



NIBI

Milliken™

Reconciliation through Design | *Modified Standard*

Nibi

(nih • beh)
Water

Indigenous Resilience and Design

Introducing Nibi, a Reconciliation Through Design collection, honoring Indigenous culture, history, and design. Drawing its namesake from the Anishinaabemowin word for 'water,' Nibi embodies a spirit of resilience, renewal and restoration. Designed by First Nation interior designer, Destiny Seymour, this collection represents an inclusive movement to protect our water sources across Turtle Island among Indigenous nations. After visiting a local museum showcasing ancient Indigenous ceramics and bone tools, Seymour drew inspiration from the intricate patterns, reinterpreting the markings to craft her own unique design. Featuring five patterns and six colors, this collection is a manifestation of handmade history.



Scan to watch
the video.



Meet the Designer



Destiny Seymour

Destiny Seymour is an Anishinaabe interior designer based in Winnipeg, Manitoba. She graduated with her master's degree in Interior Design from the Faculty of Architecture at the University of Manitoba. She worked at a local architecture firm in Winnipeg for over 10 years as their interior designer before starting her own design business in 2016.

Destiny started designing artisan textiles for interiors that respectfully reflects local Manitoban Indigenous peoples and their history after struggling to find materials that she could incorporate into design projects. Her company, Indigo Arrows, now offers a range of table linens, pillows, and blankets that showcase patterns from local Indigenous pottery and bone tools that date from 400 to over 3000 years old.



Designs that Spark Conversation

Indigenous nations are diverse in their cultures and histories. Pulling from shared sentiments, such as deep respect for the earth and reveling in its natural beauty, these themes shape this collection. Colorways paint a picture from the designer’s childhood spent outdoors: the bright yellow of a sunset, striking green foliage of surrounding trees, and deep rust of riverbank clay. Additionally, the collection’s low minimum for custom orders—100 yards—and color customization options provide flexibility.

Wiikonge

(wee ▪ kong ▪ eh)
To invite to feast



Stone WIK204-180



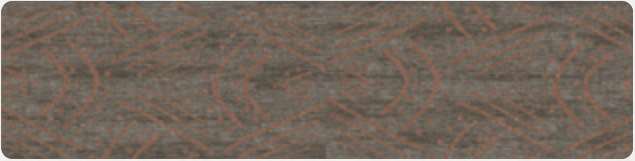
Moss WIK87-234



Ochre WIK105-235



Copper WIK128-118



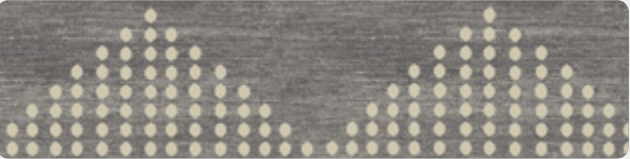
Bark WIK128-44



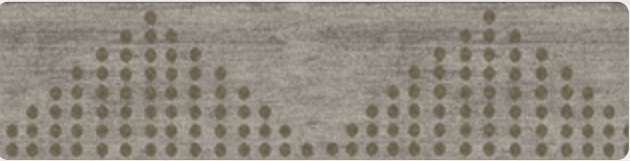
Pipestone WIK251-102

Gimiwan

(gih ▪ mih ▪ wun)
Rain



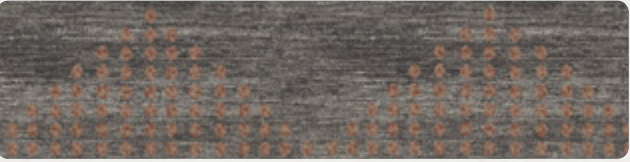
Stone GIM204-180



Moss GIM87-234



Ochre GIM105-235



Copper GIM128-118



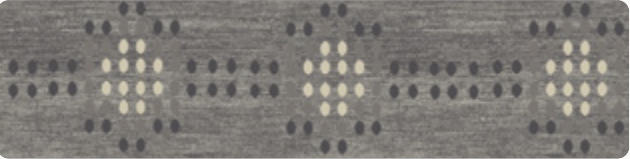
Bark GIM128-44



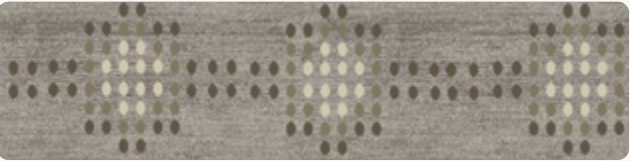
Pipestone GIM251-102

Dibiki-Giizis

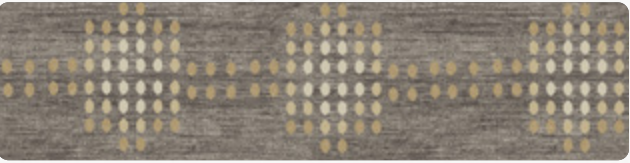
(dih ▪ bih ▪ kih - ghee ▪ zis)
Grandmother moon



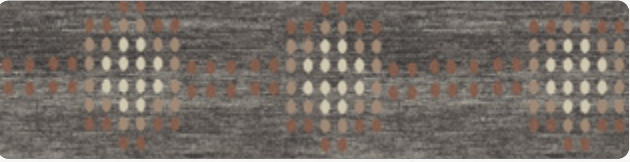
Stone DIB204-180



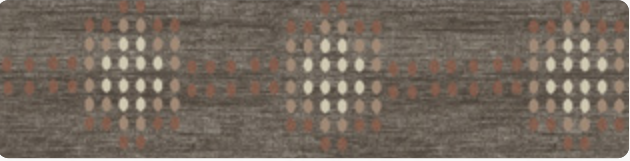
Moss DIB87-234



Ochre DIB105-235



Copper DIB128-118



Bark DIB128-44



Pipestone DIB251-102

Zoogipoon

(zoog ▪ ih ▪ pohn)
Snowing



Stone ZOG204-180



Moss ZOG87-234



Ochre ZOG105-235



Copper ZOG128-118



Bark ZOG128-44



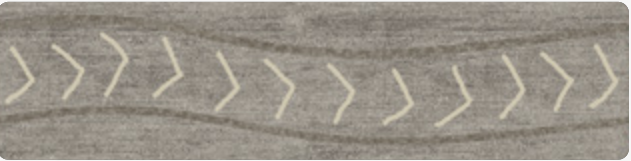
Pipestone ZOG251-102

Ziibi

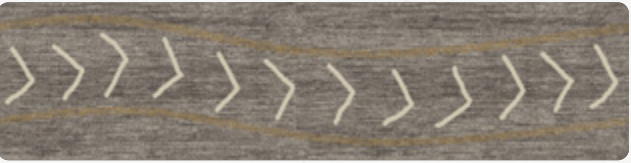
(zee ▪ beh)
River



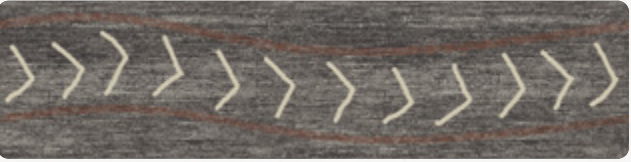
Stone ZIB204-180



Moss ZIB87-234



Ochre ZIB105-235



Copper ZIB128-118



Bark ZIB128-44



Pipestone ZIB251-102





NIBI

Wiikonge / Gimiwan / Dibiki-Giizis /
Zoogipoon / Ziibi

Construction

Tufted, Textured Loop
and Cut Pile

Plank Size

25 cm x 1 m
(9.84" x 39.4")

Yarn Type

Milliken-Certified
WearOn® Nylon

Stain Resist / Soil Release

StainSmart®

Nominal Total Thickness

0.33" (8.4 mm)

Average Density (Finished)

5,300

Standard Backing

PVC-Free WellBAC®
Comfort Cushion

Available with TractionBack®

Texture Appearance Retention Rating (TARR)

Heavy Traffic End-Use
Applications

Recommended Installation Method(s)



ASHLAR

RECONCILIATION THROUGH DESIGN

Milliken's "Reconciliation Through Design" initiative provides a platform for collaboration between Indigenous Artists and the commercial interiors industry. It also provides a platform for corporations to support First Nation arts communities through meaningful partnerships that directly benefit the artists.

SUSTAINABLE FEATURES

Nibi is manufactured with PVC-Free WellBAC® Comfort cushion backing, and is certified NSF-140 Gold. **Nibi** is also available with our NSF-140 Platinum backing option.



Declare.

M/PACT™ CARBON NEUTRAL PROGRAM

TRACTIONBACK

Simplify your modular installation with Milliken's patented TractionBack®, an innovative backing system that is faster, more cost efficient, and environmentally superior to wet adhesives and peel-and-stick carpet tile.

SHOWN ON THE COVER

(Front) Wiikonge in Pipestone WIK251-102 and Gimiwan in Pipestone GIM251-102. Ashlar. (Back) Gimiwan in Copper GIM128-118. Ashlar.

Images in this brochure and architect folder are approximate for color and pattern scale. Please use actual carpet samples to make your final selections.

Scan to explore the
collection story.



Milliken™

Customer Concierge 800.824.2246 | millikenfloors.com
© 2025 Milliken & Company | Design © Milliken & Company | Made in the USA

2710037773
CP 0225