

TERRA

Firma/ Aggregate / Terrazzo / Macrozzo

Milliken™



CONTENTS

▶ PATTERN

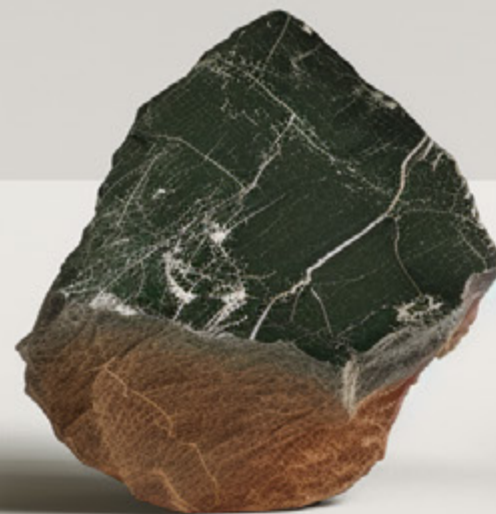
▶ COLOR DIRECTION

TERRA

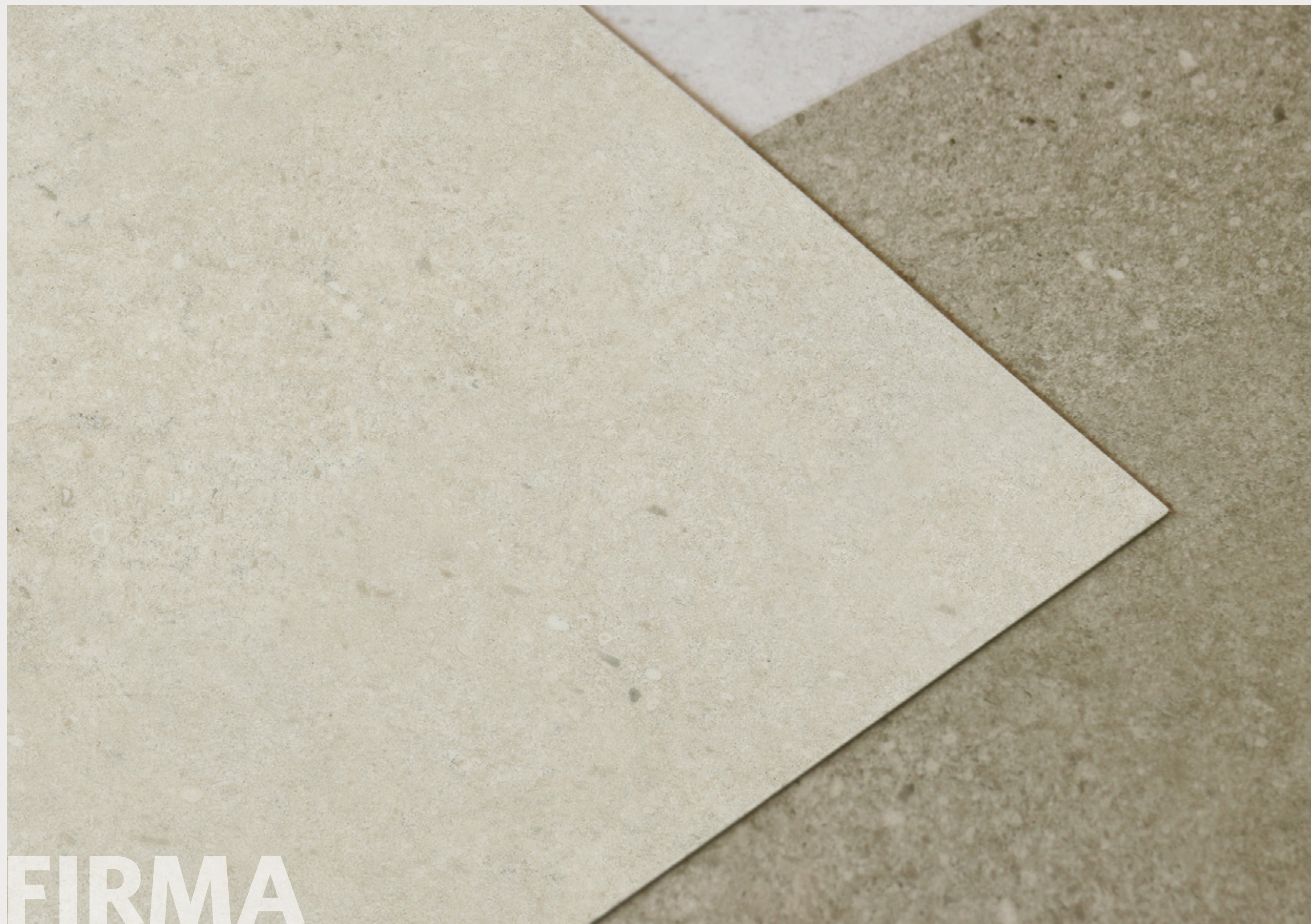
The Terra Collection explores the diverse applications of stone, presenting a range from flat, tonal surfaces to designs that accentuate the intricate grains and textures of natural materials.

With a variety of scales and contrast levels, this collection offers versatile solutions tailored to different architectural contexts.

Whether you desire the understated elegance of softer textures or the richly textured colored stones, Terra provides an array of options to elevate and personalize any space.



• Click the pattern name to explore more.



FRM22 Earth



FRM251 Clay



FRM220 Earthtone



FRM235 Fossil



FRM217 Gravel



FRM205 Ivory



FRM180 Stone



FRM209 Stoneware



FRM215 Pebble



FIRMA

Earthenware
From
Natural Clay.



Firma in Earthtone, ashlar installation

• Click the pattern name to explore more.



AGGREGATE



AGG22-220 Potter



AGG220-209 Quartz



AGG209-215 Limestone

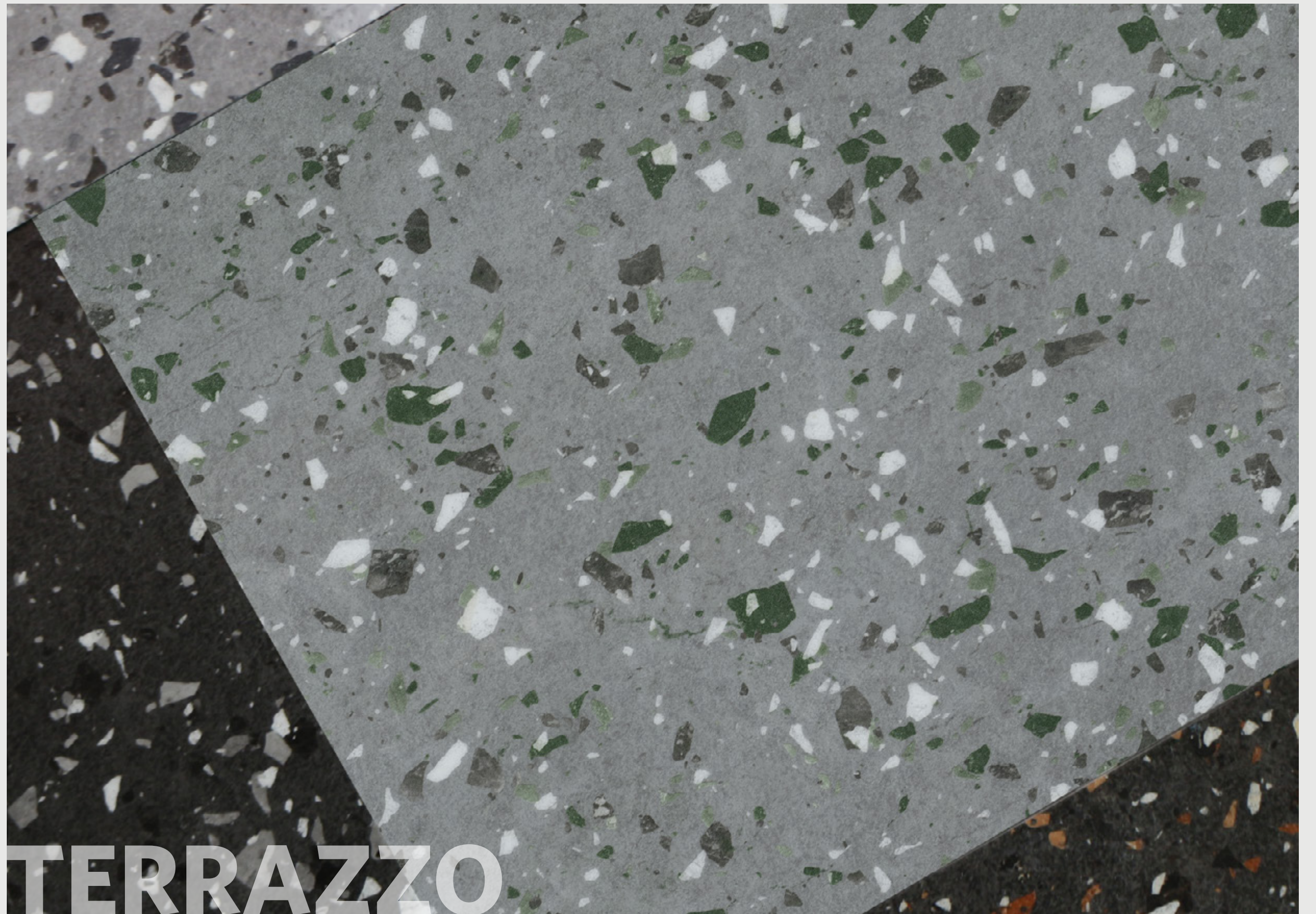
AGGREGATE

Granite
Stone
Composite.



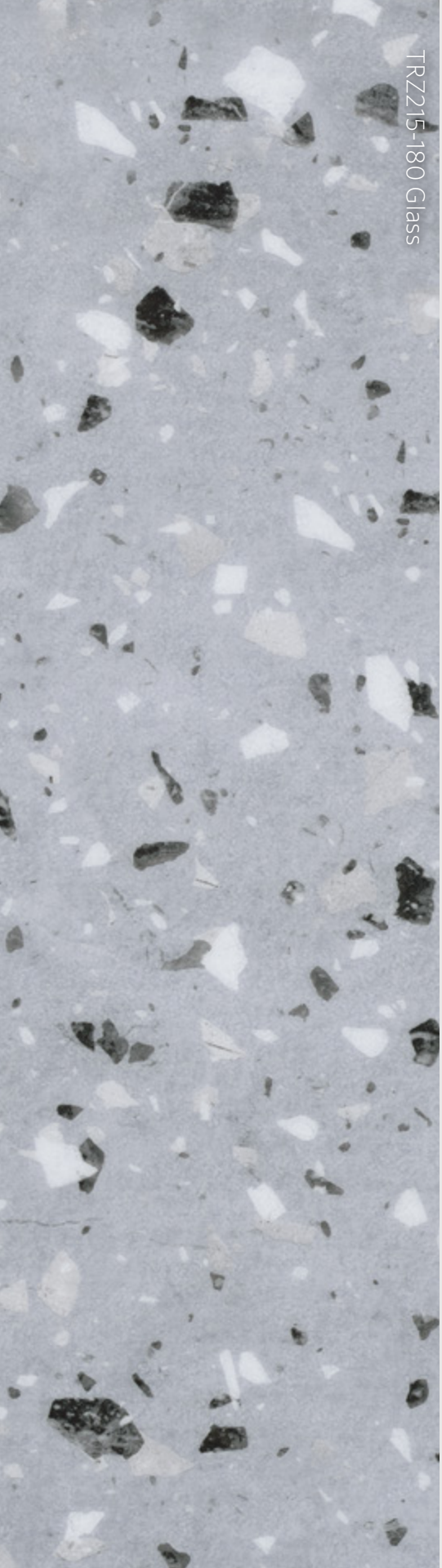
Aggregate in Potter, ashlar installation

• Click the pattern name to explore more.

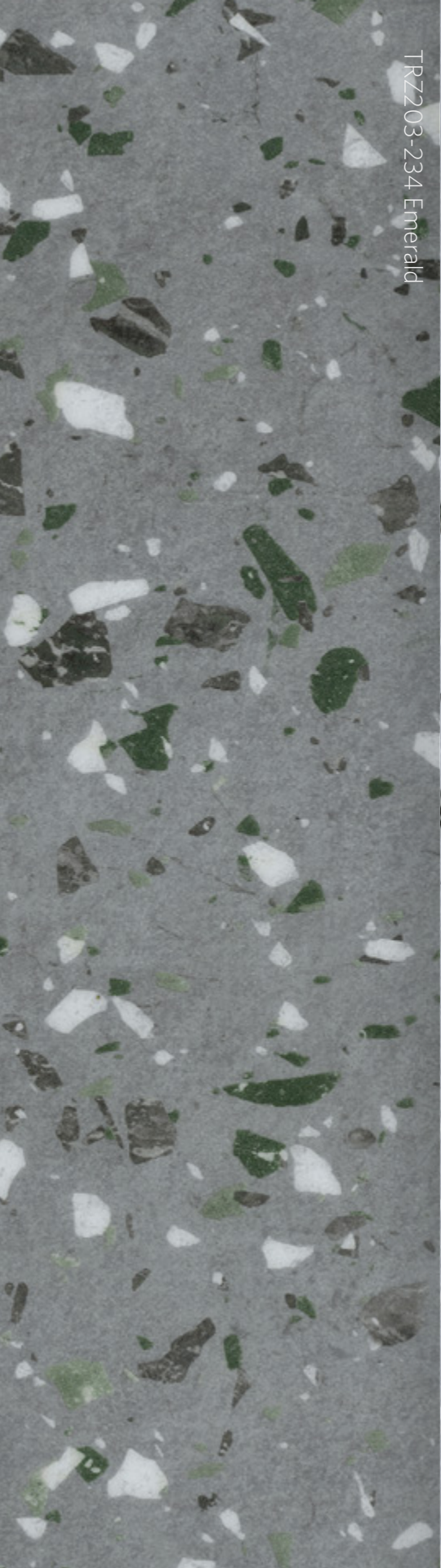


TERRAZZO

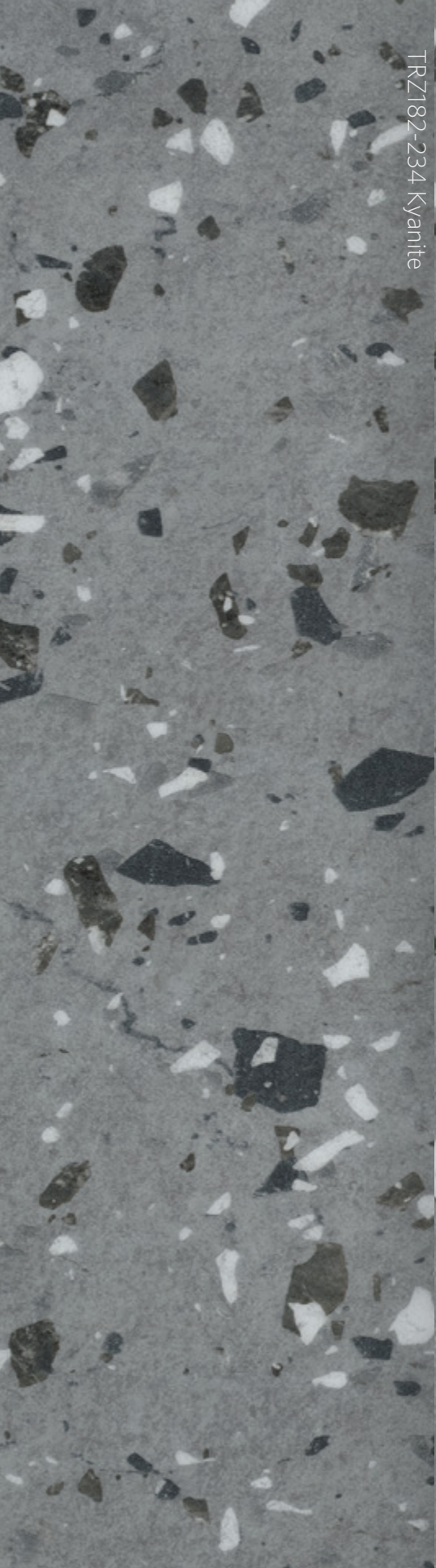
TRZ215-180 Glass



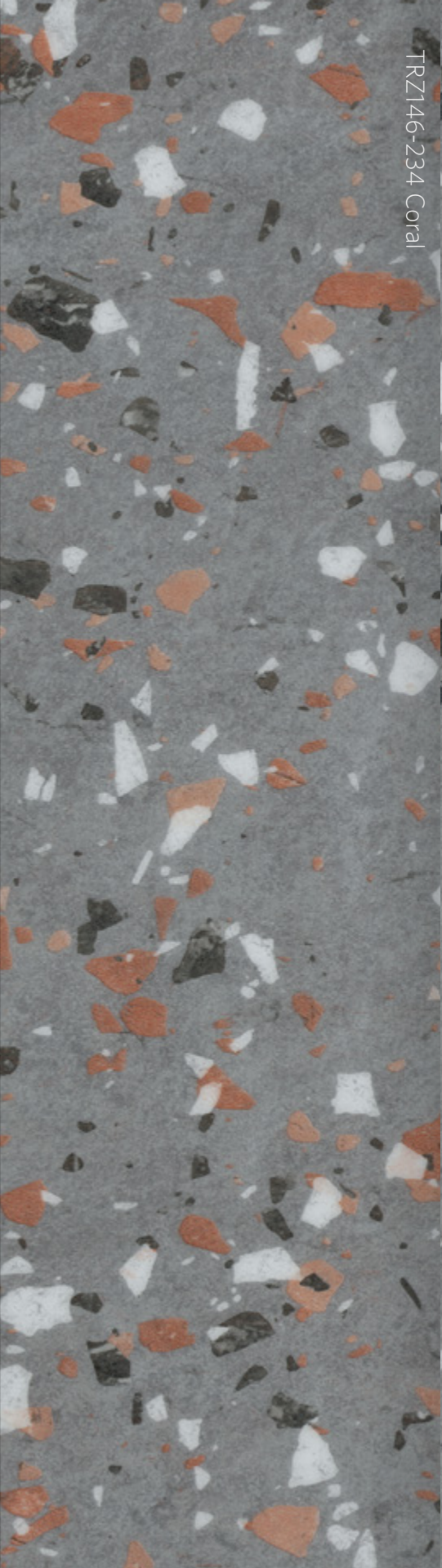
TRZ203-234 Emerald



TRZ182-234 Kyanite



TRZ146-234 Coral



TRZ33-133 Night Jazz



TRZ234-133 Night



TERRAZZO

Multi
Material
Composite.



Terrazzo in Emerald, ashlar installation

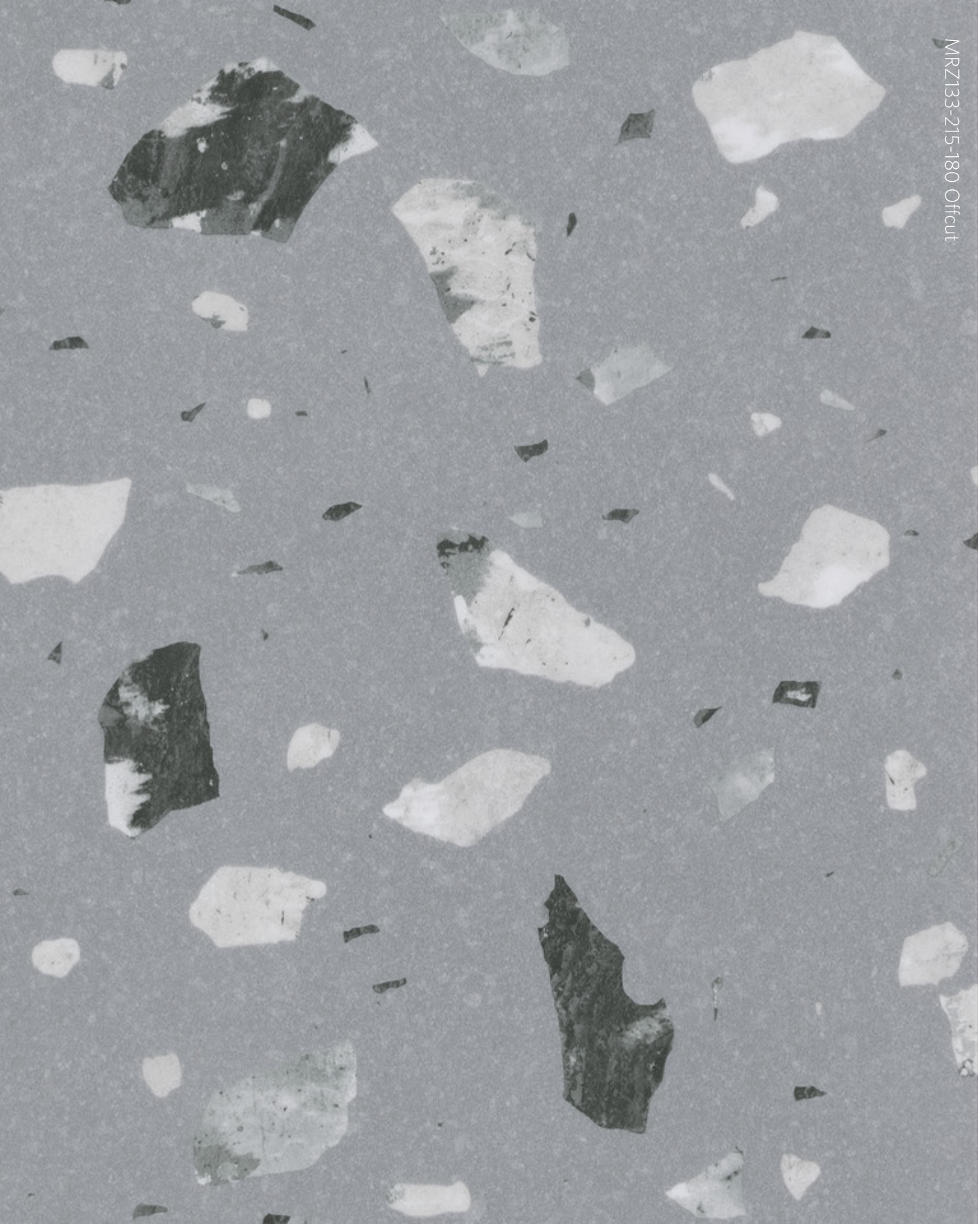
• Click the pattern name to explore more.



MACROZZO



MRZ182-33-133 Rocks



MRZ133-215-180 Offcut

MACROZZO

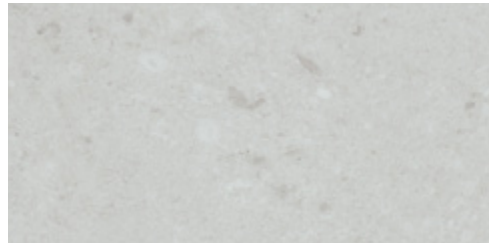
Large
Stone
Composite.



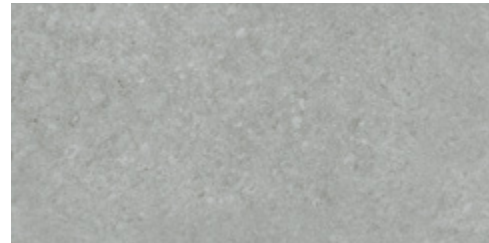
Macrozzo in Rocks, ashlar installation

COLORLINE

Firma



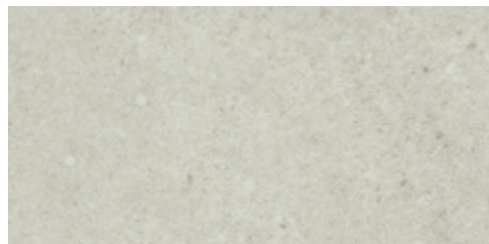
FRM215 Pebble



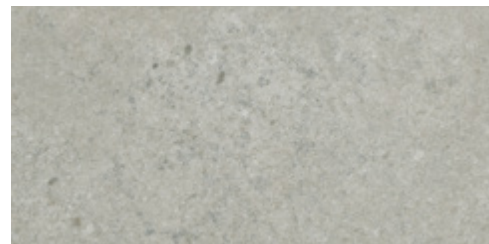
FRM209 Stoneware



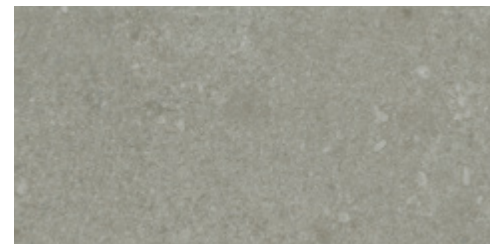
FRM180 Stone



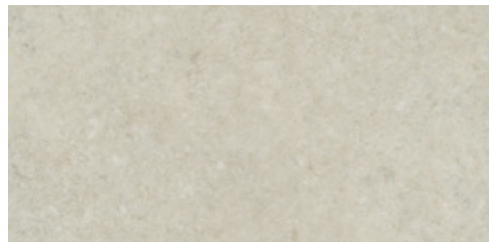
FRM205 Ivory



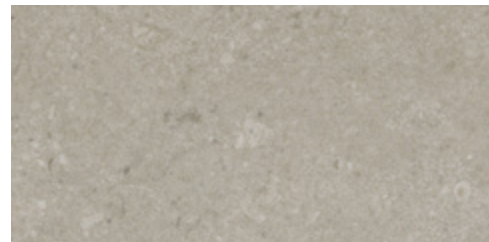
FRM217 Gravel



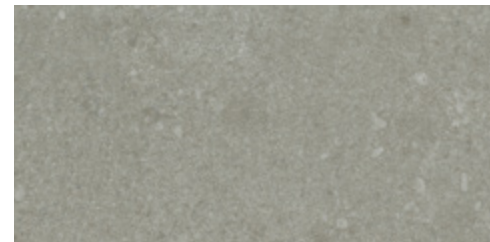
FRM235 Fossil



FRM220 Earthtone

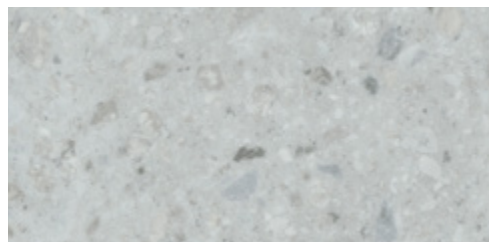


FRM251 Clay

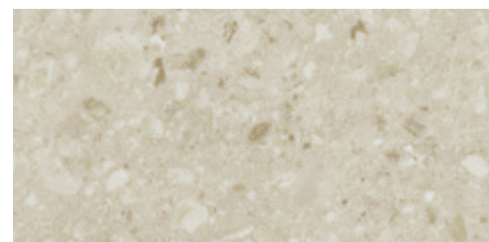


FRM22 Earth

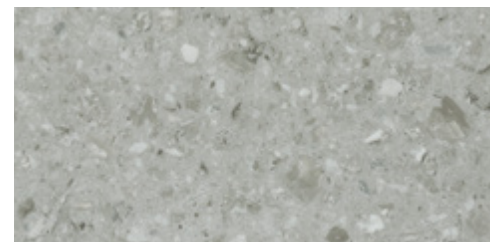
Aggregate



AGG209-215 Limestone

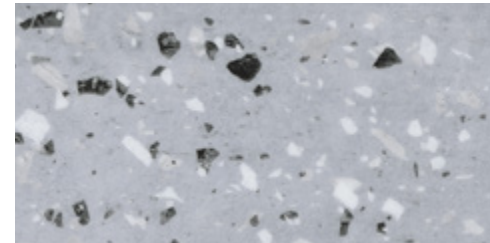


AGG22-220 Potter

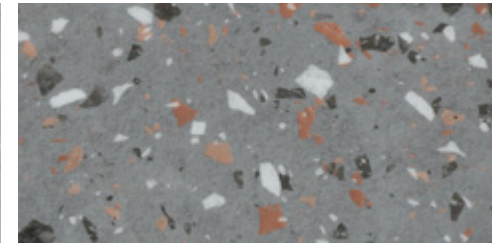


AGG220-209 Quratz

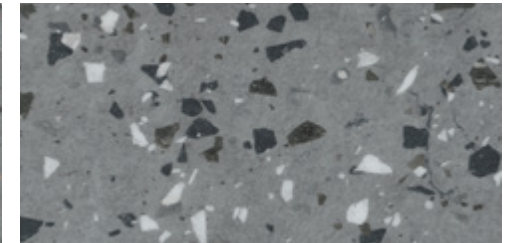
Terrazzo



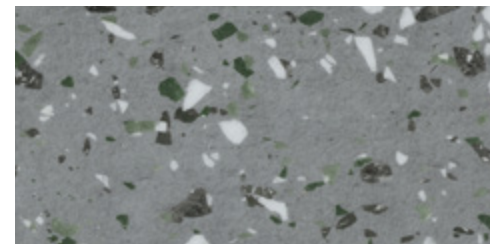
TRZ215-180 Glass



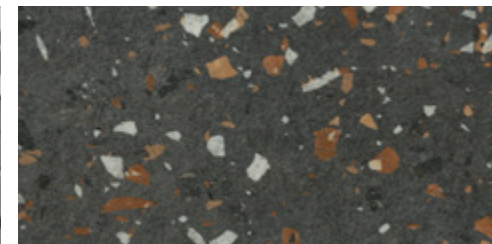
TRZ146-234 Coral



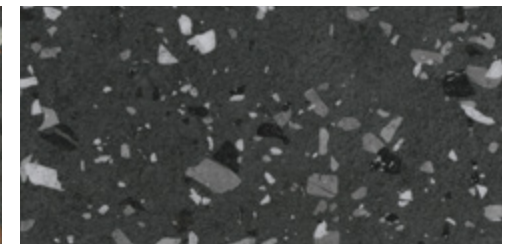
TRZ182-234 Kyanite



TRZ203-234 Emerald

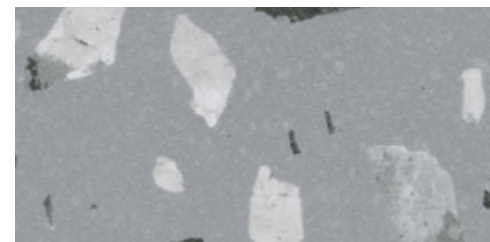


TRZ33-133 Night Jazz

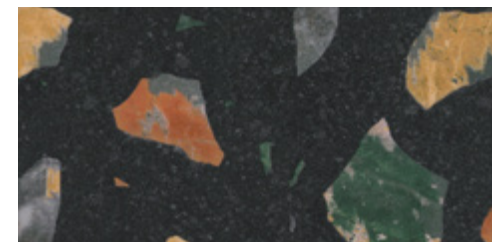


TRZ234-133 Night

Macrozzo



MRZ133-215-180 Offcut



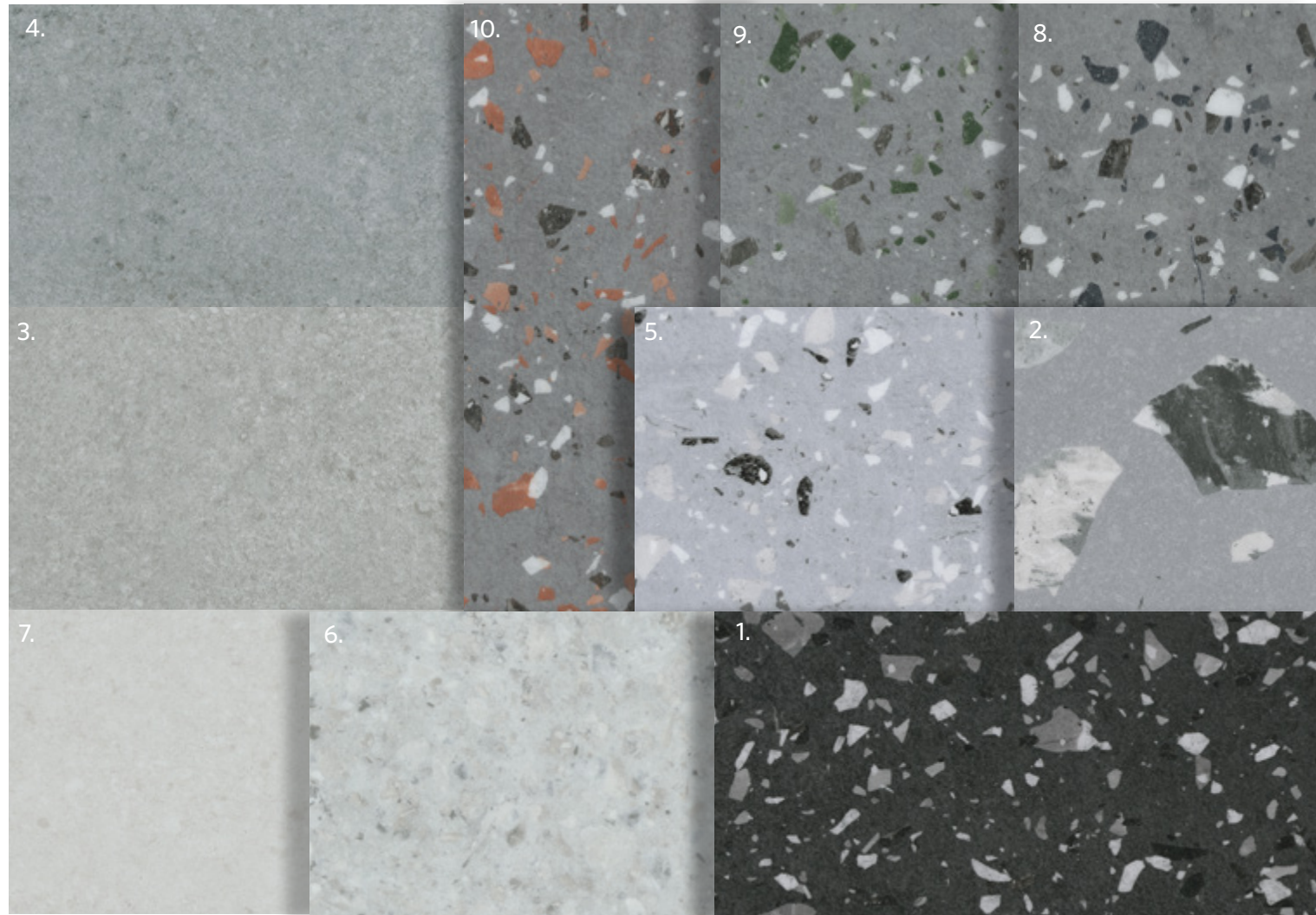
MRZ182-33-133 Rocks

GRAY -

SOPHISTICATED AND MODERN

Stones for a sleek look, capturing the rugged beauty of slate.





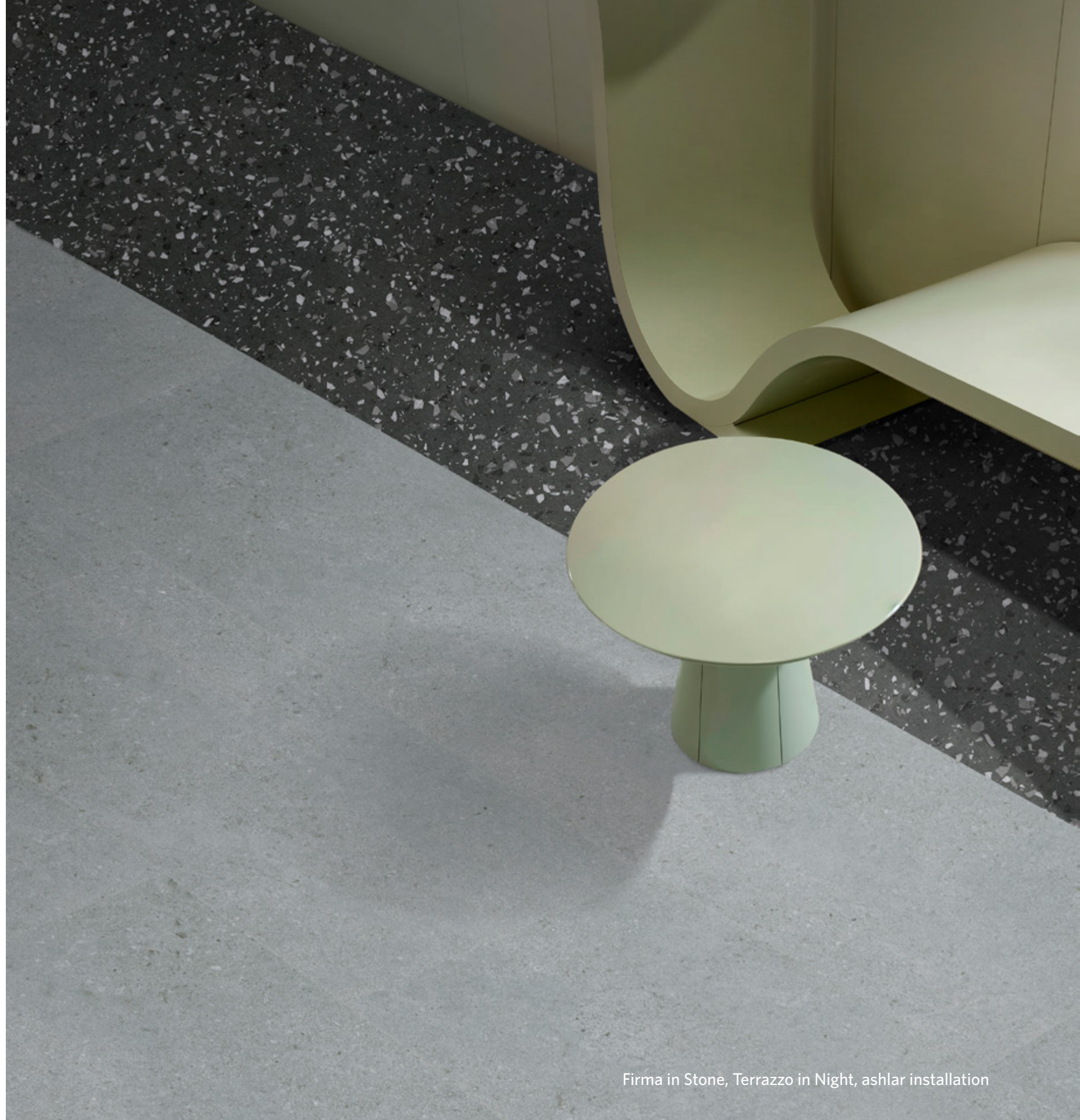
-
- | | |
|--------------------------|-------------------------|
| 1. TRZ234-133 Night | 6. AGG209-215 Limestone |
| 2. MRZ133-215-180 Offcut | 7. FRM215 Pebble |
| 3. FRM209 Stoneware | 8. TRZ182-234 Kyanite |
| 4. FRM180 Stone | 9. TRZ203-234 Emerald |
| 5. TRZ215-180 Glass | 10. TRZ146-234 Coral |



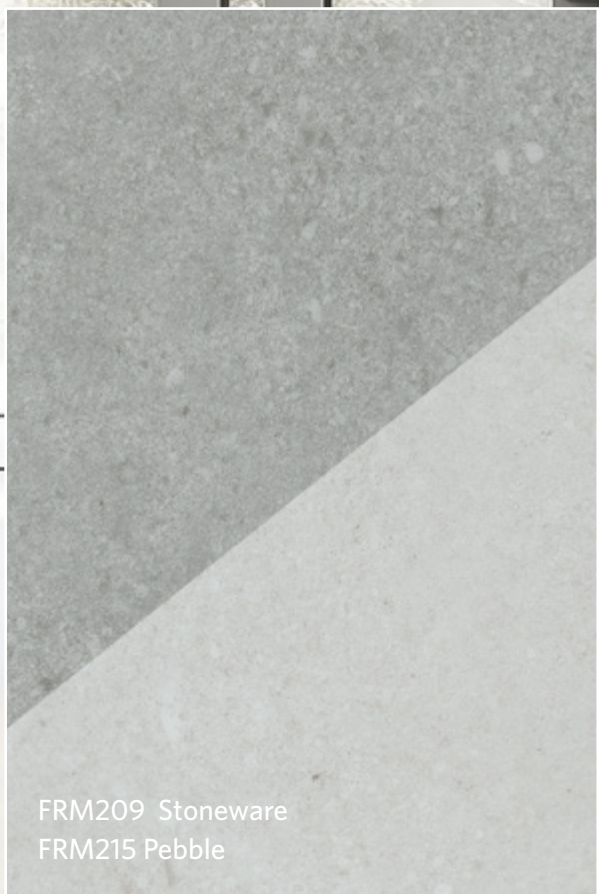
Macrozzo in Offcut, ashlar installation



Aggregate in Limestone, ashlar installation



Firma in Stone, Terrazzo in Night, ashlar installation

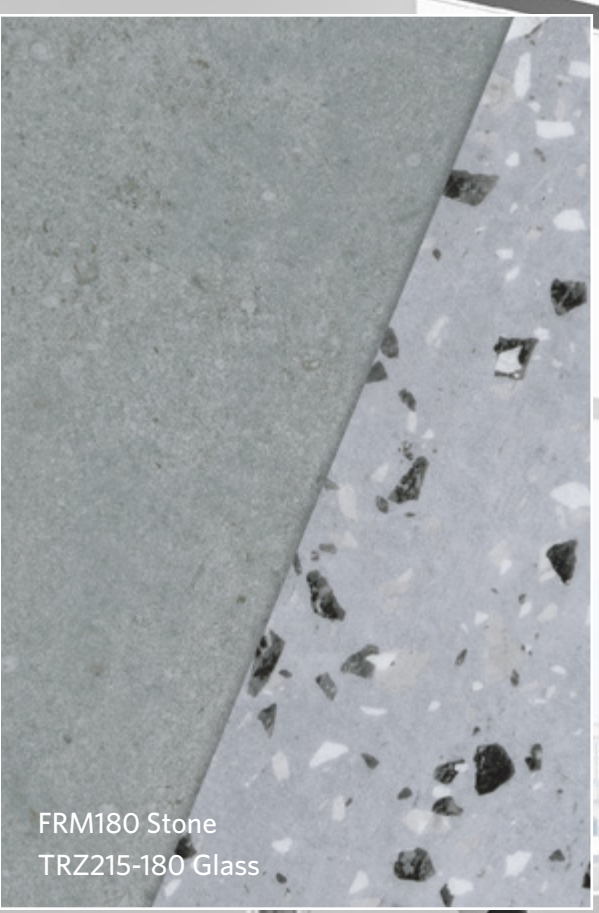


FRM209 Stoneware
FRM215 Pebble





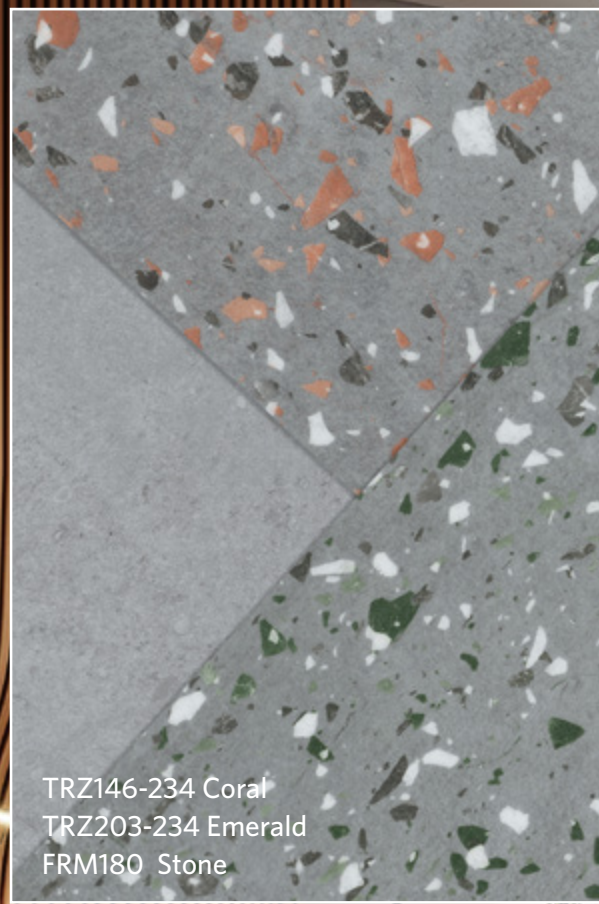
Terrazzo in Kyanite, ashlar installation



FRM180 Stone
TRZ215-180 Glass



Firma in Stone, Terrazzo in Glass, ashlar installation



TRZ146-234 Coral
TRZ203-234 Emerald
FRM180 Stone



Firma in Stone, Terrazzo in Emerald and Coral, ashlar installation



Terrazzo in Coral, ashlar installation



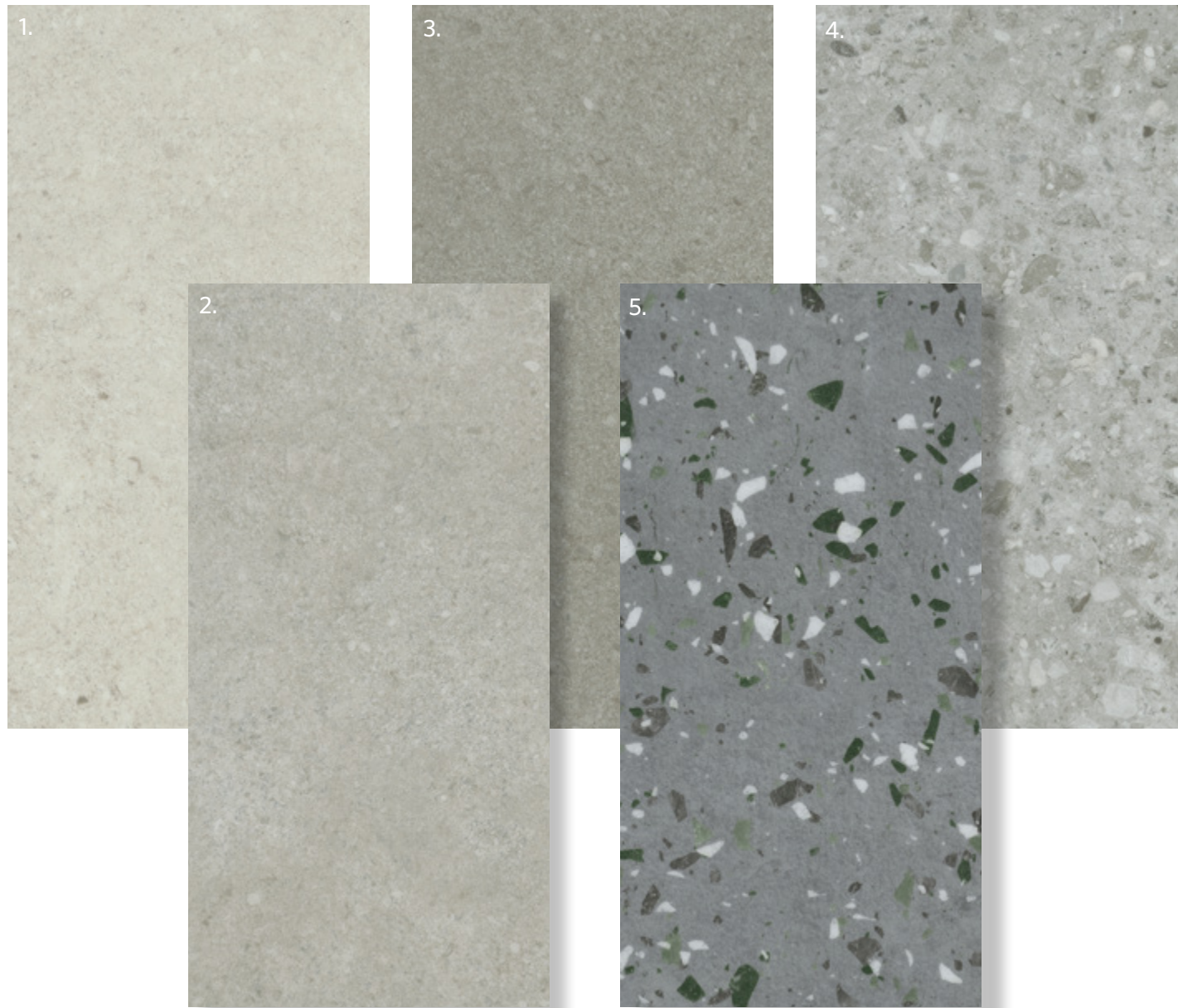
GLM261-237 Dusk Glimmer
FRM215 Pebble

(corridor)Firma in Pebble, ashlar installation. (room-Divided Glass Collection)Glimmer in Dusk Glimmer, monolithic installation

NEUTRAL -
ELEGANT
AND VERSATILE

Soft beiges and ivories, creating a serene backdrop.





-
- 1. FRM205 Ivory
 - 2. FRM217 Gravel
 - 3. FRM235 Fossil
 - 4. AGG220-209 Quratz
 - 5. TRZ203-234 Emerald



Aggregate in Quratz, ashlar installation



FOE10-254-98 Seasonal Cycle
FRM205 Ivory

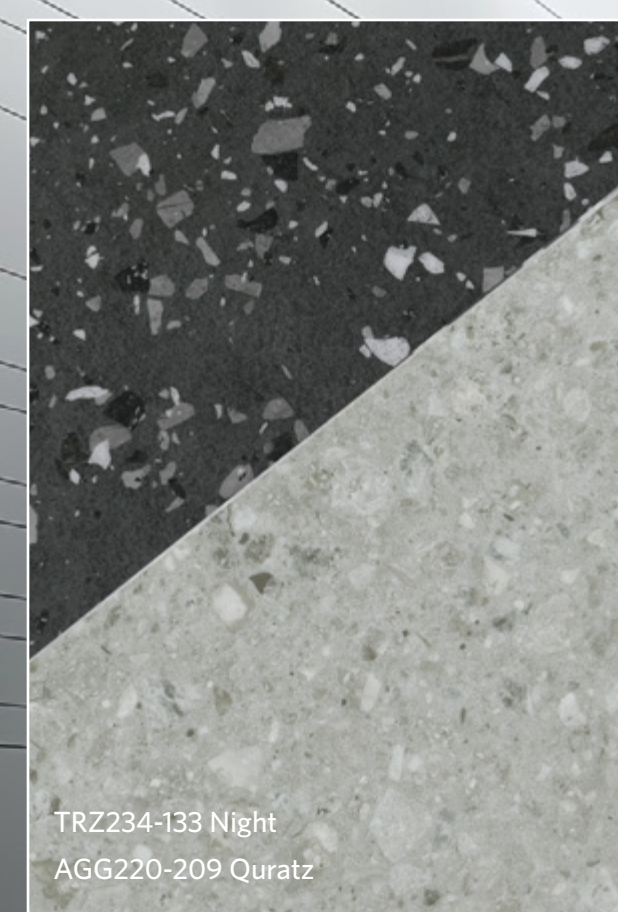


(front)Firma in Ivory, (back-Living Facades Collection)Foliage in Seasonal Cycle, ashlar installation





Firma in Gravel, ashlar installation



TRZ234-133 Night
AGG220-209 Quratz

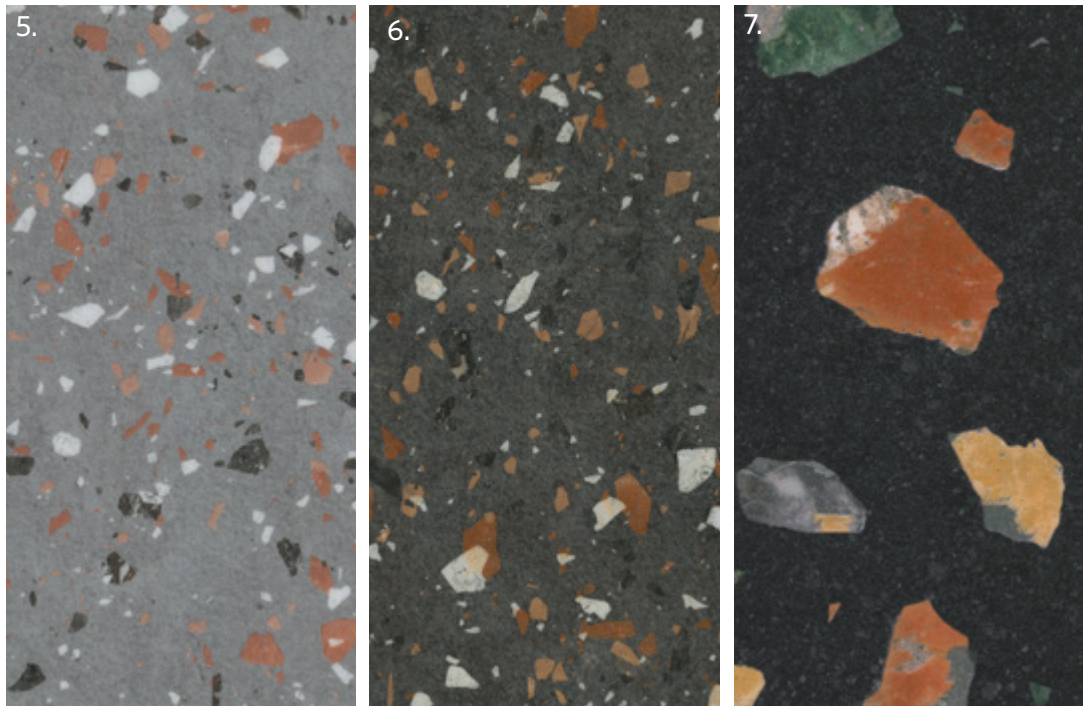
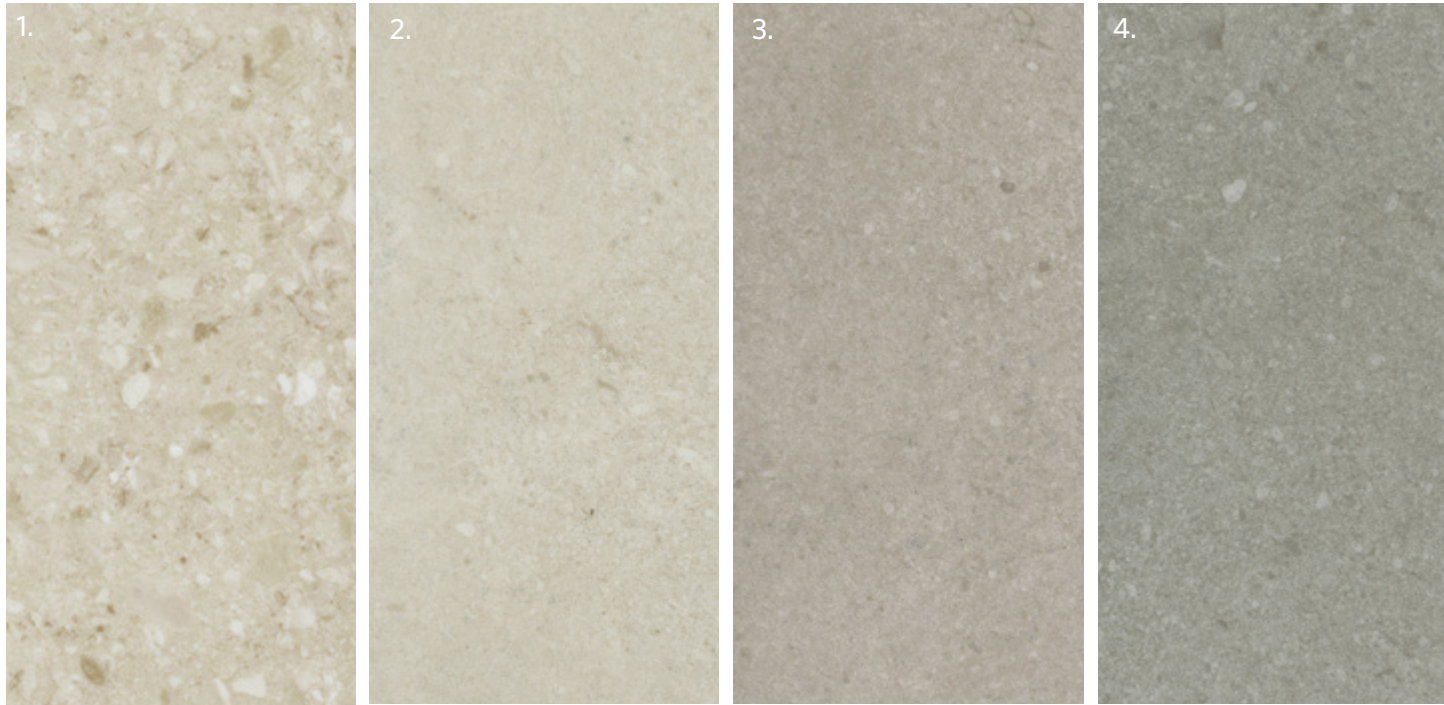


Aggregate in Quratz, Terrazzo in Night, ashlar installation



WARM -
RICH AND
INVITING

Hues of terracotta and ochre, an earthy charm to warm any space.

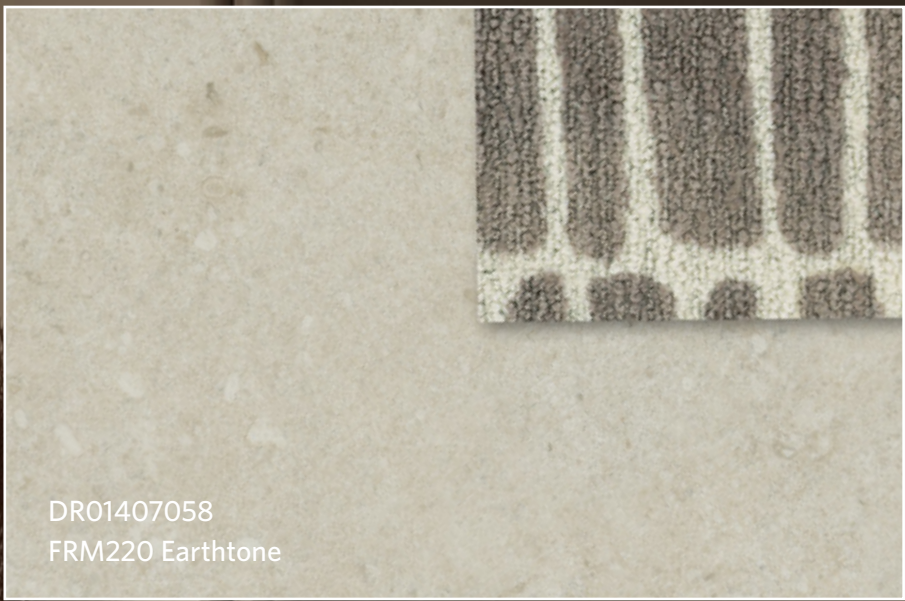


1. AGG22-220 Potter
2. FRM220 Earthtone
3. FRM251 Clay
4. FRM22 Earth

5. TRZ146-234 Coral
6. MRZ182-33-133 Rocks
7. TRZ33-133 Night Jazz



Firma in Clay, ashlar installation



DR01407058
FRM220 Earthtone

(border)Firma in Earthtone, ashlar installation. (field) DR01407058, monolithic installation



Firma in Earth, ashlar installation



(border)Firma in Clay, (field-Air Born Collection) Aeromotion in Sand, ashlar installation



(left) Terrazzo in Night Jazz, (right) Firma in Earth, ashlar installation



(left)Firma in Earthtone, ashlar installation. (right-Brushed By Tradition Collection)Layers in Beigh with Hei , monolithic installation



Terrazzo in Night Jazz, ashlar installation

The background of the entire page is a photograph of a modern architectural courtyard. It features several large, rectangular stone pillars of varying heights. From the top of these pillars, various green plants, including ferns and palm-like plants, are growing. The ground is a light-colored, speckled concrete or stone. The overall aesthetic is clean, modern, and eco-friendly.

M/PACT™

CARBON NEUTRAL PROGRAM

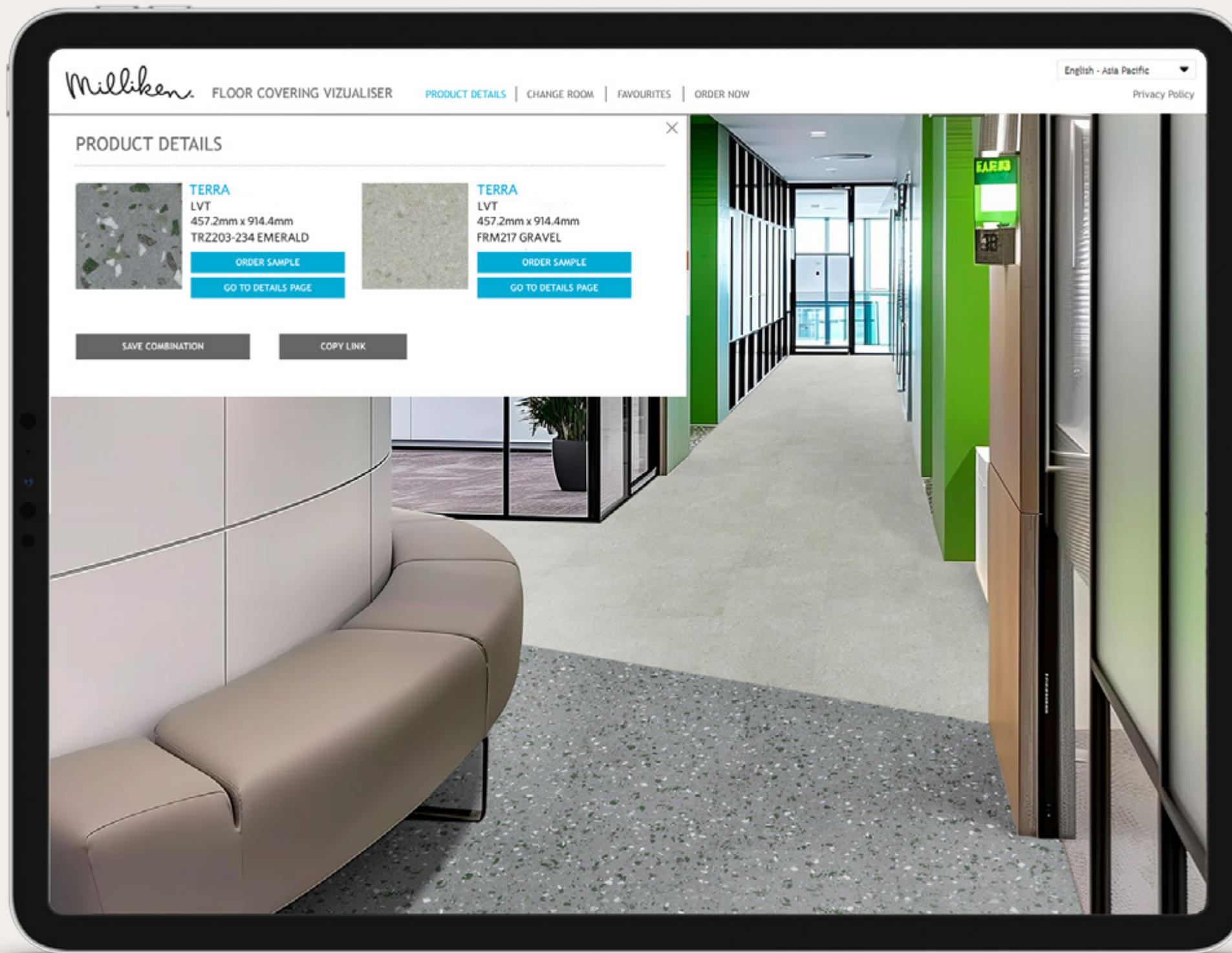
TERRA IS A CARBON NEUTRAL COLLECTION

Climate change is one of the greatest threats facing humanity. Today, our carpet, LVT and entryway tiles are carbon neutral everywhere in the world. We invite you to learn more about the significant changes we've made, then let's work together to design a better future.

[LEARN MORE ►](#)

VIEW TERRA IN YOUR SPACE

Use the online visualiser to view different layouts of Terra.
Simply upload a photograph of your space and let the
visualiser do the rest.





Firma in Clay, ashlar installation

Milliken

www.millikenfloors.com

TERRA FLEXFORM™ LVT

Construction

High Performance Flexform™ LVT

Finish

ProGuard™ Reinforced Polyurethane Coating

Overall Thickness

5mm

Wear Layer Thickness

0.55mm

Edge Profile

Micro Bevel

Tile Sizes

18" x 36" / 457.2mm x 914.4mm

Pieces Per Box

6

Weight Per Box

24.52kg

Quantity Per Box

2.51 m²

Critical Radiant Flux (ISO 9239-1)

≥ 4.5kW/m²

Smoke Rate(ISO 9239-1)

<750%.min

Use Classification (ISO 10582)

Class 33 Heavy Commercial

Colour Fastness to Light (ISO 105-B02)

≥ 6

Slip Resistance (DIN 51130)

R10

Dimensional Stability (ISO 23999)

≤ 0.25 % ; Curl ≤ 2mm

Resistance to Chemicals (ASTM F925)

Pass

Residual Indentation (ISO 24343-1)

≤ 0.1mm

Castor Chair Resistance (ISO 4918)

Pass

Flexibility(ISO 24344)

Pass

Warranties

15-Year Limited Commercial Wear

产品结构

高性能弹性地板

表层工艺

ProGuard™ 增强聚氨酯涂层

总厚度

5mm

耐磨层厚度

0.55mm

倒角类型

微倒角

单片尺寸

18" x 36" / 457.2mm x 914.4mm

每箱片数

6 片

每箱重量

24.52kg

每箱数量

2.51 m²

临界辐射通量 (阻燃性) (ISO 9239-1)

≥ 4.5kW/m²

产烟量 (ISO 9239-1)

<750%.min

应用分级 (ISO 10582)

商业重度 33 级

光照色牢度 (ISO 105-B02)

≥ 6

防滑性能 (DIN 51130)

R10

加热尺寸稳定性及翘曲 (ISO 23999)

≤ 0.25 % ; 翘曲 ≤ 2mm

耐化学性能 (ASTM F925)

通过

残余凹陷 (ISO 24343-1)

≤ 0.1mm

脚轮椅测试 (ISO 4918)

通过

柔韧性 (ISO 24344)

通过

质保

15 年商用耐磨层有限质保

LVT ENVIRONMENTAL STANDARDS

Milliken LVT is highly durable resilient flooring engineered with the highest quality raw materials to provide unsurpassed performance and enduring aesthetics. Milliken LVT is 100% ortho-phthalate-free. Milliken LVT is manufactured at facilities that are ISO 9001 and ISO 14001 compliant.



Declare.



Specifications are subject to normal manufacturing tolerances and may be changed without prior notice. Images in this brochure are approximate for color and pattern scale. Please use actual product samples to make your final selections.