



PĀ HARAKEKE

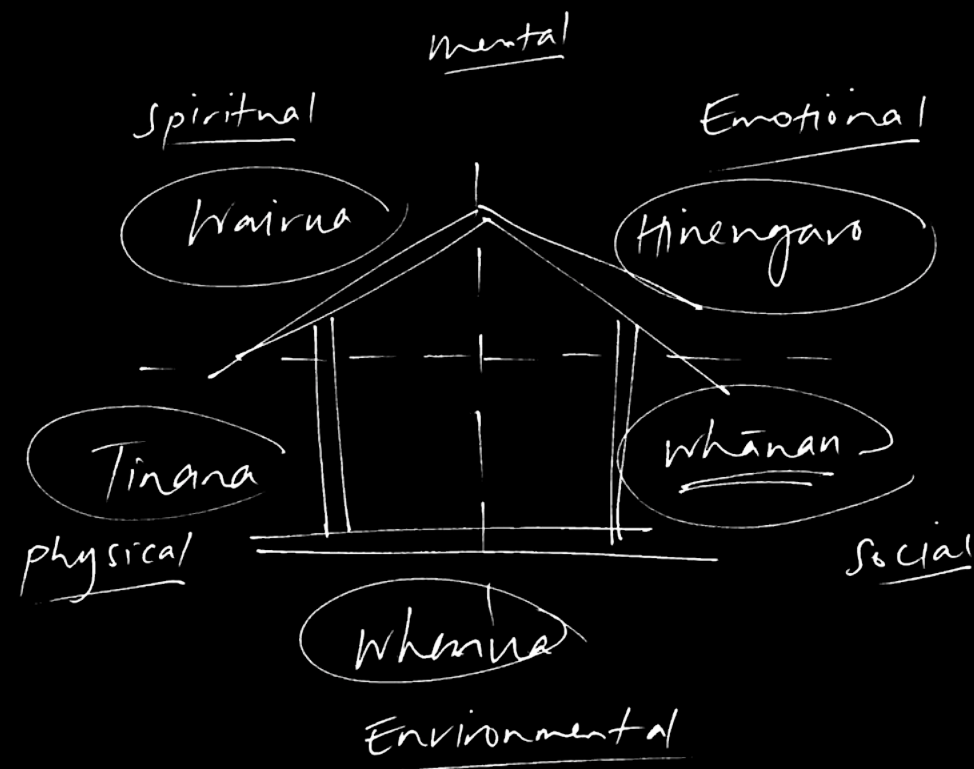
Milliken™



*“To achieve balance within oneself, one must
be intimately familiar with one’s identity.
Knowing who you are and where you stand
in the world informs optimum physical,
mental, and spiritual wellness.”*

*Arnya Karaitiana
Rangitāne, Ngāti Ranginui, Te Arawa
Creative Director & Kaiārahi Māori*





Te Whare Tapa Whā - Well-being Model by Tā Mason Durie

"When the layers of our existence - our whakapapa - are balanced, we are well.

When the those who stand beside us - our whānau - are present, we are well.

When the lines from generation to generation are open and connected, we are well.

When we're comfortable with who we are and where we stand in the world, we are well.

Understanding all of this is grounding... being grounded is achieving balance... and balance is well-being."

Arnya Karaitiana, Rangitāne, Ngāti Ranginui, Te Arawa | Creative Director & Kaiārahi Māori

Well - wellness - balance
Being - human - being present

Pā Harakeke

The Pā Harakeke Collection is inspired by the journey of artist Arnya Karaitiana in celebrating identity, while achieving balance and overall well-being.

The collection presents a sense of lineage and connection, symbolic of our connections to one another and to our environment. Lines inform strong bonds, a firm hold from one thing to another, while creating pathways where knowledge and information can transcend and be shared.

The collection explores the natural form, anatomy and physical expression of the Harakeke plant unique to Aotearoa, New Zealand - a metaphorical understanding of family from a Te Ao Māori perspective.

"Pā Harakeke brings to life the lines we live by and the lines that connect us. A woven universe intermittently communicating to each other consciously and unconsciously."

It features seven intricate designs that merge to form a unified visual story or stand independently as unique elements, providing an impactful presence on the floor and within any indoor environment. Each design honours the cultural importance of the Harakeke plant while incorporating contemporary aesthetics, making them ideal for modern spaces.



The Harakeke plant

In its natural state, the Harakeke is a herbaceous plant, characterised by its soft, non-woody form. Its strong, sword-like leaves are arranged side by side in two adjacent sets, enveloping the central growing point, or 'Rito'. These leaves appear intermittently woven in a fan-like pattern.



In Te Ao Māori (The Māori World), the Pā Harakeke (flax family) serves as a metaphor for whānau (family). This generational model, with its multiple layers of support, symbolises interconnectedness. At the heart of the Pā (bush) is the 'Rito', the central shoot, representing a child. The two flax blades directly beside the 'Rito' are the parents, known as 'Āwhi Rito'. The outer shoots are the 'Tipuna' or grandparents, who provide strength and protection for the younger, more delicate flax leaves.

Deep within the long flax strands of the Pā Harakeke are even smaller muka fibres. These fibres intertwine the already slender strands, collectively holding the lifelines together as one unit.

About Arnya

“Those connections are life lines, a woven universe intermittently communicating to each other consciously and unconsciously. The lines we live by bring us into the present, they physically, mentally and spiritually connect us to our surroundings and maintain a strong bond throughout our lives.”

Arnya Karaitiana
Rangitāne, Ngāti Ranginui, Te Arawa
Creative Director & Kaiārahi Māori

Arnya Karaitiana born in Hastings, Aotearoa, New Zealand is of Māori decent – Rangitāne, Ngāti Ranginui, Te Arawa. She shares her unique indigenous perspective from her Te Ao Māori view of the world, through an expression of connection, exploring the relationships between people and place.

Arnya brings profound expertise from over 15 years in the arts, design, and advertising sectors. Her fervour lies in purposeful design, craftsmanship, and storytelling, all aimed at creating experiences that resonate deeply and foster positive change.

She focuses on her sense of connection, strength and resilience that a strong whānau (family) foundation presents, while acknowledging the many generations (multiple lines) past, present and future – that shapes her journey.

“Knowing your identity is knowing your whānau (family), your whakapapa (heritage) while maintaining the connections between body, mind, and spirit.”

With a young whānau of her own, she pursues daily well-being by integrating creative practices and perspectives rooted in indigenous traditions, all while gently respecting the environment that sustains us.



Harakeke - Flax

Harakeke stands as a vibrant metaphor for whānau (family) through the lens of Te Ao Māori, encapsulating the essence of a true taonga (precious object) in our world. This dynamic motif delves into the natural elegance and fibrous intricacies of the herbaceous plant, making it an ideal choice for evoking cultural depth and aesthetic beauty in any space.

Its generational expression unveils multiple layers of support, accentuating the flowing lines where knowledge is shared and exchanged.

As a central design, this pattern forms the inspirational cornerstone of the entire collection, offering a richly textured and meaningful design element for any interior environment, harmoniously complemented by subtle patterns from the collection.





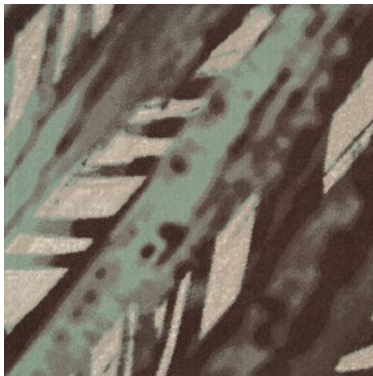
HAR153-133
STONE GREY



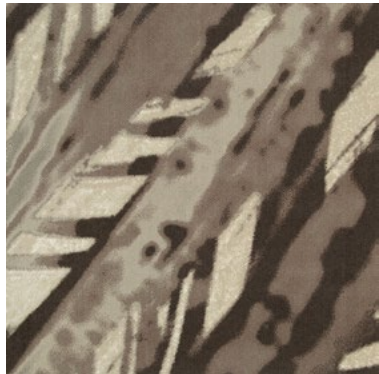
HAR42
FLAX GREEN



HAR144-6
WHITE CLAY



HAR43-40
WETLAND GREEN



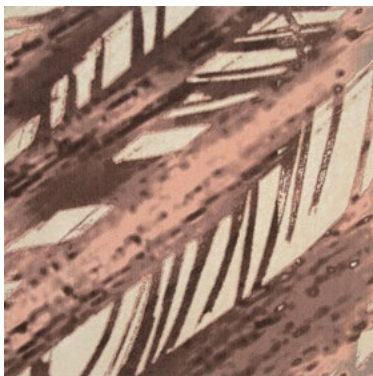
HAR217-59
BROWN FIBRE



HAR102
AUBURN HEMATITE



HAR212-120
LINSEED TWINE



HAR262-143
SOFT BLUSH



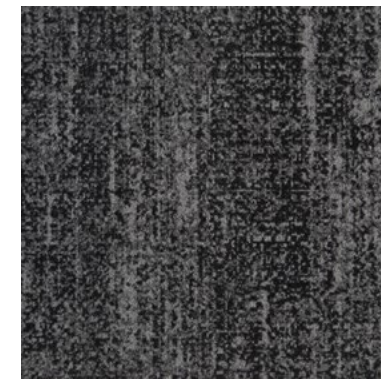
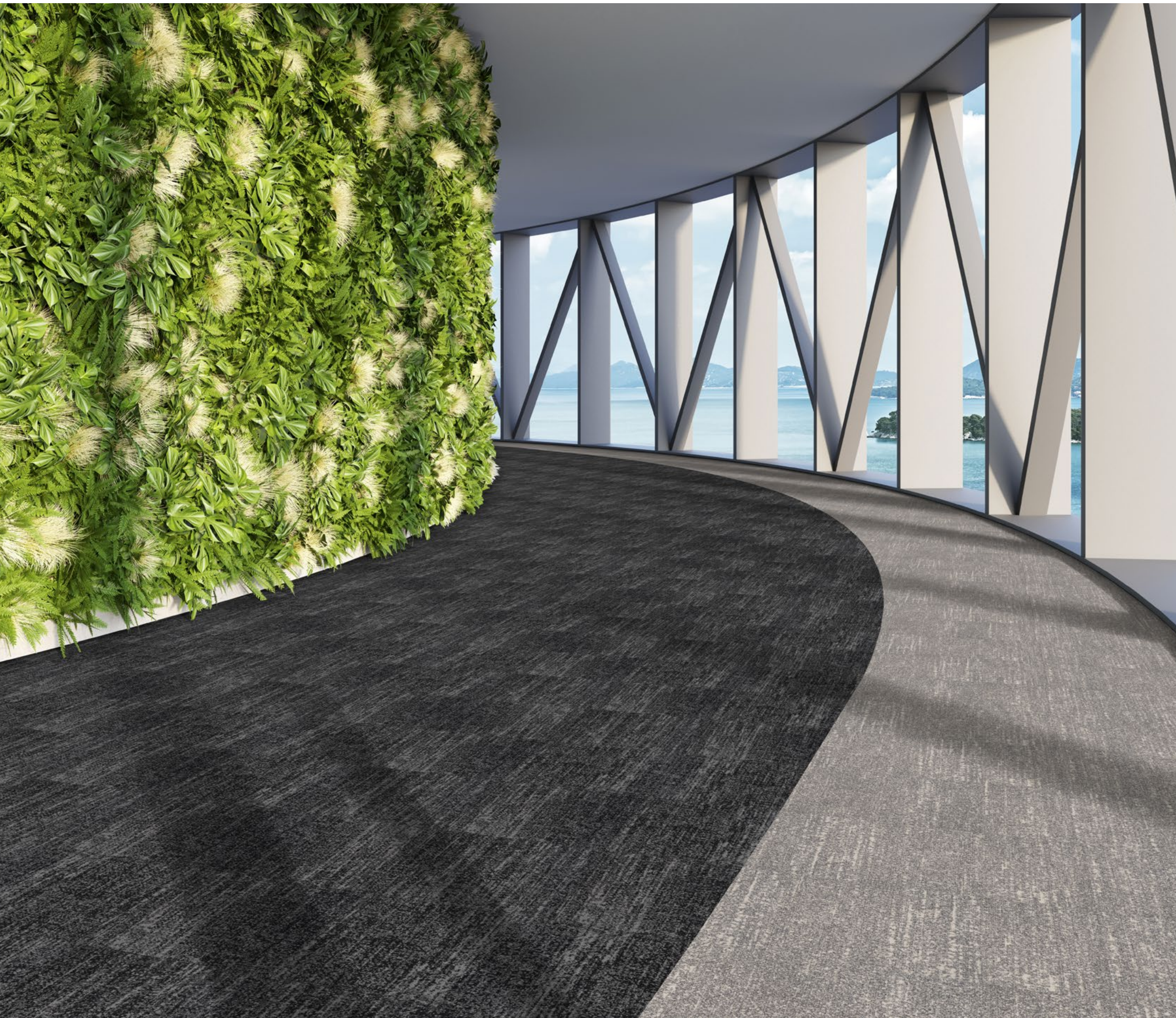
Harakeke in Flax Green | HAR42 | Monolithic Installation

Te Kākano - The Seed

Inspired by the delicate interplay of fine lines and the granular texture of Harakeke seeds, as often scattered by the native New Zealand bird, the Tūī, interior designers can craft spaces that not only delight the eye but also evoke a sense of tranquility and a profound connection to nature.

This meticulously designed pattern, laden with intricate details and a textured surface, emblematises growth and renewal, infusing interiors with a unique and meaningful essence. It deepens one's bond with the natural world, enhancing the overall harmony and serenity of space.





TEK153-133
STONE GREY



TEK42
FLAX GREEN



TEK144-6
WHITE CLAY



TEK43-40
WETLAND GREEN



TEK217-59
BROWN FIBRE



TEK102
AUBURN HEMATITE



TEK212-120
LINSEED TWINE



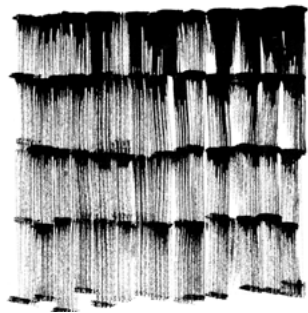
TEK262-143
SOFT BLUSH



Pakiaka - The Root

The texture of the Pakiaka pattern mirrors a profound connection to the land, evoking a sense of natural growth. The lines within the design symbolise pathways that parallel the organic process of seeds embedding themselves in the earth. This imagery invites a visual exploration, allowing one to envision the emerging roots of the Harakeke, a native New Zealand flax.

More than mere decoration, this linear pattern conveys a profound narrative of life, continuity, and generational heritage. It embodies layered tonal qualities and symbolises nature's resilience and persistence. The design fosters an earthy and dynamic ambiance, making it ideal for spaces that emphasise growth, continuity, and interconnectedness.





PAK153-133
STONE GREY



PAK42
FLAX GREEN



PAK144-6
WHITE CLAY



PAK43-40
WETLAND GREEN



PAK217-59
BROWN FIBRE



PAK102
AUBURN HEMATITE



PAK212-120
LINSEED TWINE



PAK262-143
SOFT BLUSH



Walkway: Pakiaka - The Root in Linseed Twine | PAK212-120 | Monolithic Installation
Inserts: Pakiaka - The Root in Soft Blush | PAK262-143 | Monolithic Installation

Muka - The Fibre

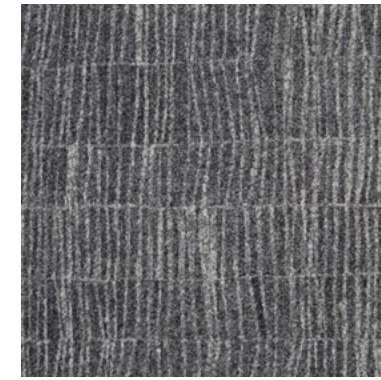
The long, string-like fibres known as 'muka' found within each leaf of the Harakeke, serve as the inspiration for the Muka design.

This design features horizontal lines that symbolise the continuity between generations—past, present, and future. It emphasises connection, making it a striking addition to any floorscape. Its aesthetic appeal, combined with its healing properties, makes it an ideal enhancement for spaces that value beauty and well-being.





Muka - The Fibre in Brown Fibre | MUK217-59 | Brick (Horizontal) Installation



MUK153-133
STONE GREY



MUK42
FLAX GREEN



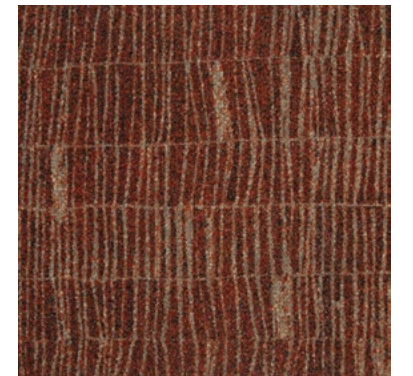
MUK144-6
WHITE CLAY



MUK43-40
WETLAND GREEN



MUK217-59
BROWN FIBRE



MUK102
AUBURN HEMATITE



MUK212-120
LINSEED TWINE

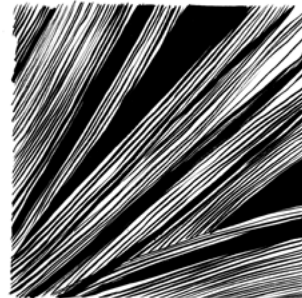


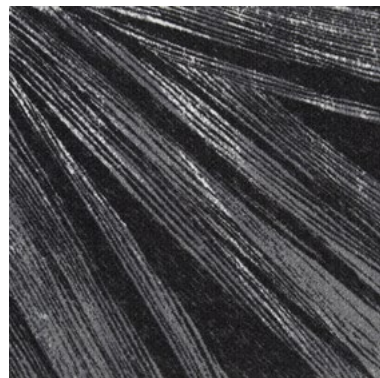
MUK262-143
SOFT BLUSH

Te Rau - The Leaf

The Te Rau pattern elegantly showcases the intricate textures of the elongated, sword-like leaves of the Harakeke plant. Each leaf reveals a rich tapestry of details, emphasising the interplay between strong, bold lines and delicate, slender ones. These lines converge into a fan-like arrangement, with each leaf intricately woven into the next, creating a profound sense of depth and complexity.

This fan-like formation symbolises generational tiers, family connections, and bloodlines, with each leaf representing a multitude of intergenerational ties. The pattern speaks to the enduring connections that bind families across time, making it a resonant and meaningful addition to any interior space.

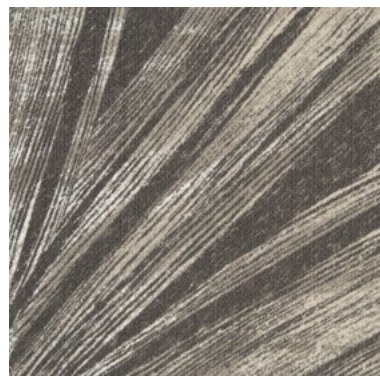




TER153-133
STONE GREY



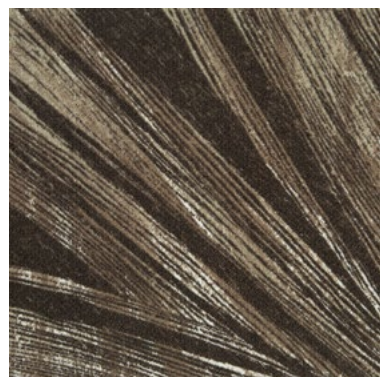
TER42
FLAX GREEN



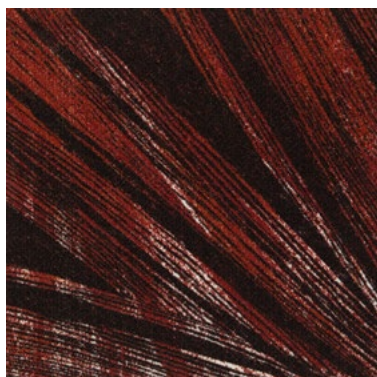
TER144-6
WHITE CLAY



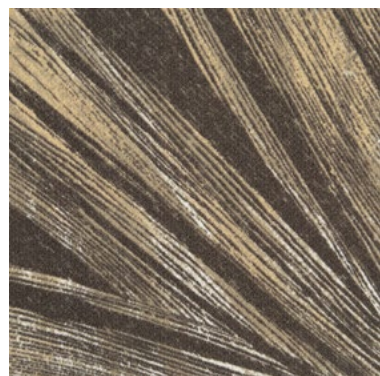
TER43-40
WETLAND GREEN



TER217-59
BROWN FIBRE



TER102
AUBURN HEMATITE



TER212-120
LINSEED TWINE



TER262-143
SOFT BLUSH



Walkway: Te Kākano - The Seed in Wetland Green | TEK43-40 | Monolithic Installation
Insert: Te Rau - The Leaf in Wetland Green | TER43-40 | Monolithic Installation



Tuia - To Stitch

The Tuia pattern infuses the floor with a serene elegance, turning it into a canvas of artistic precision. The intricately designed lines weave in multiple directions, creating a cohesive network of connections.

This pattern masterfully interacts with light and shadow across the woven fabric, enriching its depth and dimension while cultivating a welcoming ambiance.

Each step within this space echoes the artisan's spirit, transforming the interior from mere design into a dynamic, living masterpiece.



Insert: Tuia - To Stitch in White Clay | TUI144-6 | Herringbone Installation
Walkway: Tuia - To Stitch in Stone Grey | TUI153-133 | Herringbone Installation



TUI153-133
STONE GREY



TUI144-6
WHITE CLAY



TUI217-59
BROWN FIBRE



TUI212-120
LINSEED TWINE



TUI42
FLAX GREEN



TUI43-40
WETLAND
GREEN



TUI102
AUBURN
HEMATITE



TUI262-143
SOFT BLUSH

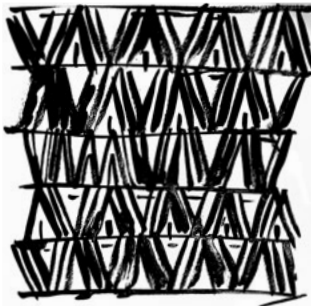




Raranga - To Weave

The woven patterns of Raranga display a captivating visual allure with intricate nuances, highlighting a dynamic interaction of light and shadow. Each precisely positioned line reveals careful craftsmanship and deliberate design. This weaving technique transforms interior spaces into vibrant tapestries of texture and storytelling, harmoniously blending traditional and modern elements.

The Raranga pattern offers a tactile experience that adds warmth and character to any room, creating not just a living space but a narrative to be shared.





RAR153-133
STONE GREY



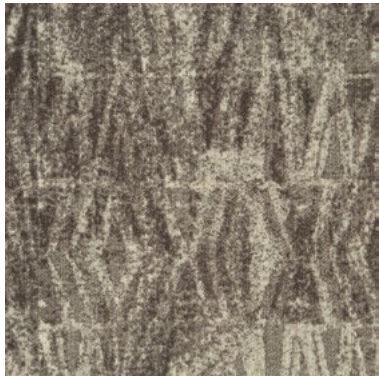
RAR42
FLAX GREEN



RAR144-6
WHITE CLAY



RAR43-40
WETLAND GREEN



RAR217-59
BROWN FIBRE



RAR102
AUBURN HEMATITE



RAR212-120
LINSEED TWINE



RAR262-143
SOFT BLUSH



Raranga - To Weave in White Clay | RAR144-6 | Monolithic Installation

Colourway

Harakeke - Flax

Multi tile repeat: 1m x 1m | 1 x 6 tile pattern



HAR153-133
STONE GREY



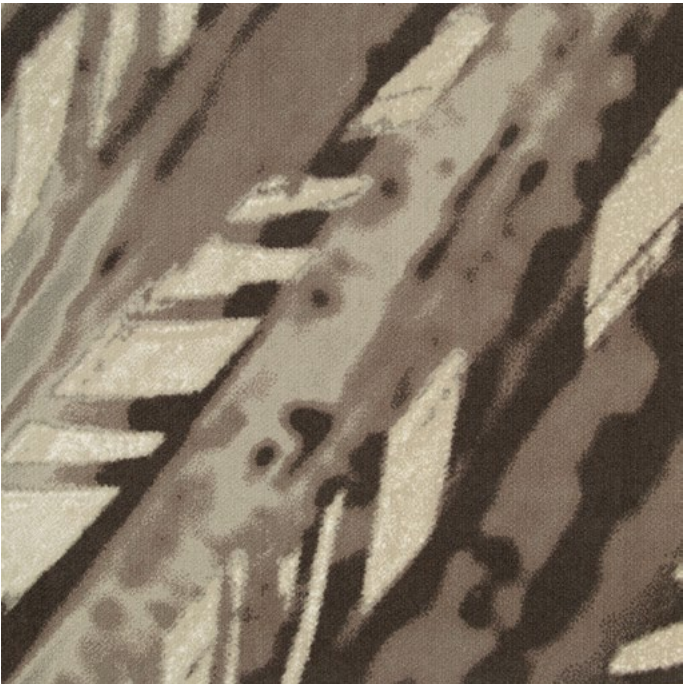
HAR144-6
WHITE CLAY



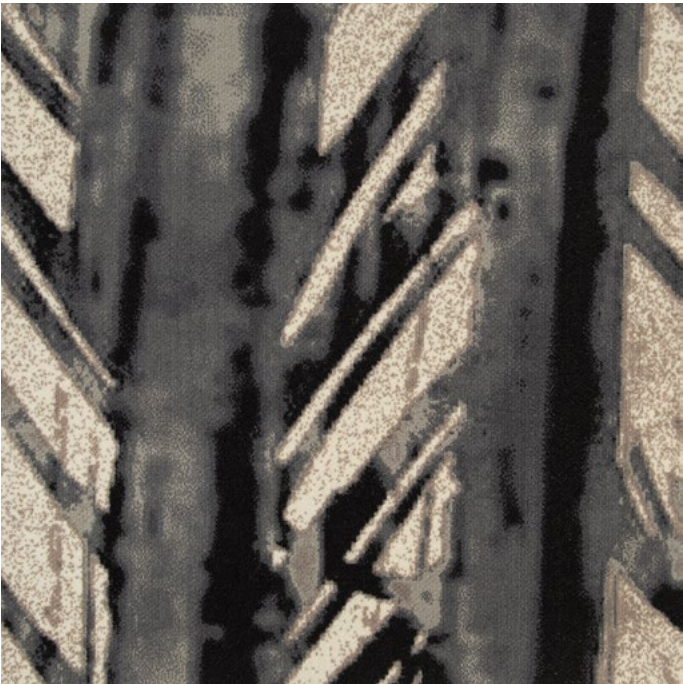
HAR42
FLAX GREEN



HAR43-40
WETLAND GREEN



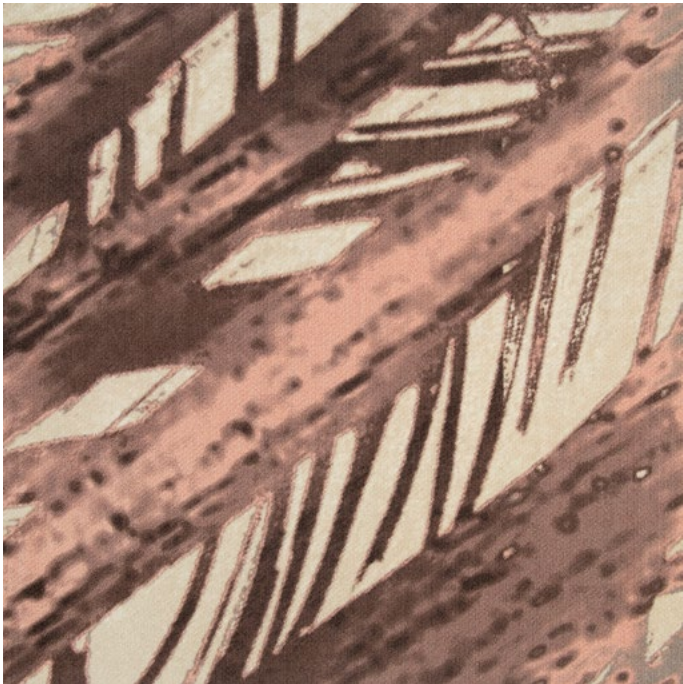
HAR217-59
BROWN FIBRE



HAR212-120
LINSEED TWINE



HAR102
AUBURN HEMATITE



HAR262-143
SOFT BLUSH

Te Kākano - The Seed

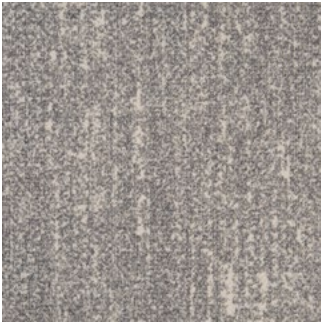
Multi tile repeat: 50cm x 50cm | 1 x 8 tile pattern



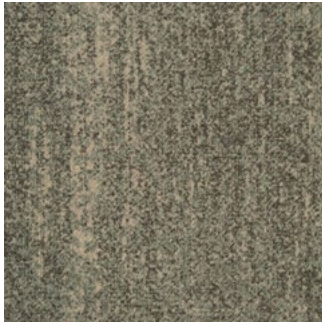
TEK153-133
STONE GREY



TEK42
FLAX GREEN



TEK144-6
WHITE CLAY



TEK43-40
WETLAND GREEN



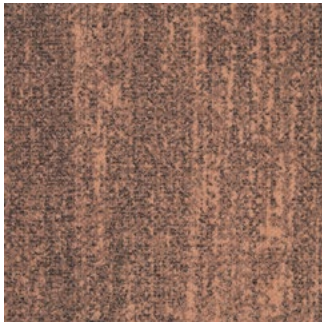
TEK217-59
BROWN FIBRE



TEK102
AUBURN HEMATITE



TEK212-120
LINSEED TWINE



TEK262-143
SOFT BLUSH

Pakiaka - The Root

Multi tile repeat: 50cm x 50cm | 1 x 4 tile pattern



PAK153-133
STONE GREY



PAK42
FLAX GREEN



PAK144-6
WHITE CLAY



PAK43-40
WETLAND GREEN



PAK217-59
BROWN FIBRE



PAK102
AUBURN HEMATITE



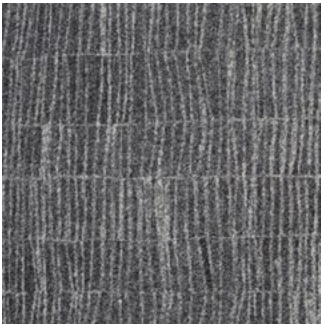
PAK212-120
LINSEED TWINE



PAK262-143
SOFT BLUSH

Muka - The Fibre

Multi tile repeat: 50cm x 50cm | 1 x 4 tile pattern



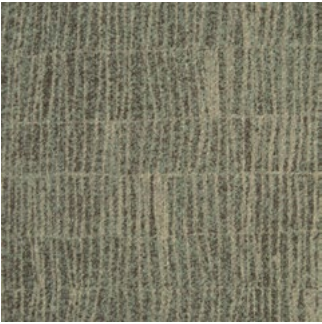
MUK153-133
STONE GREY



MUK42
FLAX GREEN



MUK144-6
WHITE CLAY



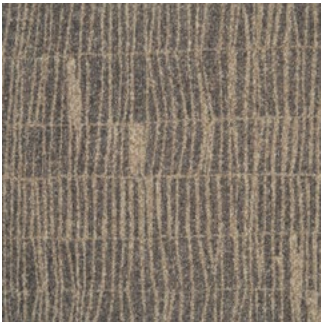
MUK43-40
WETLAND GREEN



MUK217-59
BROWN FIBRE



MUK102
AUBURN HEMATITE



MUK212-120
LINSEED TWINE



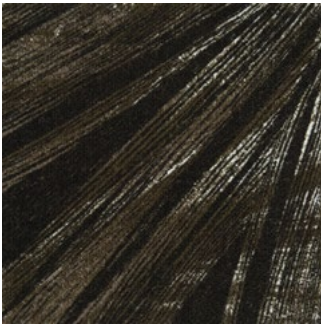
MUK262-143
SOFT BLUSH

Te Rau - The Leaf

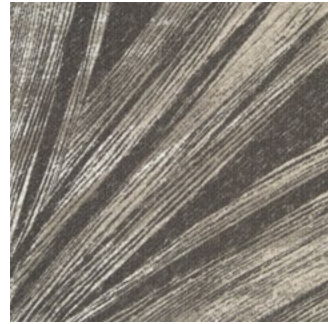
Multi tile repeat: 50cm x 50cm | 1 x 4 tile pattern



TER153-133
STONE GREY



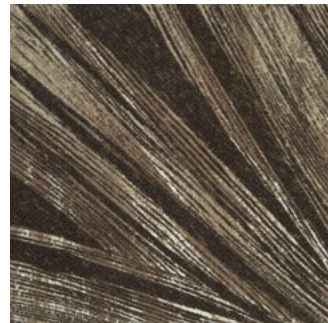
TER42
FLAX GREEN



TER144-6
WHITE CLAY



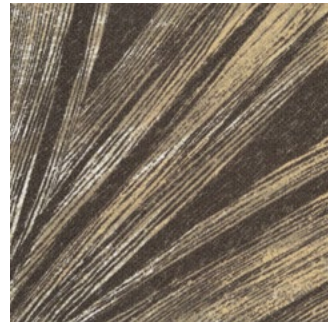
TER43-40
WETLAND GREEN



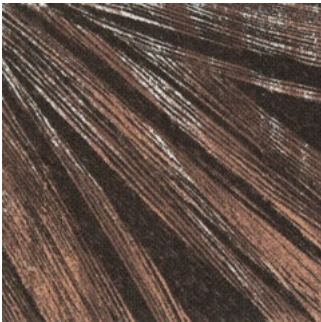
TER217-59
BROWN FIBRE



TER102
AUBURN HEMATITE



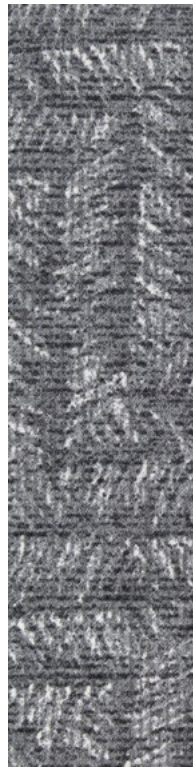
TER212-120
LINSEED TWINE



TER262-143
SOFT BLUSH

Tuia - To Stitch

Multi plank repeat: 25cm x 1m | 1 x 16 plank pattern



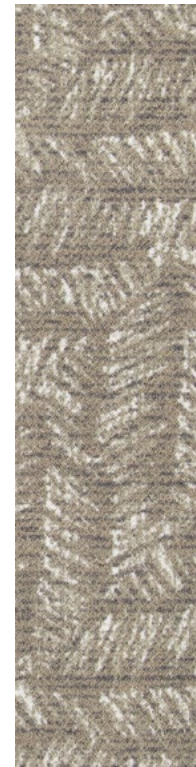
TUI153-133
STONE GREY



TUI144-6
WHITE CLAY



TUI217-59
BROWN FIBRE



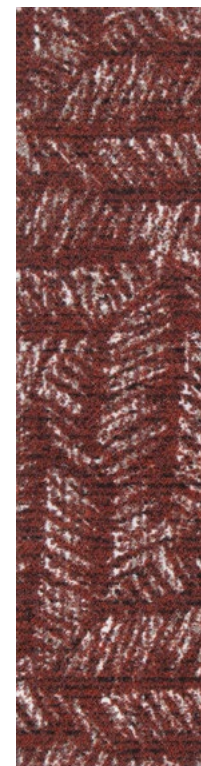
TUI212-120
LINSEED TWINE



TUI42
FLAX GREEN



TUI43-40
WETLAND
GREEN



TUI102
AUBURN
HEMATITE



TUI262-143
SOFT BLUSH

Raranga - To Weave

Multi tile repeat: 50cm x 50cm | 1 x 7 tile pattern



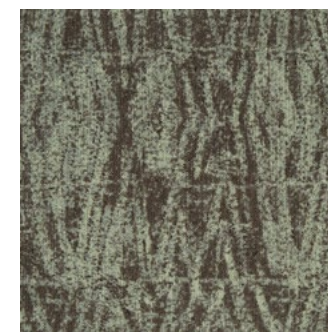
RAR153-133
STONE GREY



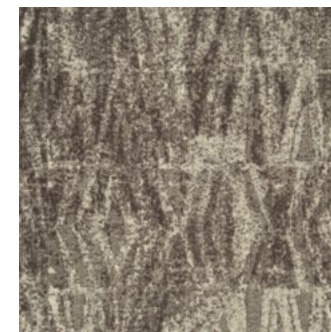
RAR42
FLAX GREEN



RAR144-6
WHITE CLAY



RAR43-40
WETLAND GREEN



RAR217-59
BROWN FIBRE



RAR102
AUBURN HEMATITE



RAR212-120
LINSEED TWINE



RAR262-143
SOFT BLUSH



It takes humans to protect humanity.

Make changes to end climate change.

Design a better future.

M/PACT™
CARBON NEUTRAL PROGRAM

CLIMATE CHANGE IS ONE OF THE GREATEST THREATS FACING HUMANITY, AND WE ARE ALL RESPONSIBLE.

That's why Milliken Floor Covering launched the **M/PACT™** carbon neutral program. Today, our carpet, LVT and entrance flooring tiles are carbon neutral everywhere in the world.

M/PACT carbon neutral products offset the raw materials and manufacturing carbon footprint* by using 3rd party Verified Carbon Standard Credits that support renewable energy and carbon reduction technologies to help fight climate change. When you choose M/PACT products, you can be sure your choice is carbon neutral.



SCAN TO LEARN MORE ABOUT OUR CARBON NEUTRAL PROGRAM

M/PACT™

M/PACT™
CARBON NEUTRAL PROGRAM

Investment

Today we invest through renewable energy credits, verified carbon offsets, and installing solar power at our Sydney manufacturing facility. We also continue to invest in more efficient manufacturing technologies and in local supply chains.

Materials

We believe material health is essential to enable circularity. The use of materials that don't contain harmful chemicals provides a critical pathway to end-of-life product recycling. Our carpet, LVT and entrance flooring tiles are recyclable.

Dematerialisation

We continue to support the advancement of a circular economy – one that uses less new raw materials and creates less waste. For example, we have created a portfolio of carpet tiles that use less raw material, reducing embodied carbon. We will continue to challenge ourselves and our supply chains to extend innovation in new technologies for dematerialisation.

Manufacturing

We leverage our global manufacturing and local supply chains to minimise carbon emissions. More efficient manufacturing and distribution not only reduces our global carbon footprint, it also has a direct positive impact on the communities we call home.

Wellness

Climate change directly impacts human health and wellness. Pollution. Natural disasters. Droughts. As a founding member of the Well Living Lab and a Well Portfolio Member, we aspire to design products that enhance well-being and quality of life of indoor spaces.

We will continue to do more to lower our carbon footprint.

The M/PACT™ program is long-term, because the fight to stop climate change will be a long one. As a global manufacturing company, we set 2025 goals that align with the United Nations Sustainable Development Goals. We push ourselves to meet our targets on Planet, Product, and People, including a 25% reduction in indexed greenhouse emissions by 2025. These 2025 goals are a benchmark for us to achieve more, faster. We encourage you to specify our carbon neutral products for all of your projects to ensure the climate change journey continues.

Together, we can make a positive **M/PACT™** on the world for generations.

* As calculated and verified scope A1-3 GWP through a ISO14025/ISO14040 compliant LCA and published in third party EPDs.

Milliken™



Self-sanitising Carpet

Integrated Infection Control



MGUARD+ treatment kills 99% of the SARS-CoV-2 virus within 2 hours of contact with Milliken PrintWorks™ carpet tiles.

MGUARD+ treatment kills 99% of S. aureus, E. coli, K. pneumoniae in 24 hours as per AATCC 174-2.

Duration of protection varies with use.

Powered by HealthGuard®.

Only available in Australia and New Zealand.

Declare.



WellBAC®

Milliken WellBAC® open cell foam cushion provides superior durability, appearance retention and cushioning.



UNDERFOOT COMFORT
Up to 24% greater underfoot comfort for enhanced ergonomics whilst standing.



ACOUSTIC VALUES
Up to 50% improved acoustics for quieter, more productive spaces.



INDOOR AIR QUALITY
Enhanced Indoor Air Quality (Green Label Plus™ Certified Low VOC) for improved occupant and installer well-being.



MOISTURE MITIGATION
Industry leading moisture management with non-reactive backings to enhance the installation process, saving time and money.



MATERIAL HEALTH
3rd party Verified Declare™ Red-List Free products for occupant and installer well-being.



CIRCULARITY
100% Recyclable through the Milliken N/XT LIFE circularity program for both installation waste and end-of-life.

FACE FABRIC

Patterns and structures made up of nylon yarns with our state of the art tufting technology.

PRIMARY BACKING

The face yarn is tufted through a high quality non-woven textile. The structure of the textile holds the yarn in place acting as the primary backing.

PRECOAT

The precoat layer locks the tufted yarns in the primary backing to ensure good tuft bind strength between the yarns and the backing.

FIBERGLASS

A high quality fiberglass layer is embedded in the polyolefin compound to ensure dimensional stability of the tile.

SECONDARY BACKING

Proprietary Polyolefin compound layer formulated by Milliken R&D scientists to create a durable and stable tile. Our formulation does not contain PVC or plasticizers.

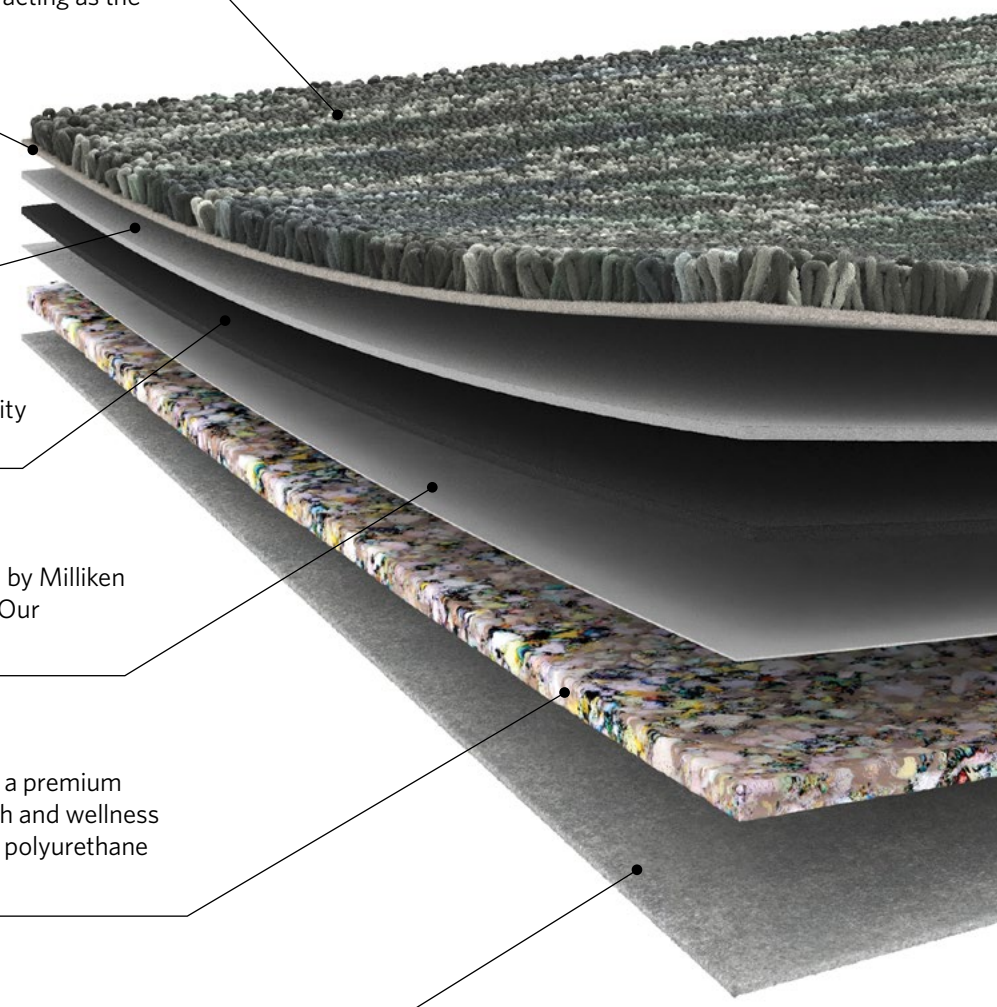
PREMIUM CUSHION

WellBAC® Comfort and Comfort Plus incorporate a premium cushion layer, designed to provide additional health and wellness benefits. Milliken's cushion is made from recycled polyurethane foam.

FELT BACK

A protective non-woven textile layer provides a breathable non-reactive finish. It enhances health and wellness.

Milliken's standard cushion backing system — offering enhanced underfoot comfort, acoustic and wear performance.



PĀ HARAKEKE

Harakeke - Flax | Te Kākano - The Seed | Pakiaka - The Root | Muka - The Fibre | Te Rau - The Leaf | Tuia - To Stitch | Raranga - To Weave



When you choose M/PACT™ products, you can be sure your choice is carbon neutral. M/PACT™ carbon neutral products offset the raw materials and manufacturing carbon footprint* by using 3rd party Verified Carbon Standard Credits that support renewable energy and carbon reduction technologies to help fight climate change.
*as calculated and verified through a ISO14025/ISO14040 compliant LCA and published in third party EPD.

Standard Backing	Cushion Backing - WellBAC® Comfort (PVC FREE) (Non-Reactive Cushion Backing) - Cool Stripe, BK16, Quattra Cushion Backing - WellBAC® Comfort Plus (PVC FREE) (Non-Reactive Cushion - Backing) - Road Runner
Acoustic Value	Noise Reduction Coefficient – NRC ≥ 0.25 Impact Sound Pressure Level - Ln,w ≤ 47dB - Cool Stripe, BK16, Quattra Impact Sound Pressure Level - Ln,w ≤ 45dB - Road Runner
Concrete Slab Moisture Mitigation	Site-Related Solutions (SRS): Milliken cushion-backed tile + Non-Reactive Standard Adhesive means installation 45 days after a new concrete pour, fully warranted no moisture testing required. Refer to www.millikenfloors.com.au
Antiviral Antibacterial	MGUARD+ Antiviral and Antibacterial Treatment. For further information refer to www.millikenfloors.com.au



Walkway: Te Kākano - The Seed in Linseed Twine | TEK212-120 | Monolithic Installation
Insert: Harakeke - Flax in Auburn Hermatite | HAR102 | Monolithic Installation

PAKIAKA - THE ROOT (COOL STRIPE)

SPECIFICATION

Construction: Tufted, Textured Loop	Gauge 1/12	Recycled Content by Total Weight: 39%	Lightfastness (AATCC 16E): ≥ 4.0 at 80 Hours
Tile Size: 50cm x 50cm	Stitches Per Inch: 11.4	Nominal Total Thickness: 10.1mm	Static Electricity (AATCC-134) 20% R.H., 70°F: ≤ 3.5KV
Yarn Type: Milliken Certified 100% Nylon	Tufts: 136.8/in² (2,120/100cm²)	Nominal Pile Thickness: 3.4mm	Indoor Air Quality - CRI Green Label Plus™: ≤ 0.5mg/m³ (GLP0793)
Stain Resist Soil Release: StainSmart®	Total Pile Mass: 26 oz/yd2 (882 g/m2)	Nominal Total Weight: 109 oz/yd² (3,696 g/m²)	VOC: Pass (ISO 10580:2010)
Dye Method: PrintWorks™	Recyclable: 100%	Flammability (Radiant Panel Test): CHF/CRF = 6.2kW/m², Smoke value = 175%.min	ACCS Grading: CEHD 4*, REHD2 6*, Suitable for Stairs

RARANGA - TO WEAVE (BK16)

SPECIFICATION

Construction: Tufted, Textured Loop	Gauge 1/12	Recycled Content by Total Weight: 45%	Lightfastness (AATCC 16E): ≥ 4.0 at 80 Hours
Tile Size: 50cm x 50cm	Stitches Per Inch: 11.6	Nominal Total Thickness: 8.0mm	Static Electricity (AATCC-134) 20% R.H., 70°F: ≤ 3.5KV
Yarn Type: Milliken Certified 100% Nylon	Tufts: 139/in² (2,126/100cm²)	Nominal Pile Thickness: 2.1mm	Indoor Air Quality - CRI Green Label Plus™: ≤ 0.5mg/m³ (GLP3237)
Stain Resist Soil Release: StainSmart®	Total Pile Mass: 16 oz/yd² (543g/m²)	Nominal Total Weight: 94 oz/yd² (3,184 g/m²)	VOC: Pass (ISO 10580:2010)
Dye Method: PrintWorks™	Recyclable: 100%	Flammability (Radiant Panel Test): CHF/CRF = 5.1kW/m², Smoke value = 240%.min	ACCS Grading: CEHD 4*, REHD2 6*, Suitable for Stairs

TE KĀKANO - THE SEED, MUKA - THE FIBRE, TE RAU - THE LEAF, HARAKEKE - FLAX (QUATTRA)

SPECIFICATION

Construction: Tufted, Textured Loop	Gauge 1/10	Recycled Content by Total Weight: 45%	Lightfastness (AATCC 16E): ≥ 4.0 at 80 Hours
Tile Size: 50cm x 50cm, 100cm x 100cm* *Harakeke design only	Stitches Per Inch: 14.4	Nominal Total Thickness: 8.4mm	Static Electricity (AATCC-134) 20% R.H., 70°F: ≤ 3.5KV
Yarn Type: Milliken Certified 100% Nylon	Tufts: 144in² (2,230/100cm²)	Nominal Pile Thickness: 2.8mm	Indoor Air Quality - CRI Green Label Plus™: ≤ 0.5mg/m³ (GLP0793)
Stain Resist Soil Release: StainSmart®	Recyclable: 100%	Nominal Total Weight: 90.3 oz/yd² (3,062 g/m²)	VOC: Pass (ISO 10580:2010)
Dye Method: PrintWorks™		Flammability (Radiant Panel Test): CHF/CRF = 6.3kW/m², Smoke value = 136%.min	ACCS Grading: CMD 2*, REHD1 5*, Suitable for stairs

TUIA - TO STITCH (ROAD RUNNER)

SPECIFICATION

Construction: Tufted, Textured Loop	Gauge 1/10	Recycled Content by Total Weight: 44.1%	Lightfastness (AATCC 16E): ≥ 4.0 at 80 Hours
Tile Size: 25cm x 100cm	Stitches Per Inch: 10.3	Nominal Total Thickness: 10mm	Static Electricity (AATCC-134) 20% R.H., 70°F: ≤ 3.5KV
Yarn Type: Milliken Certified 100% Nylon	Tufts: 103/in² (1,595/100cm²)	Nominal Pile Thickness: 2.79mm	Indoor Air Quality - CRI Green Label Plus™: ≤ 0.5mg/m³ (GLP0793)
Stain Resist Soil Release: StainSmart®	Total Pile Mass: 20oz/yd² (678g/m²)	Nominal Total Weight: 104 oz/yd² (3,526 g/m²)	VOC: Pass (ISO 10580:2010)
Dye Method: PrintWorks™	Recyclable: 100%	Flammability (Radiant Panel Test): CHF/CRF = 4.2kW/m², Smoke value = 271%.min	ACCS Grading: CEHD 4*, REHD2 6*, Suitable for Stairs

The recognised Product Certification Initiatives in the Green Star rating tools that contribute to the responsible product value of Milliken carpet tiles are as listed. The Green Building Council of Australia recognises Responsible Products that may contribute to a Green Star rating through its Responsible Credits (rpv).	1. ECS Carpet Standard v2.2 2. Cradle to Cradle 3. Declare 2.0 - Red List Free 4. Science-Based Targets Initiative (SBTi)	GBCA Responsible Product Value 30 rpv
--	--	---

Recommended Installation Method(s): Harakeke (1m x 1m): Monolithic Tuia (25cm x 1m): Ashlar (Vertical), Herringbone Muka (50cm x 50cm): Brick (Horizontal) Te Kākano, Pakiaka, Te Rau, Raranga (50cm x 50cm): Monolithic	Recommended Area of Use: Commercial Extra Heavy Duty	Warranties: 20-year Wear Warranty 20-year Dimensional Stability Warranty 20-year Anti-Static Warranty 20-year Castor Chair Wear Warranty	Environmental: ECS Grading - Level 4 + (Core + No Chemicals of Concern + EPD + Carbon Neutral) Declare - RED LIST FREE Cradle to Cradle - Silver M/PACT™ Carbon Neutral Program Environmental Product Declaration (EPD) Health Product Declaration (HPD) Works with WELL
--	--	---	--



Walkway: Pakiaka - The Root in Stone Grey | PAK153-133 | Monolithic Installation
 Inserts: Raranga - To Weave in Wetland Green | RAR43-40 | Monolithic Installation



Declare.



Australia:
 Toll Free: 1800 668 372
 New Zealand:
 Toll Free: 0800 668 372
www.millikenfloors.com.au
 (Australia & New Zealand)

This WellBAC® cushion-back carpet tile product is covered by one or more patents, published applications and/ or patents pending. Specifications are subject to normal manufacturing tolerances and may be changed without prior notice. Copies of actual test results are available upon request.

© 2024 Milliken & Company | Design © Milliken & Company

Milliken