



BOTANIC
IMPRESSIONS

Milliken



2

3



4

Lenticels in Wollemi Pine | LTC144-28-100 | Monolithic Installation

Botanic Impressions

Introducing the enchanting Botanic Impressions collection, consisting of four meticulously curated designs that draw inspiration from the fascinating microscopic world of man-made botanic elements. This collection aims to create a profound connection to nature within our built environments, thereby positively impacting our emotions, attitudes, and behaviours.

The four designs, namely Arboretum, Grevillea, Heartwood, and Lenticels, boast an organic aesthetic with layered textures that mimic the opulent appearance of nature. These intricate patterns capture the intricate details, complexity, and depth of the botanic elements, creating a captivating visual experience.

Experience the transformative power of biophilic design as it breathes life into your interior space, infusing it with the serene essence of nature.



ARBORETUM



GREVILLEA



HEARTWOOD



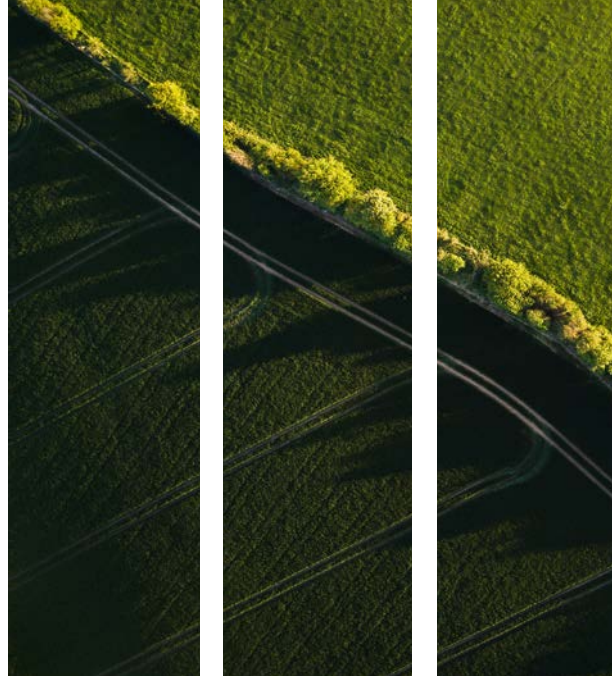
LENTICELS

5

Arboretum

Inspired by the captivating allure of a serene outdoor sanctuary, the Arboretum design seeks to embody the beauty and tranquility found within lush, majestic trees. Mimicking the atmosphere of an enchanting tree museum, this design serves as a sanctuary of solace and rejuvenation.

With its thoughtfully layered and textured woven pattern, the Arboretum design seamlessly flows throughout each room, creating a harmonious and inviting atmosphere. This exquisite design not only adds visual appeal but also nurtures the soul, offering a sense of nourishment and comfort within your living space.





Rug Insert: Arboretum in Blue Poppy | ARB180-126-119 | Monolithic Installation
 Field: Metro Park Wood | Golden Oak in Amber | GOK22 | Ashlar (Vertical) Installation



Arboretum in Blue Poppy | ARB180-126-119 | Monolithic Installation



Arboretum in Grey Box Gum | ARB21-83-178 | Monolithic Installation



Arboretum in Pine Bark | ARB144-122-178 | Monolithic Installation

EXPLORE COORDINATE MOOD BOARDS

Yellow

Botanic Impressions | Heartwood
HTW144-166-100 | Desert Marigold

Beyond Chroma | Chroma
CMA134-75 Mustard

Colour Compositions
CCM180 Cobble

Metro Park Wood
Eucalyptus Saligna | ECS122 Koala

Botanic Impressions | Lenticels
LTC144-166-100 Desert Marigold

Metro Park Wood | Heritage
HTG218 Honor

Botanic Impressions | Lenticels
LTC180-6-33 Silver Birch

Botanic Impressions | Arboretum
ARB144-166-100 Desert Marigold

Lumenology | Light Wash
LLW209-189 Lucent

Quiet Woods | Lateral Wave
LAW178 Ironwood

Live Circuit | Current
CUR218 Amp

Arboretum



ARB180-6-33
SILVER BIRCH



ARB21-83-178
GREY BOX GUM



ARB144-166-100
DESERT MARIGOLD



ARB144-28-100
WOLLEMI PINE



ARB212-108-133
IRONBARK



ARB144-122-178
PINE BARK



ARB262-26-178
ROSE SHE OAK



ARB180-126-119
BLUE POPPY



ARB180-6-33 | SILVER BIRCH
MULTI TILE PATTERN | 4 TILES SHOWN



Grevillea

The long flowering design of Grevillea introduces a remarkable element to the floor, accentuated by its slender and intricate needle-like stems gracefully weaving through the surface. This striking feature serves as a captivating focal point that effortlessly catches the eye.

The Grevillea design is subtly positioned on the floor bed, expertly backed by a serene and tonal background. This deliberate placement elevates the overall aesthetic, creating a calming and visually balanced flooring space that radiates tranquility.





From left to right: Heartwood in Silver Birch (HTW180-6-33) and Grevillea in Blue Poppy (GRV180-126-119) | Monolithic Installation



Rug Insert: Grevillea in Rose She Oak | GRV262-26-178 | Monolithic Installation
Field: Metro Park Wood | Kokutan in Kuro | KKT145 | Ashlar (Vertical) Installation

EXPLORE COORDINATE MOOD BOARDS

Green

Mixed Formations:
Made of Wood
Soft Alignment
SAL219 Cream

Botanic Impressions | Lenticels
LTC144-28-100 Wollemi Pine

Lumenology | Light Stitch
LLS203 Greenlight

Beyond Chroma | Chroma
CMA218 Paving Stone

Mixed Formations: Made of Wood | Gunnison
GUN233-176-259 Brown

Botanic Impressions | Grevillea
GRV144-28-100 Wollemi Pine

Botanic Impressions | Arboretum
ARB144-28-100 | Wollemi Pine

Lumenology | Light Wash
LLW209-203 Opaque

Quiet Woods | Lateral Wave
LAW114 Kona

Lumenology | Light Stitch
LLS144 Reveal

Metro Park Stone
Slate | SLA209 Mica

Beyond Chroma | Chroma
CMA64-62 Sage

Metro Park Stone
Polished Concrete
PLC144 Scoring

Botanic Impressions | Heartwood
HTW144-28-100 Wollemi Pine

Grevillea



GRV180-6-33
SILVER BIRCH



GRV21-83-178
GREY BOX GUM



GRV144-166-100
DESERT MARIGOLD



GRV144-28-100
WOLLEMI PINE



GRV212-108-133
IRONBARK



GRV144-122-178
PINE BARK



GRV262-26-178
ROSE SHE OAK



GRV180-126-119
BLUE POPPY



GRV180-6-33 | SILVER BIRCH
MULTI TILE PATTERN | 4 TILES SHOWN

Heartwood

The Heartwood design draws inspiration from the intricate growth patterns of trees, specifically the layers found within the cross-cut of an old-growth tree.

By showcasing the beautiful heartwood that is revealed when the outer bark is removed, this design captures the essence of natural depth and complexity. Through skillful layering and the use of tonal effects, the pattern faithfully replicates the intricate texture and visual appeal of a tree's central heart.

This design effortlessly adds depth and interest to any space, making it visually engaging and captivating. The Heartwood pattern seamlessly combines functionality with an aesthetic appeal, making it an ideal choice for enhancing any room.





24

Field: Heartwood in Silver Birch | HTW180-6-33 | Monolithic Installation
Rug Insert: Heartwood in Blue Poppy | HTW180-126-119 | Monolithic Installation
Kitchen: Metro Park Stone | Porcelain in Cream | POR48 | Ashlar (Vertical) Installation



25

Heartwood in Silver Birch | HTW180-6-33 | Monolithic Installation



EXPLORE COORDINATE MOOD BOARDS

Lumenology | Light Stitch
LLS257 Translucent

Botanic Impressions | Arboretum
ARB180-126-119 Blue Poppy

Beyond Chroma | Chroma
CMA118 Charcoal

Blue

28

Botanic Impressions | Lenticels
LTC180-6-83 Silver Birch

Metro Park Stone | Chalkboard
CKB133 Iron

Botanic Impressions | Heartwood
HTW180-126-119 Blue Poppy

Metro Park Wood | Pike
PKK144 Cloud

Beyond Chroma | Chroma
CMA108 Anchor

Beyond Chroma | Chroma
CMA133 Night Sky

Botanic Impressions | Grevillea
GRV180-126-119 Blue Poppy

Botanic Impressions | Lenticels
LTC180-126-119 Blue Poppy

Beyond Chroma | Chroma
CMA73 Biro Blue

Heartwood



HTW180-6-33
SILVER BIRCH



HTW21-83-178
GREY BOX GUM



HTW144-166-100
DESERT MARIGOLD



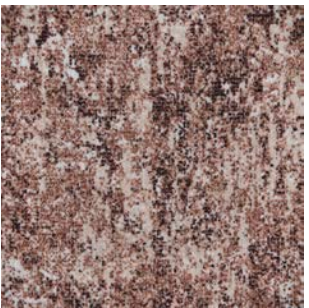
HTW44-28-100
WOLLEMI PINE



HTW212-108-133
IRONBARK



HTW144-122-178
PINE BARK



HTW262-26-178
ROSE SHE OAK



HTW180-126-119
BLUE POPPY



HTW180-6-33 | SILVER BIRCH
MULTI TILE PATTERN | 4 TILES SHOWN

29



Lenticels

Inspired by the distinct patterns found on the bark of woody stems, the Lenticels design brings to life the stripy scarifications and elongated textures found in longitudinal, transverse, and same-oriented patterns.

The design incorporates tonal variations that highlight the functionality of lenticels, which facilitate the exchange of oxygen and carbon dioxide, and release of water vapour. These functionalities are represented by the interplay of dark and light tones within the design. Carefully curated to strike the perfect balance, this versatile design brings a soothing effect to any interior space.





Lenticels in Blue Poppy | LTC180-126-119 | Monolithic Installation



Lenticels in Rose She Oak (LTC262-26-178) and
Grevillea in Rose She Oak (GRV262-26-178) | Monolithic Installation

EXPLORE COORDINATE MOOD BOARDS

Red

Botanic Impressions | Heartwood
HTW262-26-178 Rose She Oak

Quiet Woods | Lateral Band
LAB206 Mystery Mist

Botanic Impressions | Lenticels
LTC262-26-178 Rose She Oak

36

Botanic Impressions | Heartwood
HTW21-83-178 Grey Box Gum

Botanic Impressions | Arboretum
ARB262-26-178 Rose She Oak

Exceed Buzz
BUZ144 Desert

Lumenology | Light Stitch
LLS60 | Degree

Lumenology | Light Stitch
LLS261 Phase

Botanic Impressions | Grevillea
GRV262-26-178 Rose She Oak

Nordic Stories | Tectonic
TTC124-94 Sandpiper

Lenticels



LTC180-6-33
SILVER BIRCH



LTC21-83-178
GREY BOX GUM



LTC144-166-100
DESERT MARIGOLD



LTC144-28-100
WOLLEMI PINE



LTC212-108-133
IRONBARK



LTC144-122-178
PINE BARK



LTC262-26-178
ROSE SHE OAK



LTC180-126-119
BLUE POPPY



LTC180-6-33 | SILVER BIRCH
MULTI TILE PATTERN | 4 TILES SHOWN

37



CREATING A BETTER WORLD

Milliken supports the Property Industry Foundation

Milliken is a proud partner of the Property Industry Foundation, an organisation devoted to alleviating the problem of youth homelessness. The Foundation builds homes for homeless youth and provides ongoing support for homes where young people can rebuild their lives.

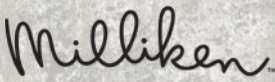
Homelessness is one of the most severe forms of disadvantage and social exclusion that any young person can experience. Youth homelessness affects 44,000 young Australians every night and understanding the scale of this issue, we were compelled to get involved and help in the great work the foundation is doing.

The Botanic Impressions collection is part of the 'Product Pathway'. The 'Product Pathway' is a unique fundraising model created by Milliken for the Property Industry Foundation where a contribution from every dollar of sales is donated to the foundation to build homes for homeless youth. The aim of the product pathway is to provide a regular and sustainable fundraising stream and with your help, we can keep assisting the Property Industry Foundation in tackling the issue of youth homelessness.

The Foundation's mission is to make a tangible difference to the serious and persistent problem of youth homelessness by partnering with respected charities to build safe environments and support charity managed initiatives focused on education, employment and well-being.



www.pif.com.au



www.millikenfloors.com.au

It takes humans to
protect humanity.

Make changes to end climate change.
Design a better future.

M/PACT™
CARBON NEUTRAL PROGRAM

CLIMATE CHANGE IS ONE OF THE GREATEST THREATS FACING HUMANITY, AND WE ARE ALL RESPONSIBLE.

That's why Milliken Floor Covering launched the **M/PACT™** carbon neutral program. Today, our carpet, LVT and entrance flooring tiles are carbon neutral everywhere in the world.

M/PACT carbon neutral products offset the raw materials and manufacturing carbon footprint* by using 3rd party Verified Carbon Standard Credits that support renewable energy and carbon reduction technologies to help fight climate change. When you choose M/PACT products, you can be sure your choice is carbon neutral.



SCAN TO LEARN MORE ABOUT
OUR CARBON NEUTRAL PROGRAM

M/PACT™

M/PACT™
CARBON NEUTRAL PROGRAM

Investment

Today we invest through renewable energy credits, verified carbon offsets, and installing solar power at our Sydney manufacturing facility. We also continue to invest in more efficient manufacturing technologies and in local supply chains.

Materials

We believe material health is essential to enable circularity. The use of materials that don't contain harmful chemicals provides a critical pathway to end-of-life product recycling. Our carpet, LVT and entrance flooring tiles are recyclable.

Dematerialisation

We continue to support the advancement of a circular economy – one that uses less new raw materials and creates less waste. For example, we have created a portfolio of carpet tiles that use less raw material, reducing embodied carbon. We will continue to challenge ourselves and our supply chains to extend innovation in new technologies for dematerialisation.

Manufacturing

We leverage our global manufacturing and local supply chains to minimise carbon emissions. More efficient manufacturing and distribution not only reduces our global carbon footprint, it also has a direct positive impact on the communities we call home.

Wellness

Climate change directly impacts human health and wellness. Pollution. Natural disasters. Droughts. As a founding member of the Well Living Lab and a Well Portfolio Member, we aspire to design products that enhance well-being and quality of life of indoor spaces.

We will continue to do more to lower our carbon footprint.

The M/PACT™ program is long-term, because the fight to stop climate change will be a long one. As a global manufacturing company, we set 2025 goals that align with the United Nations Sustainable Development Goals. We push ourselves to meet our targets on Planet, Product, and People, including a 25% reduction in indexed greenhouse emissions by 2025. These 2025 goals are a benchmark for us to achieve more, faster. We encourage you to specify our carbon neutral products for all of your projects to ensure the climate change journey continues.

Together, we can make a positive **M/PACT™** on the world for generations.

* As calculated and verified scope A1-3 GWP through a ISO14025/ISO14040 compliant LCA and published in third party EPDs.

Milliken

Milliken™

Self-sanitising Carpet

Integrated Infection Control



MGUARD+ treatment kills 99% of the SARS-CoV-2 virus within 2 hours of contact with Milliken PrintWorks™ carpet tiles.

MGUARD+ treatment kills 99% of *S. aureus*, *E. coli*, *K. pneumoniae* in 24 hours as per AATCC 174-2.

Duration of protection varies with use.

Powered by HealthGuard®.

Only available in Australia and New Zealand.

Declare.



WellBAC®

Milliken WellBAC® open cell foam cushion provides superior durability, appearance retention and cushioning.



UNDERFOOT COMFORT

Up to 24% greater underfoot comfort for enhanced ergonomics whilst standing.



ACOUSTIC VALUES

Up to 50% improved acoustics for quieter, more productive spaces.



INDOOR AIR QUALITY

Enhanced Indoor Air Quality (Green Label Plus™ Certified Low VOC) for improved occupant and installer well-being.



MOISTURE MITIGATION

Industry leading moisture management with non-reactive backings to enhance the installation process, saving time and money.



MATERIAL HEALTH

3rd party Verified Declare™ Red-List Free products for occupant and installer well-being.



CIRCULARITY

100% Recyclable through the Milliken N/XT LIFE™ circularity program for both installation waste and end-of-life.

FACE FABRIC

Patterns and structures made up of nylon yarns with our state of the art tufting technology.

PRIMARY BACKING

The face yarn is tufted through a high quality non-woven textile. The structure of the textile holds the yarn in place acting as the primary backing.

PRECOAT

The precoat layer locks the tufted yarns in the primary backing to ensure good tuft bind strength between the yarns and the backing.

FIBERGLASS

A high quality fiberglass layer is embedded in the polyolefin compound to ensure dimensional stability of the tile.

SECONDARY BACKING

Proprietary Polyolefin compound layer formulated by Milliken R&D scientists to create a durable and stable tile. Our formulation does not contain PVC or plasticizers.

PREMIUM CUSHION

WellBAC® Comfort and Comfort Plus incorporate a premium cushion layer, designed to provide additional health and wellness benefits. Milliken's cushion is made from recycled polyurethane foam.

FELT BACK

A protective non-woven textile layer provides a breathable non-reactive finish. It enhances health and wellness.

Milliken's standard cushion backing system — offering enhanced underfoot comfort, acoustic and wear performance.

Milliken™

ARBORETUM



ARB180-6-33
SILVER BIRCH



ARB21-83-178
GREY BOX GUM



ARB144-166-100
DESERT MARIGOLD



ARB144-28-100
WOLLEMI PINE



ARB212-108-133
IRONBARK



ARB144-122-178
PINE BARK



ARB262-26-178
ROSE SHE OAK



ARB180-126-119
BLUE POPPY

HEARTWOOD



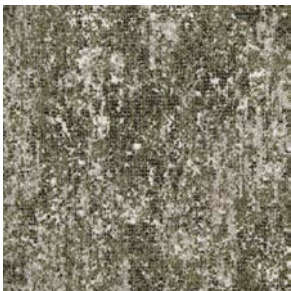
HTW180-6-33
SILVER BIRCH



HTW21-83-178
GREY BOX GUM



HTW144-166-100
DESERT MARIGOLD



HTW144-28-100
WOLLEMI PINE



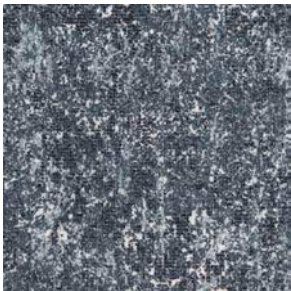
HTW212-108-133
IRONBARK



HTW144-122-178
PINE BARK



HTW262-26-178
ROSE SHE OAK



HTW180-126-119
BLUE POPPY

GREVILLEA



GRV180-6-33
SILVER BIRCH



GRV21-83-178
GREY BOX GUM



GRV144-166-100
DESERT MARIGOLD



GRV144-28-100
WOLLEMI PINE



GRV212-108-133
IRONBARK



GRV144-122-178
PINE BARK



GRV262-26-178
ROSE SHE OAK



GRV180-126-119
BLUE POPPY

LENTICELS



LTC180-6-33
SILVER BIRCH



LTC21-83-178
GREY BOX GUM



LTC144-166-100
DESERT MARIGOLD



LTC144-28-100
WOLLEMI PINE



LTC212-108-133
IRONBARK



LTC144-122-178
PINE BARK



LTC62-26-178
ROSE SHE OAK



LTC180-126-119
BLUE POPPY



BOTANIC IMPRESSIONS

Arboretum | Grevillea | Heartwood | Lenticels

SPECIFICATION



When you choose M/PACT™ products, you can be sure your choice is carbon neutral. M/PACT™ carbon neutral products offset the raw materials and manufacturing carbon footprint* by using 3rd party Verified Carbon Standard Credits that support renewable energy and carbon reduction technologies to help fight climate change. *as calculated and verified through a ISO14025/ISO14040 compliant LCA and published in third party EPD.

Standard Backing	Cushion Backing WellBAC® Comfort (PVC FREE) (Non-Reactive Cushion Backing)
Acoustic Value	Noise Reduction Coefficient - NRC ≥ 0.25 Impact Sound Pressure Level - Ln,w ≤ 47 dB
Concrete Slab Moisture Mitigation	Site-Related Solutions (SRS). Milliken Cushion backed tile + Non-Reactive Standard adhesive means installation 45 days after a new concrete pour, fully warranted no moisture testing required. Refer millikenfloors.com.au
Antiviral Antibacterial	MGUARD+ Antiviral and Antibacterial Treatment. Further information refer to millikenfloors.com.au

Construction	Tufted, Textured Loop	Static Electricity	≤ 3.5 KV
Tile Size	50cm x 50cm	(AATCC-134) 20% R.H., 70°F	
Yarn Type	Milliken Certified 100% Nylon	Indoor Air Quality	≤ 0.5 mg/m ³ (GLP0793)
Stain Resist Soil Release	StainSmart®	CRI Green Label Plus™	
Dye Method	PrintWorks™	VOC	Pass (ISO 10580:2010)
Gauge	1/12	ACCS Grading	CEHD 4*, REHD2 6*, Suitable for Stairs
Stitches Per Inch	11.4	Environmental	ECS Grading - Level 4 + (Core + No Chemicals of Concern + EPD + Carbon Neutral)
Tufts	136.8/in ² (2,120/100cm ²)		Declare - RED LIST FREE
Recyclable	100%		Cradle to Cradle - Silver
Recycled Content by	39%		M/PACT™ Carbon Neutral Program
Total Weight			Environmental Product Declaration (EPD)
Total Pile Mass	26 oz/yd ² (882 g/m ²)		Health Product Declaration (HPD)
Nominal Total Thickness	10.1mm		Works With WELL
Nominal Pile Thickness	3.4mm		
Nominal Total Weight	109 oz/yd ² (3,696 g/m ²)		
Flammability	CHF/CRF = 6.2kW/m ²		
(Radiant Panel Test)	Smoke value = 175%.min		
Lightfastness (AATCC 16E)	≥ 4.0 at 80 Hours		

The recognised Product Certification Initiatives in the Green Star rating tools that contribute to the responsible product value of Milliken carpet tiles are as listed. The Green Building Council of Australia recognises Responsible Products that may contribute to a Green Star rating through its Responsible Credits (rpv).	1. ECS Carpet Standard v2.2 2. Cradle to Cradle 3. Declare 2.0 - Red List Free 4. Science-Based Targets Initiative (SBTi)	GBCA Responsible Product Value 30 rpv
--	--	---

Recommended Installation Method(s)	Monolithic
Recommended Area of Use	Commercial Extra Heavy Duty
Warranties	20-year Wear Warranty 20-year Dimensional Stability Warranty 20-year Anti-Static Warranty 20-year Castor Chair Wear Warranty



Declare.



Australia:
Toll Free: 1800 668 372
New Zealand:
Toll Free: 0800 668 372
www.millikenfloors.com.au
(Australia & New Zealand)

This WellBAC® cushion-back carpet tile product is covered by one or more patents, published applications and/ or patents pending. Specifications are subject to normal manufacturing tolerances and may be changed without prior notice. Copies of actual test results are available upon request.

© 2024 Milliken & Company | Design © Milliken & Company

Heartwood in Ironbark | HTW212-108-133
Monolithic Installation