



**SALT LAKE**

Milliken™



# JOURNEY OF SALT LAKE

Our new collection draws inspiration from one of the most untapped and awe-inspiring landscapes on Earth—the salt lakes of Western China. Crafted with an eye toward nature’s raw and untouched beauty, each design is an exploration of texture, form, and timeless elements.

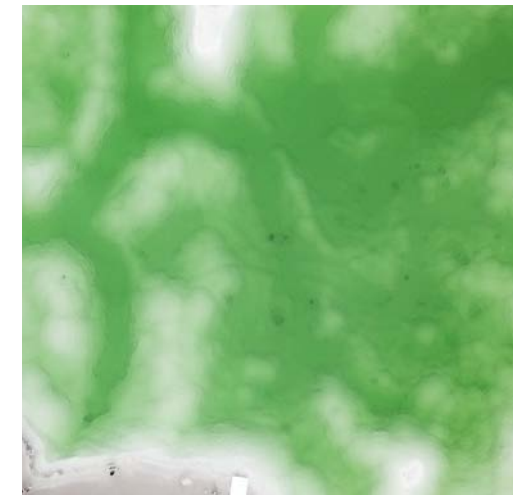
The Salt Lakes have sculpted these breathtaking surfaces over centuries, giving rise to natural formations that evoke serenity, depth, and a quiet power. This collection translates that pristine environment into modern interior design, offering patterns and textures that elevate any space.

## Natural Forces that Sculpt the Landscape

- An Exploration of Texture, Form, and Timeless Elements -



BROWN CORAL | SAND | DUNE



EMERALD GREEN



AZURE | GRAY | CRUST



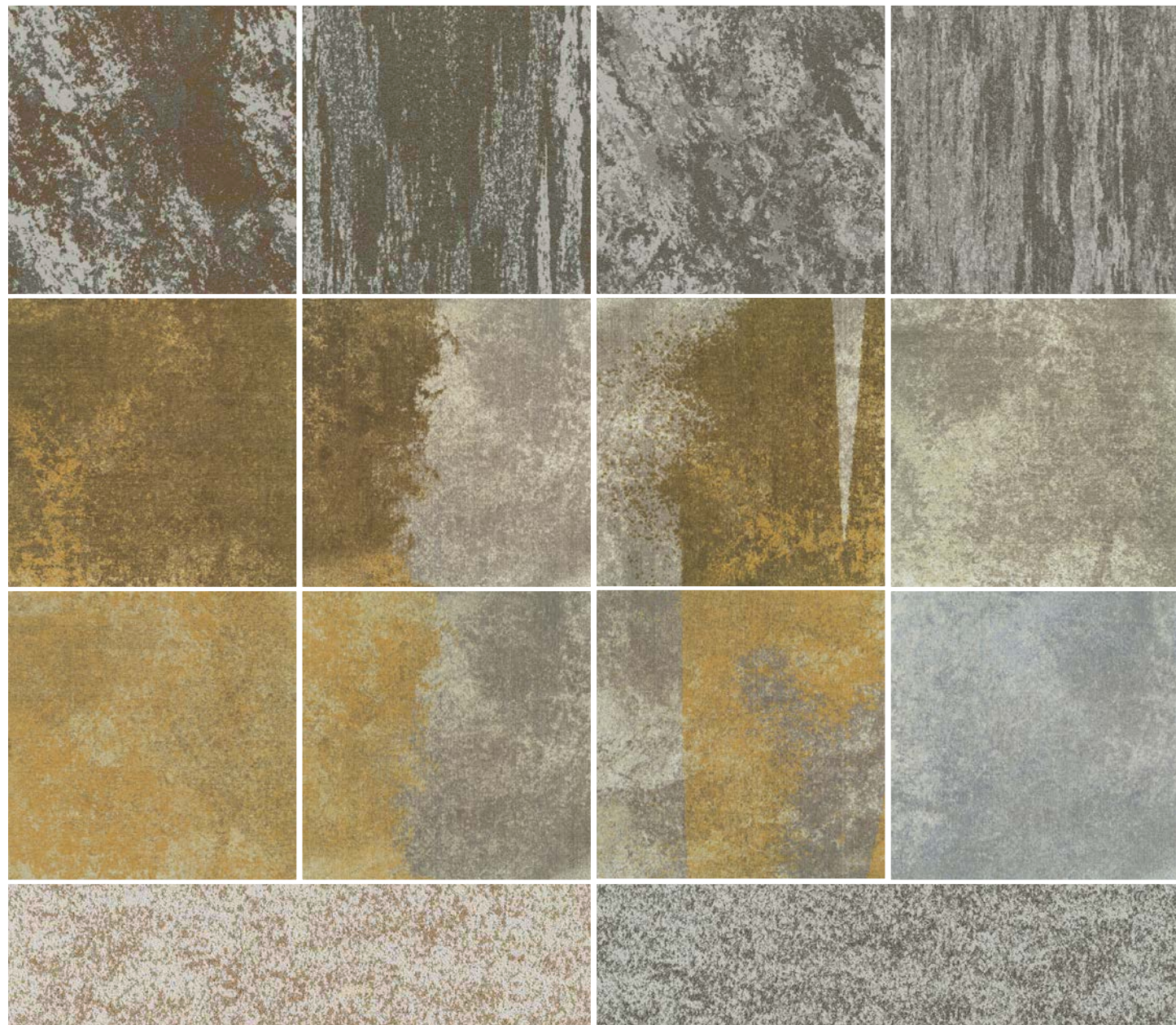
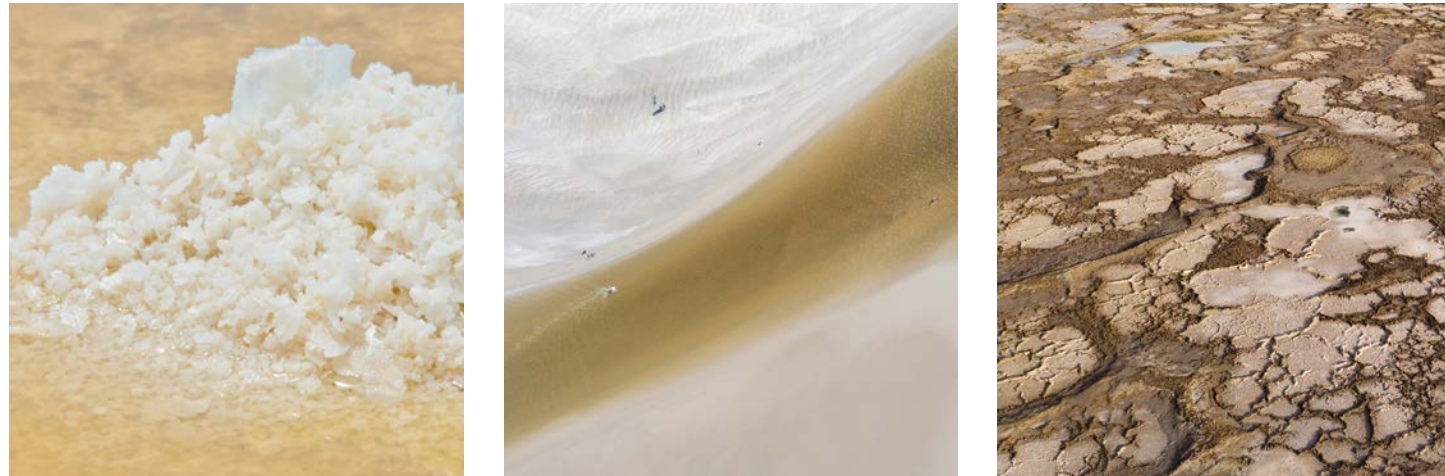
CORAL | PINK

- The Everchanging Hues of Nature -



S A L T L A K E

BROWN CORAL | SAND | DUNE



Crystals in Sand | CYT220-214 | SDN | Monolithic Installation





*Left to Right: Vista in Sand (VSA208-204),  
Vista Transition in Sand/Dune (VST208-204/13-57),  
Vista in Dune (VSA13-57),  
Vista in Dune/Sand (VST13-57/208-204)  
Vista in Sand (VSA208-204),  
and Sand/Bright Dune (VST208-204/76-231) and  
Vista in Bright Dune (VSA76-231)  
PrintWorks™ | Monolithic Installation*





*Top to Bottom:*  
Vista in Dune | VSA13-57 | PrintWorks™ (Tile size: 1m x 1m)  
Echoes in Sand/Dune | EHS208-204/13-57 | PrintWorks™ (Tile size: 1m x 1m)  
Crystals in Sand | CYT220-214 | SDN (Plank size: 25cm x 1m)



S A L T   L A K E  
BROWN CORAL | SAND | DUNE

Echoes in Sand/Dune | EHS208-204/13-57 | PrintWorks™ | Ashlar (Vertical) Installation



S A L T   L A K E  
BROWN CORAL | SAND | DUNE



Fata Morgana in Beige | FTM217-235 | SDN | Herringbone Installation

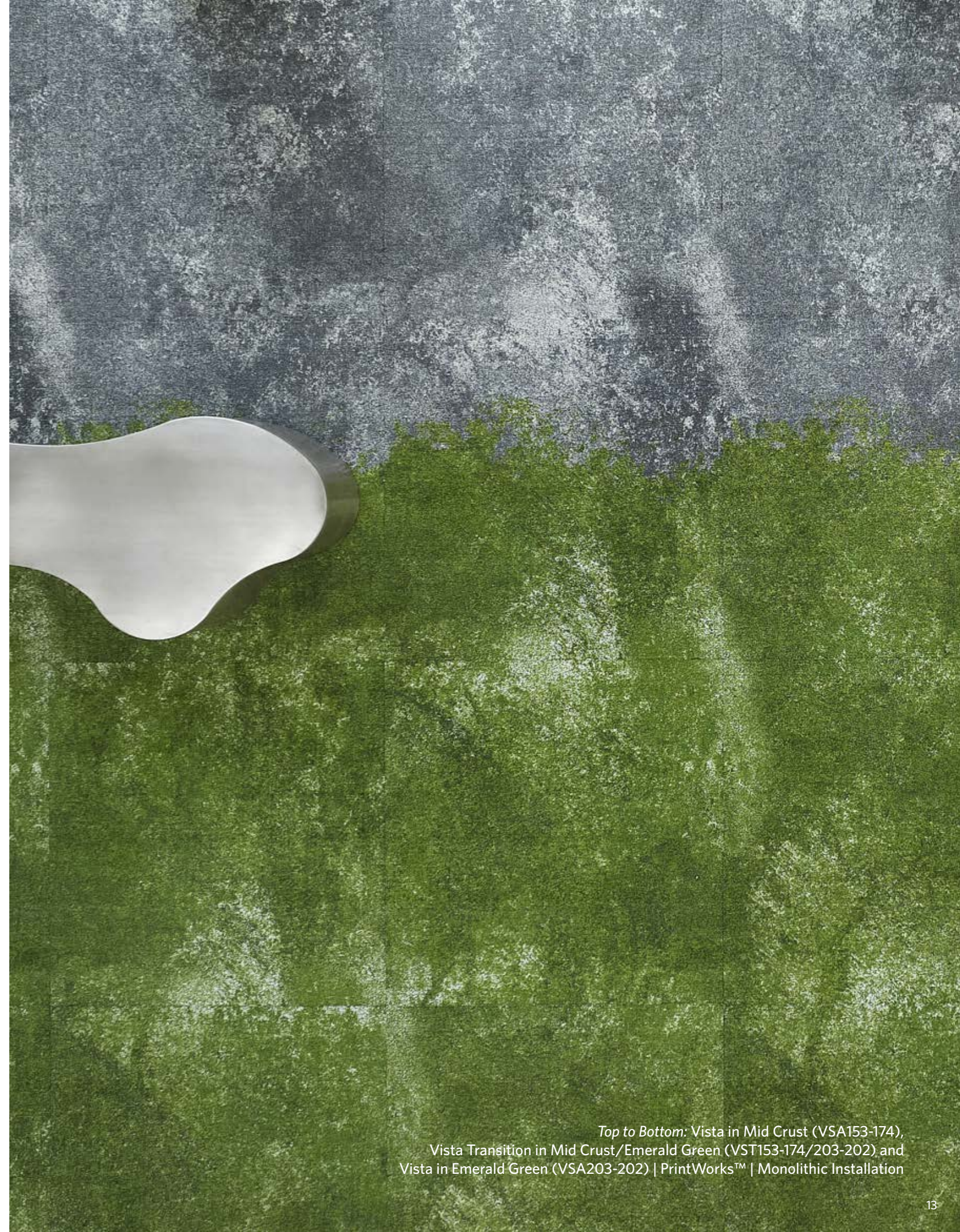
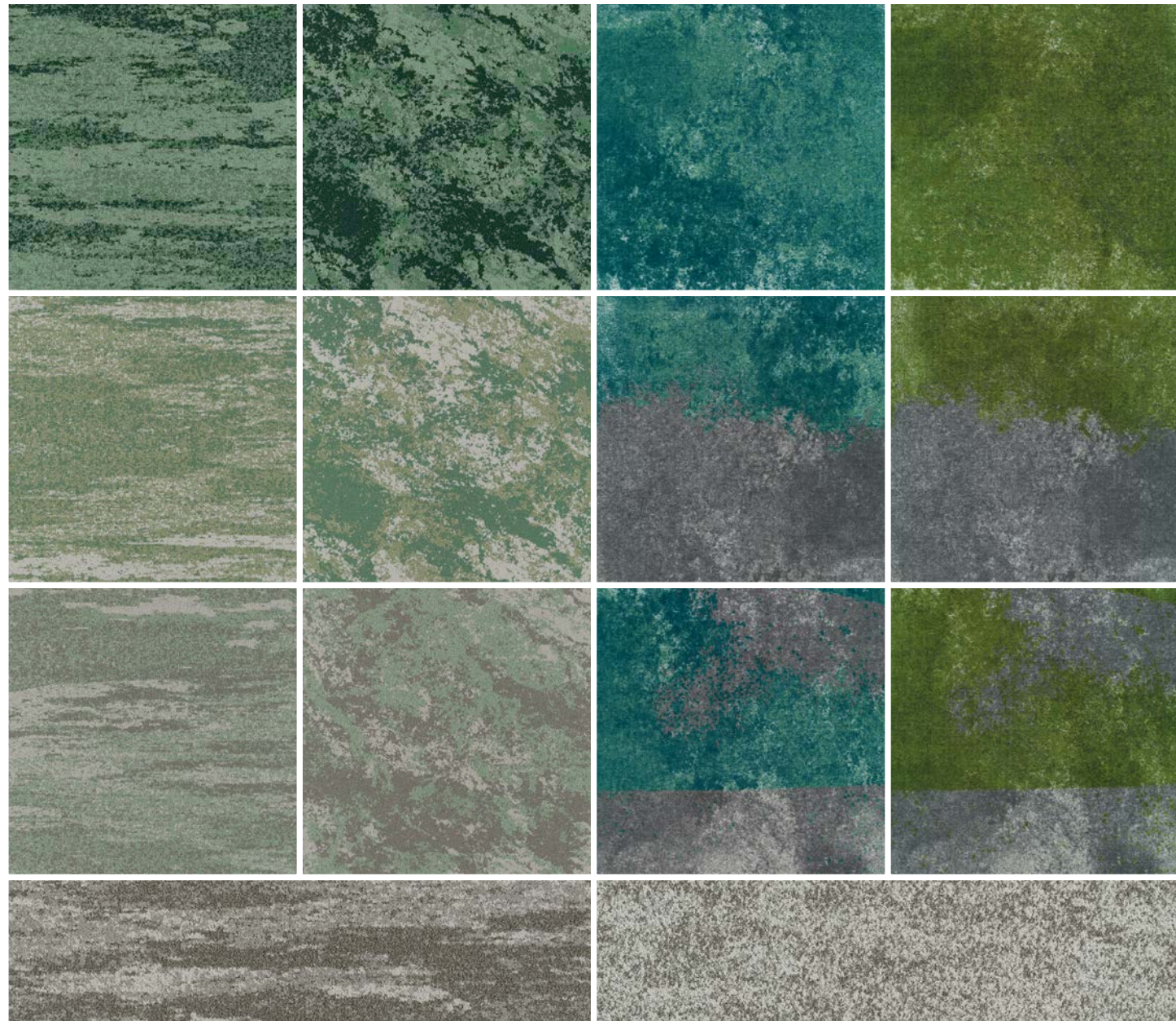
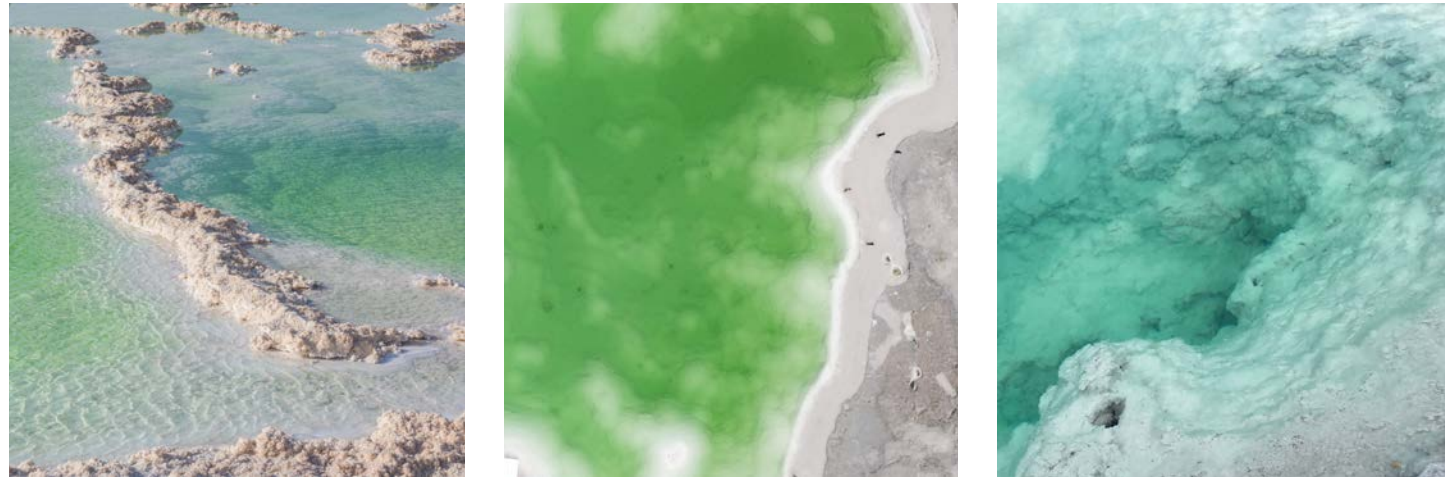


Fata Morgana in Brown Coral (FTM217-224-234) and  
Strata in Brown Coral (STA217-224-234) | SDN | Ashlar (Vertical) Installation



S A L T L A K E

# EMERALD GREEN



Top to Bottom: Vista in Mid Crust (VSA153-174),  
Vista Transition in Mid Crust/Emerald Green (VST153-174/203-202) and  
Vista in Emerald Green (VSA203-202) | PrintWorks™ | Monolithic Installation





*Random: Vista in Emerald (VSA162-201), Vista in Mid Crust (VSA153-174),  
Vista Transition in Mid Crust/Emerald (VST153-174/162-201) and Echoes in Mid Crust/Emerald (EHS153-174/162-201),  
PrintWorks™ | Custom Installation*



SALT LAKE  
EMERALD GREEN



Left to Right: Fata Morgana in DK Emerald (FTM240-275-274),  
Strata in DK Emerald (STA240-275-274), Emerald (STA213-240-275) and Emerald Beige (STA217-240-235),  
SDN | Herringbone Installation

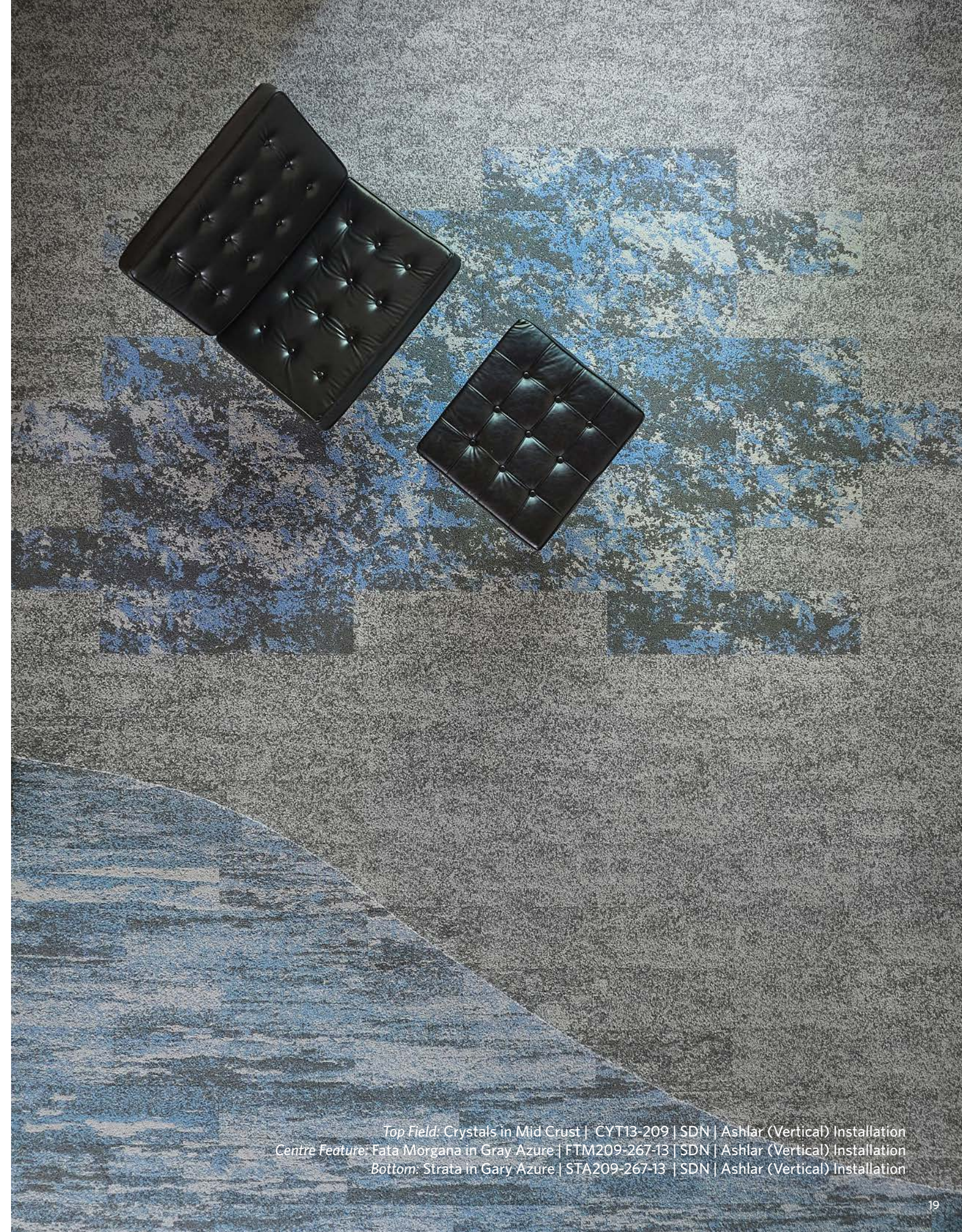
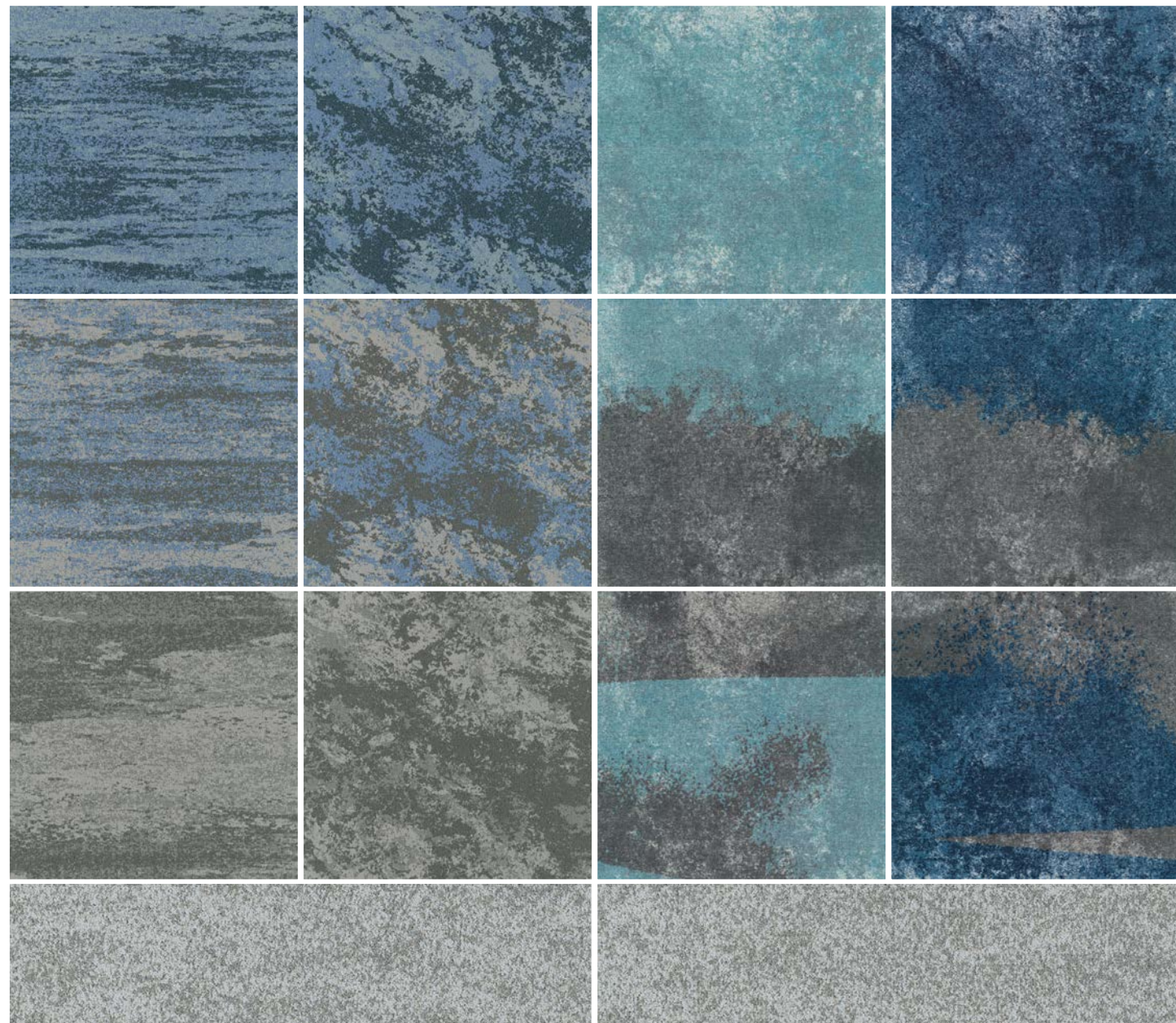


Random: Fata Morgana in DK Emerald (FTM240-275-274), Emerald (FTM213-240-275) and  
Emerald Beige (FTM217-240-235) | SDN | Ashlar (Vertical) Installation



S A L T L A K E

# AZURE | GRAY | CRUST



Top Field: Crystals in Mid Crust | CYT13-209 | SDN | Ashlar (Vertical) Installation  
 Centre Feature: Fata Morgana in Gray Azure | FTM209-267-13 | SDN | Ashlar (Vertical) Installation  
 Bottom: Strata in Gary Azure | STA209-267-13 | SDN | Ashlar (Vertical) Installation





*Left to Right: Vista in Mid Crust | VSA153-174| PrintWorks™ | Ashlar (Vertical) Installation  
Vista Transition in Mid Crust/LT Azure (VST153-174/138-140) and  
Vista in LT Azure (VST138-140)| PrintWorks™ | Monolithic Installation*





Strata in Mid Crust | STA13-209 | SDN | Monolithic Installation

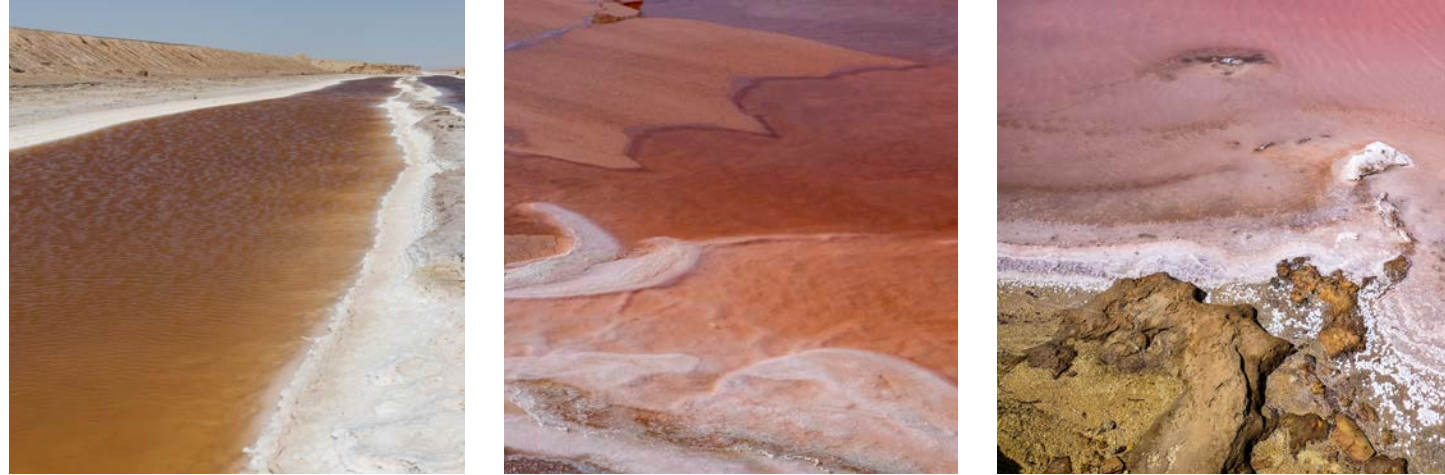


Left to Right: Vista in LT Crust | VSA209-215 | PrintWorks™ | Monolithic Installation and  
Crystals in Crust | CYT215-209 | SDN | Ashlar (Vertical) Installation



S A L T   L A K E

## CORAL | PINK



Left to Right: Vista in Pink Coral (VSA44-261),  
Vista Transition in Pink Coral/Sand (VST44-261/208-204) and  
Vista in Sand (VSA208-204) | PrintWorks™ | Monolithic Installation



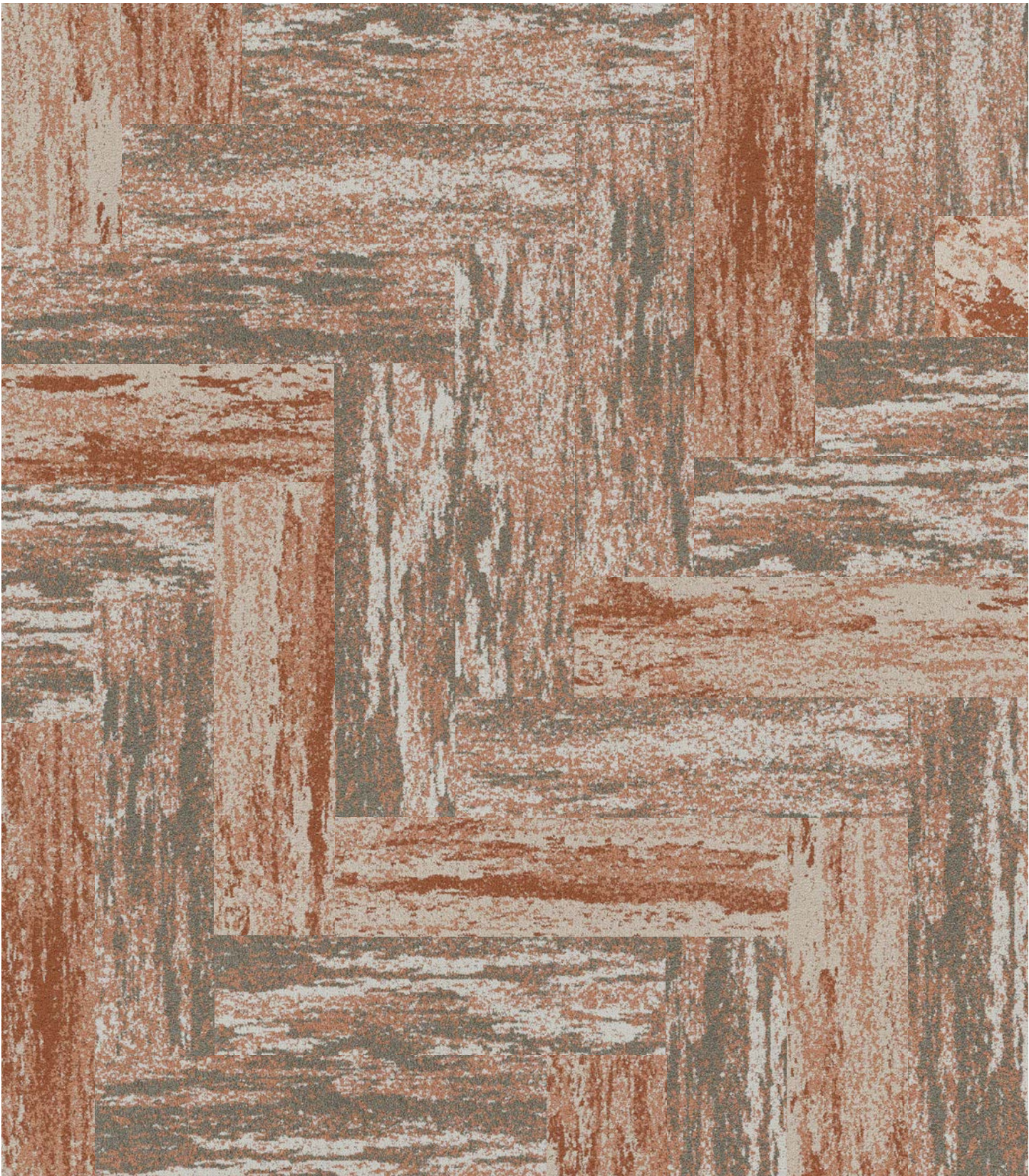


Echoes in Sand/Pink Coral | EHS208-204/44-261 | PrintWorks™ | Monolithic Installation



Echoes in Sand/Pink Coral | EHS208-204/44-261 | PrintWorks™ | Monolithic Installation





Strata in LT Coral | STA217-262-23 | SDN (Tile size: 25cm x 1m)  
Strata in Coral | FTM220-262-256 | SDN (Tile size: 25cm x 1m)



S A L T   L A K E  
CORAL | PINK

Strata in LT Coral (STA217-262-23) and Coral (STA220-262-256) | SDN | Herringbone Installation







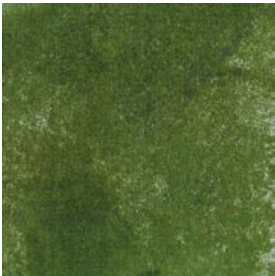
S A L T   L A K E

# PATTERN EXPLANATION



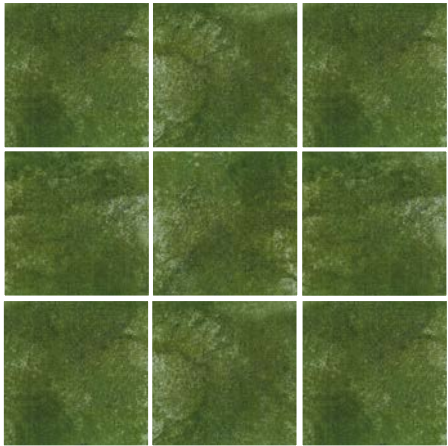
**VISTA**  
A sweeping view of an expansive landscape, Vista captures the boundless horizons and open spaces of the salt lakes. This design reflects the stillness and vastness of nature, offering a serene, calming presence in any space.

**VISTA**  
Available tile size: 1m x 1m



VSA203-202 | Emerald Green

9 Tile Layout



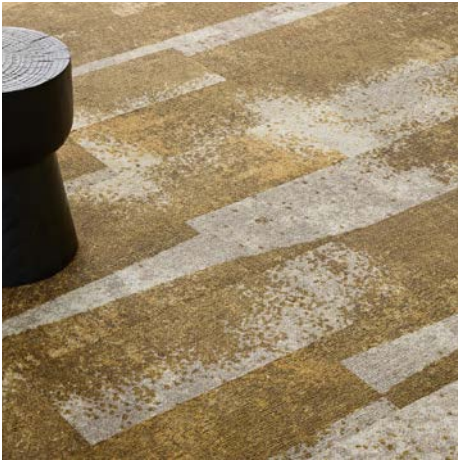
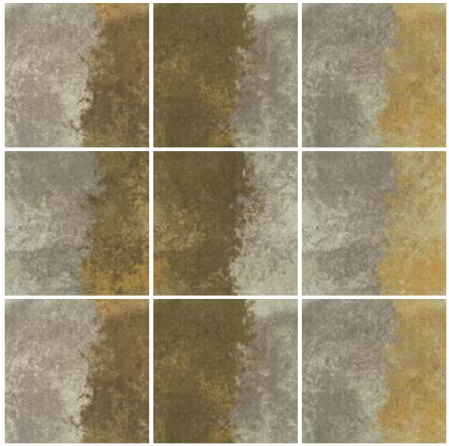
**VISTA TRANSITION**  
Inspired by the natural gradients found in landscapes, Vista Transition moves seamlessly from one colour to another, echoing the gentle shifts between salt beds and water. It's a design that creates flow, guiding the eye through subtle changes in pattern and colour.

**VISTA TRANSITION**  
Available tile size: 1m x 1m



VST208-204/13-57 | Sand/Dune

9 Tile Layout  
(With VST208-204/76-231 Sand | Bright Dune)



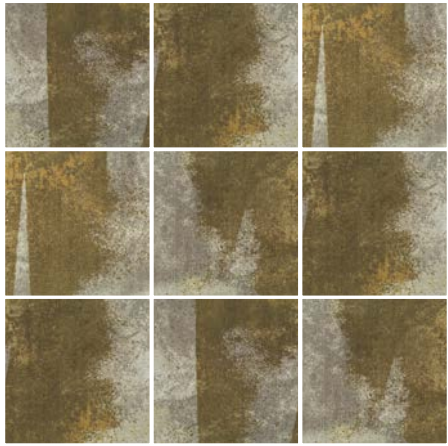
**ECHOES**  
Represents the lingering impressions of time - how nature's elements leave their mark on the earth. This design reflects the repetitive, rhythmic patterns of earth and water shaping the salt lake, suggesting an ongoing conversation between the land and the elements.

**ECHOES**  
Available tile size: 1m x 1m



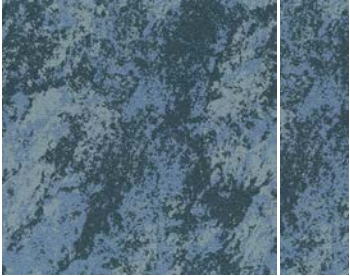
EHS208-204/13-57 | Sand/Dune

9 Tile Layout



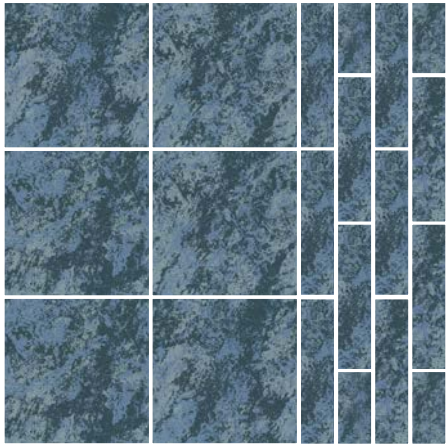
**FATA MORGANA**  
A phenomenon of optical illusions, Fata Morgana reflects the mirage-like qualities of the salt lakes, where reality blurs with imagination. This designs plays with light and shadow, creating a dreamlike, shifting effect that transforms a space with fluid, ethereal moment.

**FATA MORGANA**  
Available tile size: 1m x 1m / 25cm x 1m



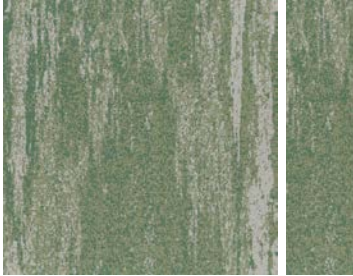
FTM247-267-264 | Azure

6 Tile + Plank Layout



**STRATA**  
Layers of earth and time inspire Strata. This design evokes the sedimentary layers visible in the salt lakes, where history is revealed through subtle changes in texture and tone. It brings a sense of depth and timeworn beauty into any space.

**STRATA**  
Available tile size: 1m x 1m / 25cm x 1m



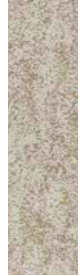
STA213-240-275 | Emerald

6 Tile + Plank Layout



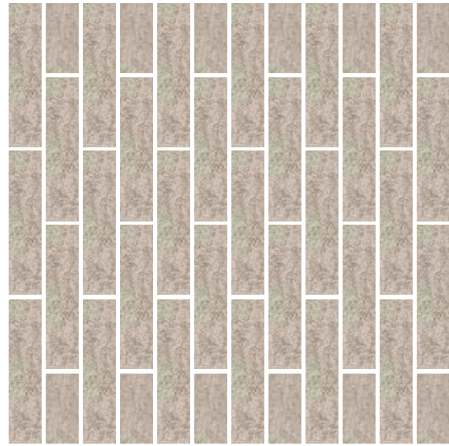
**CRYSTALS**  
The molecular reflective beauty of salt crystals forms the basis of Crystals. It captures the intricate, geometric structures found in salt formations, turning the natural process of crystallization into a refined, modern texture for interiors.

**CRYSTALS**  
Available tile size: 25cm x 1m



CYT220-214 | Sand

Plank Layout





PRINTWORKS™ COLOURWAY

VISTA

Available only in 1m x 1m



VSA208-204 Sand



VSA76-231 Bright Dune



VSA13-57 Dune



VSA44-261 Pink Coral



VSA33-146 Coral



VSA70-221 Dark Coral

VISTA TRANSITION

Available only in 1m x 1m



VST208-204/76-231  
Sand/Bright Dune



VST208-204/13-57  
Sand/Dune



VST208-204/44-261  
Sand/Pink Coral



VST208-204/33-146  
Sand/Coral



VST208-204/70-221  
Sand/Dark Coral



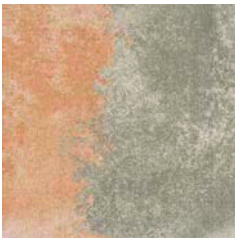
VST76-231/208-204  
Bright Dune/Sand



VST13-57/208-204  
Dune/Sand



VST44-261/208-204  
Pink Coral/Sand/



VST33-146/208-204  
Coral/Sand



VST70-221/208-204  
Dark Coral/Sand

ECHOES

Available only in 1m x 1m



EHS208-204/76-231  
Sand/Bright Dune



EHS208-204/13-57  
Sand/Dune



EHS208-204/44-261  
Sand/ Pink Coral



EHS208-204/33-146  
Sand/Coral



EHS208-204/70-221  
Sand/Dark Coral

VISTA

Available only in 1m x 1m



VSA209-215 LT Crust



VSA180-153 Crust



VSA153-174 Mid Crust



VSA203-202 Emerald Green



VSA162-201 Emerald



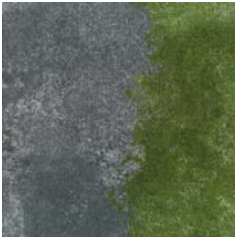
VSA138-140 LT Azure



VSA157-228 Azure

VISTA TRANSITION

Available only in 1m x 1m



VST153-174/203-202  
Mid Crust/Emerald Green



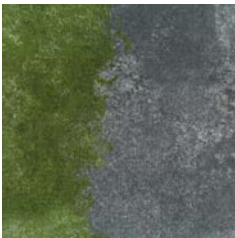
VST153-174/162-201  
Mid Crust/Emerald



VST153-174/138-140  
Mid Crust/LT Azure



VST153-174/157-228  
Mid Crust/Azure



VST203-202/153-174  
Emerald Green/Mid Crust



VST162-201/153-174  
Emerald/Mid Crust



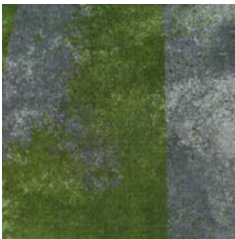
VST138-140/153-174  
LT Azure/Mid Crust



VST157-228/153-174  
Azure/Mid Crust

ECHOES

Available only in 1m x 1m



EHS153-174/203-202  
Mid Crust/Emerald Green



EHS153-174/162-201  
Mid Crust/Emerald



EHS153-174/138-140  
Mid Crust/LT Azure



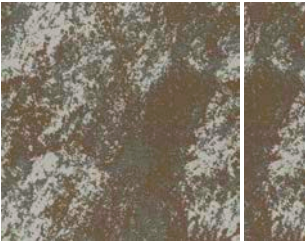
EHS153-174/157-228  
Mid Crust/Azure



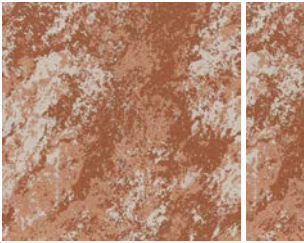
# SDN COLOURWAY

## FATA MORGANA

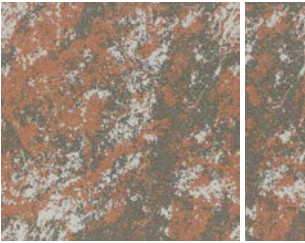
Available in 1m x 1m and 25cm x 1m



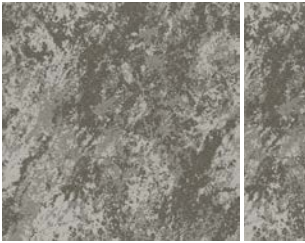
FTM217-224-234  
Brown Coral



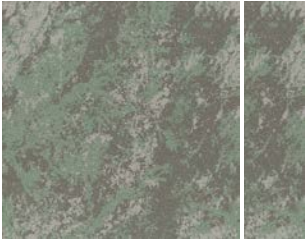
FTM220-262-256  
Coral



FTM217-262-234  
LT Coral



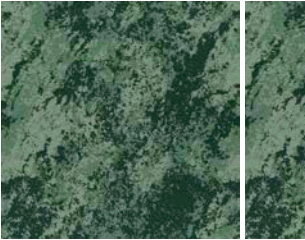
FTM217-235  
Beige



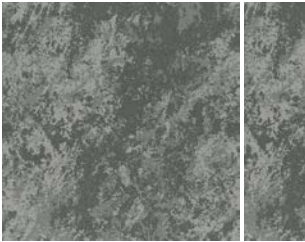
FTM217-240-235  
Emerald Beige



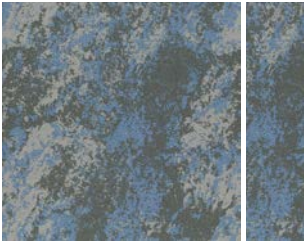
FTM213-240-275  
Emerald



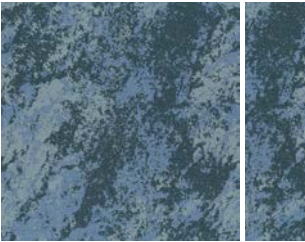
FTM240-275-274  
DK Emerald



FTM13-209  
Mid Crust



FTM209-267-13  
Gray Azure



FTM247-267-264  
Azure

## CRYSTALS

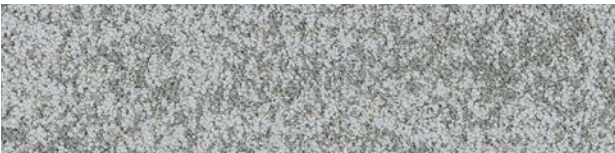
Available only in 25cm x 1m



CYT220-214  
Sand



CYT217-235  
Beige



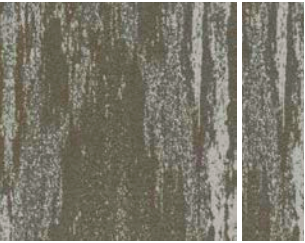
CYT215-209  
Crust



CYT13-209  
Mid Crust

## STRATA

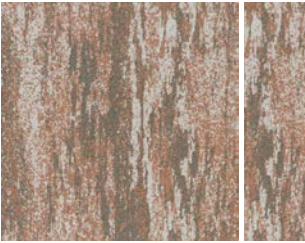
Available in 1m x 1m and 25cm x 1m



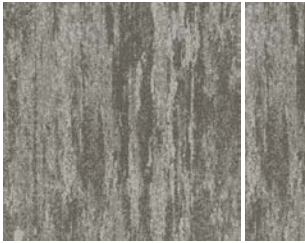
STA217-224-234  
Brown Coral



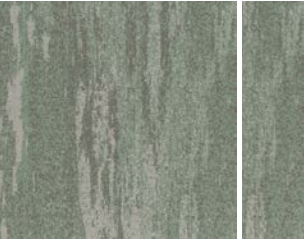
STA220-262-256  
Coral



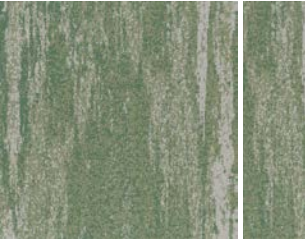
STA217-262-234  
LT Coral



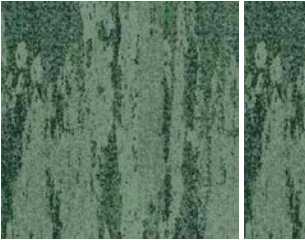
STA217-235  
Beige



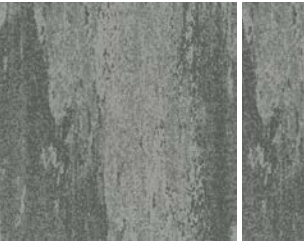
STA217-240-235  
Emerald Beige



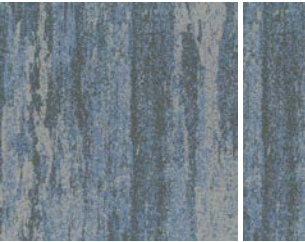
STA213-240-275  
Emerald



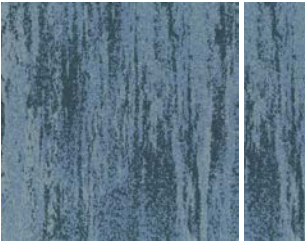
STA240-275-274  
DK Emerald



STA13-209  
Mid Crust



STA209-267-13  
Gray Azure



STA247-267-264  
Azure



S A L T   L A K E

# INSTALLATION GUIDE



↓ #1	↓ #2	↓ #1	↓ #1	↓ #2	↓ #2
↓ #3	↓ #4	↓ #3	↓ #3	↓ #4	↓ #4

VISTA  
VSA208-204  
Sand

VISTA TRANSITION  
VST208-204/76-231  
Sand/Bright Dune

VISTA  
VSA76-231  
Bright Dune

VISTA TRANSITION  
VST76-231/208-204  
Bright Dune/Sand

↓ ↓  
↓ ↓

#1 #2  
#3 #4

Follow the numbered sequence and directional arrows to achieve a seamless design.

↓ ↓  
↓ ↓

#3 #1  
#4 #2

Follow a random sequence and directional arrows to achieve a random design.

## N/XT LIFE™

### CIRCULARITY PROGRAM

Milliken leads the Circular Economy charge with 100% recyclable WellBAC™ products.

We incorporate recycled materials, minimise raw material usage, and employ value-engineered constructions to create visually appealing, eco-conscious designs.





# It takes humans to protect humanity.

Make changes to end climate change.  
Design a better future.

**M/PACT™**  
CARBON NEUTRAL PROGRAM

## CLIMATE CHANGE IS ONE OF THE GREATEST THREATS FACING HUMANITY, AND WE ARE ALL RESPONSIBLE.

That's why Milliken Floor Covering launched the **M/PACT™** carbon neutral program. Today, our carpet, LVT and entrance flooring tiles are carbon neutral everywhere in the world.

M/PACT carbon neutral products offset the raw materials and manufacturing carbon footprint\* by using 3rd party Verified Carbon Standard Credits that support renewable energy and carbon reduction technologies to help fight climate change. When you choose M/PACT products, you can be sure your choice is carbon neutral.



SCAN TO LEARN MORE ABOUT  
OUR CARBON NEUTRAL PROGRAM  
**M/PACT™**

**M/PACT™**  
CARBON NEUTRAL PROGRAM

### Investment

Today we invest through renewable energy credits, verified carbon offsets, and installing solar power at our Sydney manufacturing facility. We also continue to invest in more efficient manufacturing technologies and in local supply chains.

### Materials

We believe material health is essential to enable circularity. The use of materials that don't contain harmful chemicals provides a critical pathway to end-of-life product recycling. Our carpet, LVT and entrance flooring tiles are recyclable.

### Dematerialisation

We continue to support the advancement of a circular economy – one that uses less new raw materials and creates less waste. For example, we have created a portfolio of carpet tiles that use less raw material, reducing embodied carbon. We will continue to challenge ourselves and our supply chains to extend innovation in new technologies for dematerialisation.

### Manufacturing

We leverage our global manufacturing and local supply chains to minimise carbon emissions. More efficient manufacturing and distribution not only reduces our global carbon footprint, it also has a direct positive impact on the communities we call home.

### Wellness

Climate change directly impacts human health and wellness. Pollution. Natural disasters. Droughts. As a founding member of the Well Living Lab and a Well Portfolio Member, we aspire to design products that enhance well-being and quality of life of indoor spaces.

### We will continue to do more to lower our carbon footprint.

The M/PACT™ program is long-term, because the fight to stop climate change will be a long one. As a global manufacturing company, we set 2025 goals that align with the United Nations Sustainable Development Goals. We push ourselves to meet our targets on Planet, Product, and People, including a 25% reduction in indexed greenhouse emissions by 2025. These 2025 goals are a benchmark for us to achieve more, faster. We encourage you to specify our carbon neutral products for all of your projects to ensure the climate change journey continues.

Together, we can make a positive **M/PACT™** on the world for generations.

\* As calculated and verified scope A1-3 GWP through a ISO14025/ISO14040 compliant LCA and published in third party EPDs.

*Milliken™*





# WellBAC®

Milliken WellBAC® open cell foam cushion provides superior durability, appearance retention and cushioning.



**UNDERFOOT COMFORT**  
Up to 24% greater underfoot comfort for enhanced ergonomics whilst standing.



**ACOUSTIC VALUES**  
Up to 50% improved acoustics for quieter, more productive spaces.



**INDOOR AIR QUALITY**  
Enhanced Indoor Air Quality (Green Label Plus™ Certified Low VOC) for improved occupant and installer well-being.



**MOISTURE MITIGATION**  
Industry leading moisture management with non-reactive backings to enhance the installation process, saving time and money.



**MATERIAL HEALTH**  
3rd party Verified Declare™ Red-List Free products for occupant and installer well-being.



**CIRCULARITY**  
100% Recyclable through the Milliken N/XT LIFE™ circularity program for both installation waste and end-of-life.

## FACE FABRIC

Patterns and structures made up of nylon yarns with our state of the art tufting technology.

## PRIMARY BACKING

The face yarn is tufted through a high quality non-woven textile. The structure of the textile holds the yarn in place acting as the primary backing.

## PRECOAT

The precoat layer locks the tufted yarns in the primary backing to ensure good tuft bind strength between the yarns and the backing.

## FIBERGLASS

A high quality fiberglass layer is embedded in the polyolefin compound to ensure dimensional stability of the tile.

## SECONDARY BACKING

Proprietary Polyolefin compound layer formulated by Milliken R&D scientists to create a durable and stable tile. Our formulation does not contain PVC or plasticizers.

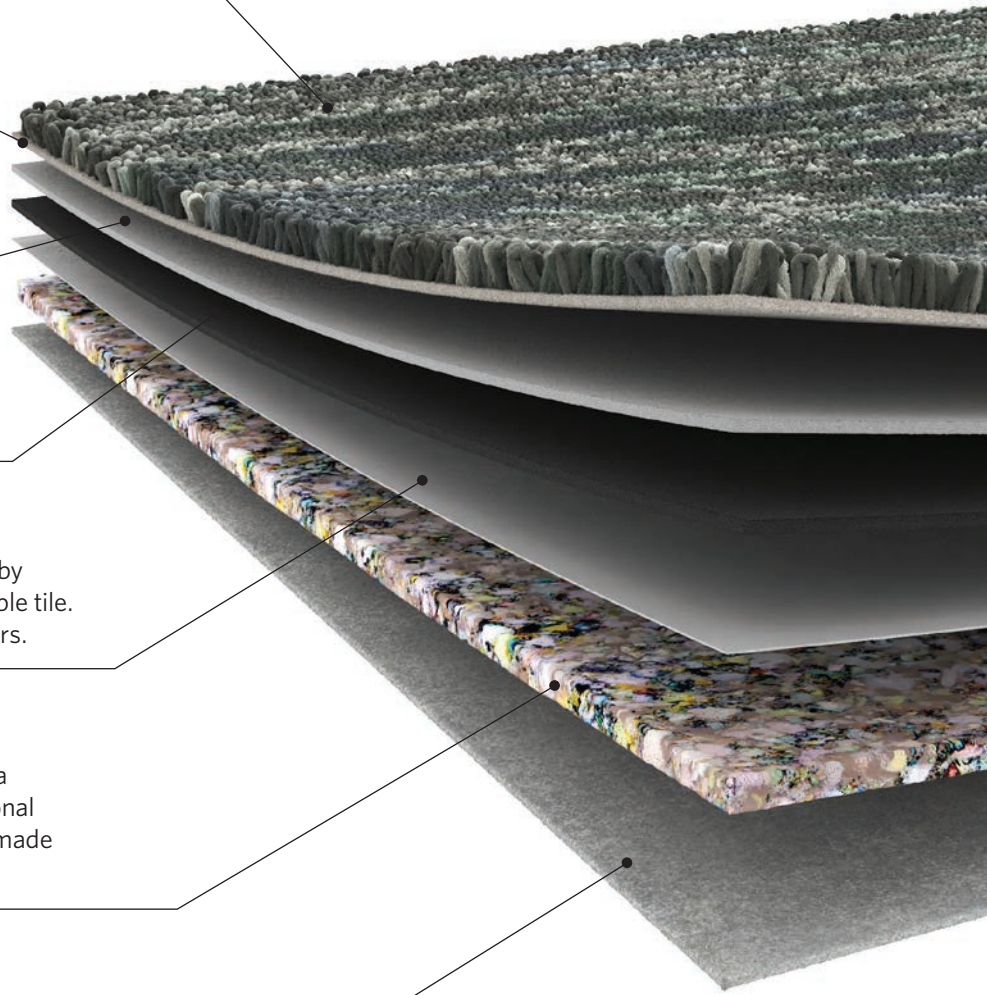
## PREMIUM CUSHION

WellBAC® Comfort and Comfort Plus incorporate a premium cushion layer, designed to provide additional health and wellness benefits. Milliken's cushion is made from recycled polyurethane foam.

## FELT BACK

A protective non-woven textile layer provides a breathable non-reactive finish. It enhances health and wellness.

**Milliken's standard cushion backing system — offering enhanced underfoot comfort, acoustic and wear performance.**





# SALT LAKE

PrintWorks™: Vitsa | Vista Transition | Echoes  
SDN: Fata Morgana | Strata | Crystals



When you choose M/PACT™ products, you can be sure your choice is carbon neutral. M/PACT™ carbon neutral products offset the raw materials and manufacturing carbon footprint\* by using 3rd party Verified Carbon Standard Credits that support renewable energy and carbon reduction technologies to help fight climate change.  
\*as calculated and verified through a ISO14025/ISO14040 compliant LCA and published in third party EPD.

Standard Backing	Cushion Backing - WellBAC® Comfort (PVC FREE) (Non-Reactive Cushion Backing)
Acoustic Value	Noise Reduction Coefficient - NRC ≥ 0.25 Impact Sound Pressure Level - Ln,w ≤ 47dB
Concrete Slab Moisture Mitigation	Site-Related Solutions (SRS): Milliken cushion-backed tile + Non-Reactive Standard Adhesive means installation 45 days after a new concrete pour, fully warranted no moisture testing required. Refer to www.millikenfloors.com.au

# SALT LAKE

VISTA / VISTA TRANSITION / ECHOES  
SPECIFICATION - PRINTWORKS™

<b>Construction:</b> Tufted, Textured Loop	<b>Stitches Per Inch:</b> 9.2	<b>Nominal Total Thickness:</b> 8.0mm	<b>Static Electricity (AATCC-134) 20% R.H., 70°F:</b> ≤ 3.5KV
<b>Tile Size:</b> 100cm x 100cm	<b>Tufts:</b> 110/in² (1,710/100cm²)	<b>Nominal Pile Thickness:</b> 2.0mm	<b>Indoor Air Quality - CRI Green Label Plus™:</b> ≤ 0.5mg/m³ (GLP0793)
<b>Yarn Type:</b> Milliken Certified 100% Nylon	<b>Total Pile Mass:</b> 15 oz/yd² (509g/m²)	<b>Nominal Total Weight:</b> 92.9 oz/yd² (3,150g/m²)	<b>VOC:</b> Pass (ISO 10580:2010)
<b>Stain Resist   Soil Release:</b> StainSmart®	<b>Recyclable:</b> 100%	<b>Flammability (Radiant Panel Test):</b> CHF/CRF = 6.5kW/m², Smoke Value = 111%.min	<b>ACCS Grading:</b> CEHD 4*, REHD2 6*, Suitable for Stairs
<b>Dye Method:</b> PrintWorks™	<b>Recycled Content by Total Weight:</b> 46%	<b>Lightfastness (AATCC 16E):</b> ≥ 4.0 at 80 Hours	
<b>Gauge</b> 1/12			

# SALT LAKE

FATA MORGANA / STRATA / CRYSTALS  
SPECIFICATION - SOLUTION DYED NYLON

<b>Construction:</b> Tufted, Textured Loop	<b>Embodied Carbon:</b> 4.7 kg/m² co² E	<b>Nominal Total Thickness:</b> 9.3mm	<b>Static Electricity (AATCC-134) 20% R.H., 70°F:</b> ≤ 3.5KV
<b>Tile Size:</b> 25cm x 100cm 100cm x 100cm	<b>Gauge</b> 1/12	<b>Nominal Pile Thickness:</b> 2.8mm	<b>Indoor Air Quality - CRI Green Label Plus™:</b> ≤ 0.5mg/m³ (GLP7205)
<b>Yarn Type:</b> ECONYL® 100% Solution Dyed Nylon	<b>Stitches Per Inch:</b> 10.4	<b>Nominal Total Weight:</b> 119.0 oz/yd² (4,032 g/m²)	<b>VOC:</b> Pass (ISO 10580:2010)
<b>Stain Resist   Soil Release:</b> Built-In Protection	<b>Tufts:</b> 125/in² (1,940/100cm²)	<b>Flammability (Radiant Panel Test):</b> CHF/CRF = 4.2kW/m², Smoke Value = 209%.min	<b>ACCS Grading:</b> CEHD 4*, REHD2 (S)6*, Suitable for Stairs
<b>Dye Method:</b> Solution Dyed	<b>Recyclable:</b> 100%	<b>Lightfastness (AATCC 16E):</b> ≥ 4.0 at 80 Hours	
	<b>Recycled Content by Total Weight:</b> 58.6%		

The recognised Product Certification Initiatives in the Green Star rating tools that contribute to the responsible product value of Milliken carpet tiles are as listed. The Green Building Council of Australia recognises Responsible Products that may contribute to a Green Star rating through its Responsible Credits (rpv).	1. ECS Carpet Standard v2.2 2. Cradle to Cradle 3. Declare 2.0 - Red List Free 4. Science-Based Targets Initiative (SBTi)	GBCA Responsible Product Value 30 rpv
--	--	---

<b>Recommended Installation Method(s):</b> <i>PrintWorks™ (100cm x 100cm)</i> Vista, Vista Transition, Echoes: Monolithic  Vista and Echoes: Random  <i>SDN (25cm x 100cm)</i> Fata Morgana, Strata, Crystals: All Planks Method  <i>SDN (100cm x 100cm)</i> Fata Morgana, Strata, Crystals: Monolithic	<b>Recommended Area of Use:</b> Commercial Extra Heavy Duty  <b>Warranties:</b> 20-year Wear Warranty  20-year Anti-Static Warranty  20-year Dimensional Stability Warranty  20-year Castor Chair Wear Warranty	<b>Environmental:</b> ECS Grading – Level 4 + (Core + No Chemicals of Concern + EPD + Carbon Neutral)  Declare – RED LIST FREE  Cradle to Cradle – Silver  M/PACT™ Carbon Neutral Program  Environmental Product Declaration (EPD)  Health Product Declaration (HPD)  Works With WELL
---	---	---

Vista in Emerald (VSA162-201 ) and Mid Crust (VSA153-174),  
Vista Transition in Mid Crust/Emerald (VST153-174/162-201) and  
Echoes in Mid Crust/Emerald (EHS153-174/162-201) | PrintWorks™ | Custom Installation





Echoes in Sand/Pink Coral | EHS208-204/44-261 | PrintWorks™ | Monolithic Installation



**Declare.**



Australia:  
Toll Free: 1800 668 372  
New Zealand:  
Toll Free: 0800 668 372  
[www.millikenfloors.com.au](http://www.millikenfloors.com.au)  
(Australia & New Zealand)

This WellBAC® cushion-back carpet tile product is covered by one or more patents, published applications and/ or patents pending. Specifications are subject to normal manufacturing tolerances and may be changed without prior notice. Copies of actual test results are available upon request.

© 2025 Milliken & Company | Design © Milliken & Company

*Milliken*™