

原色空间

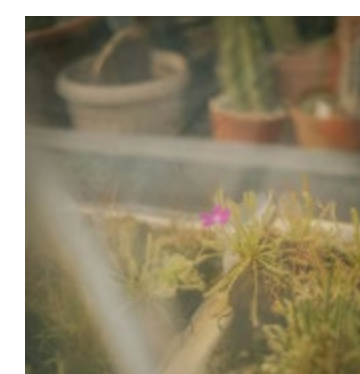
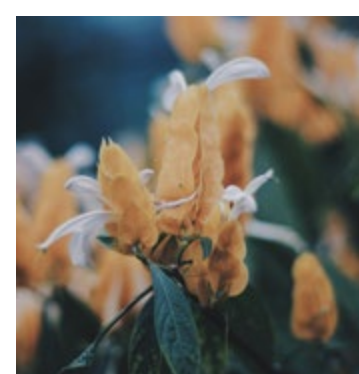
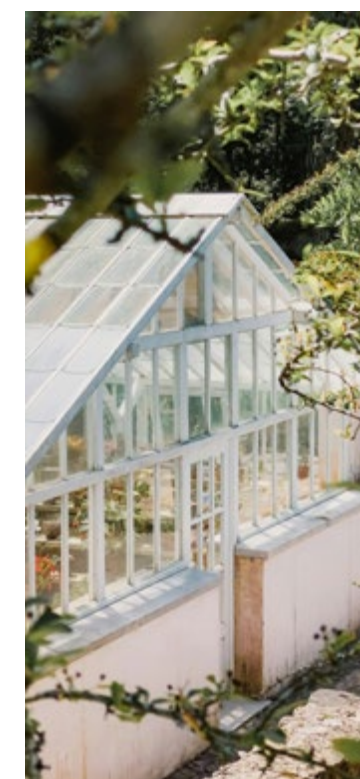
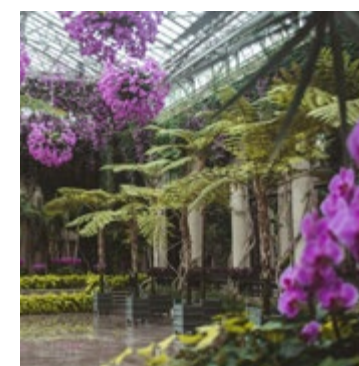
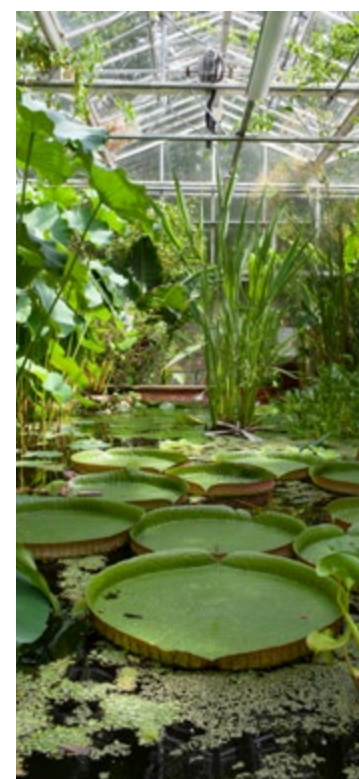
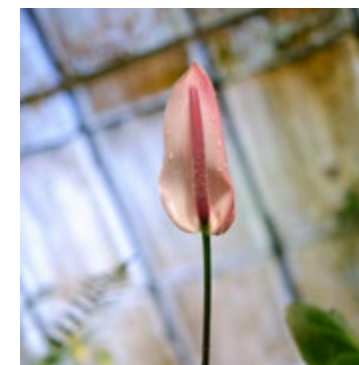
EDEN

Milliken®

Introducing the 原色空间 *Glasshouse*

灵感源自温室中充满活力的生命景象，原色空间系列从阳光照耀下的繁茂绿叶与盛开的植物中汲取丰富的色彩。层叠的绿色、花卉色调以及温暖的光感色彩共同构成了一个既充满动感又保持平衡的色彩体系，为室内空间带来活力与层次。

以功能性为核心设计，这一模块化系列提供灵活多样的应用方式——既可以作为大胆的整体铺陈，也可用于界定动线，或在不同区域之间创造自然流畅的过渡。原色空间系列将富有表现力的色彩与实用性能相结合，为注重创意与功能并重的空间提供一个多变且当代的系统解决方案。



GLASHOUSE | © 2026 MILLIKEN & COMPANY



(border) Eden in Exotic, (field) Eden in Trunk, Poppy Seed, Sandstone and Sunflower;
Fast Lane in Sandstone with Gold, On the Tracks Collection, monolithic installation.



(meeting room) Woven Color in Undertone with Sage, Warp & Weft Collection,
(workstation) Eden in Exotic, monolithic installation.



GLAS HOUSE | 2016 MILLIKEN & COMPANY

Eden in Hearts, Clay Pot, Terracotta and Sandstone, monolithic installation.

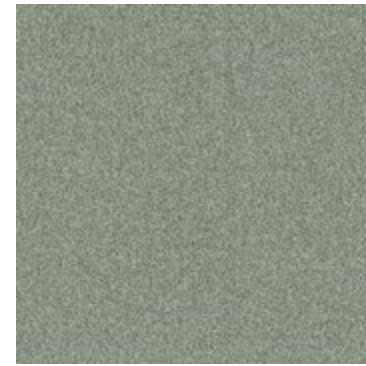
COLORLINE | EDEN



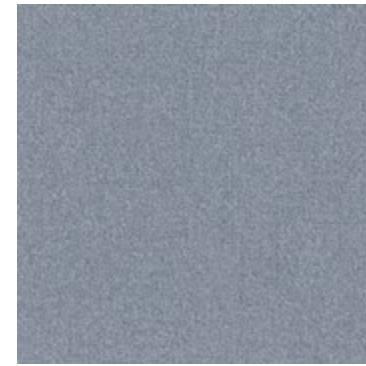
EDN261 Blush



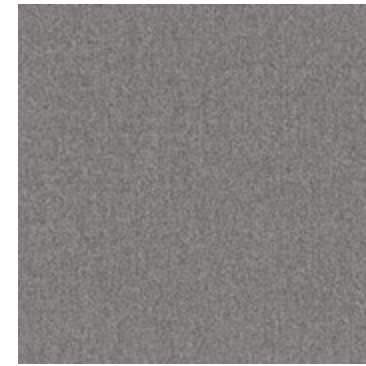
EDN236 Terracotta



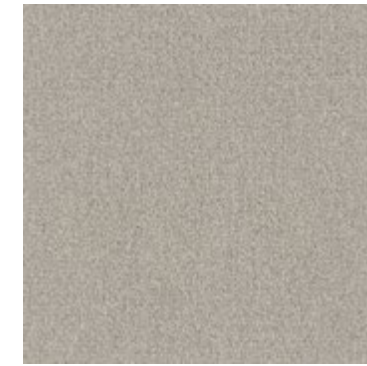
EDN241 Bud



EDN248 Manor Blue



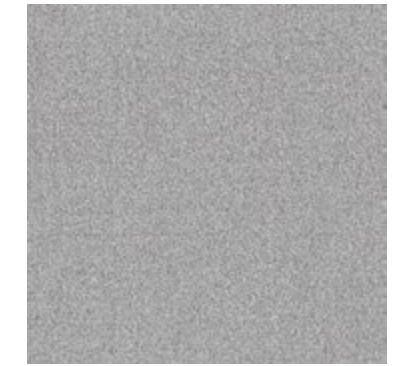
EDN6 Moonshine



EDN208 Sandstone



EDN251 Sunroom



EDN209 Cold Frame



EDN60 Hearts



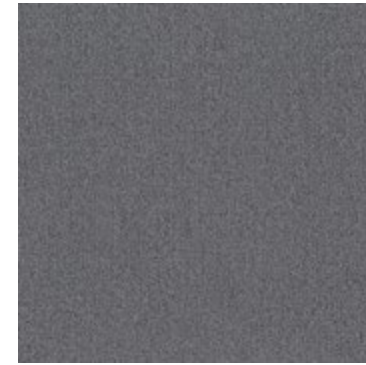
EDN262 Clay Pot



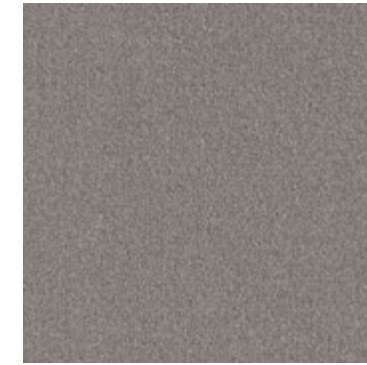
EDN203 Grow



EDN197 Island Blue



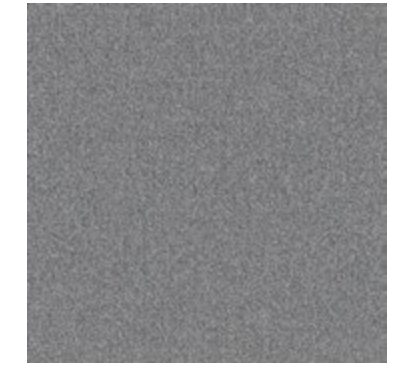
EDN13 Gateway



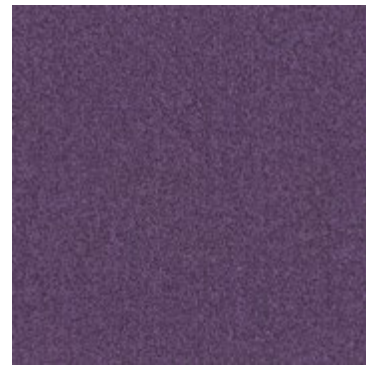
EDN234 Frame



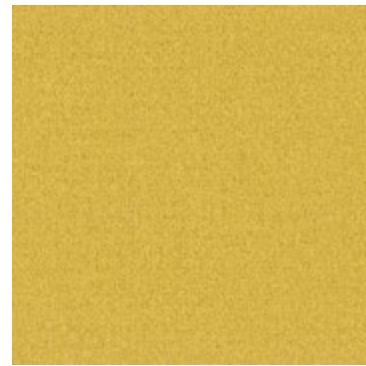
EDN48 Exotic



EDN180 Haven



EDN195 Amethyst



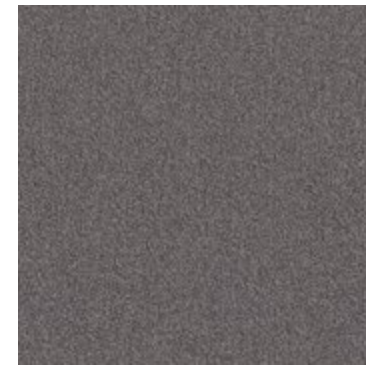
EDN188 Sunflower



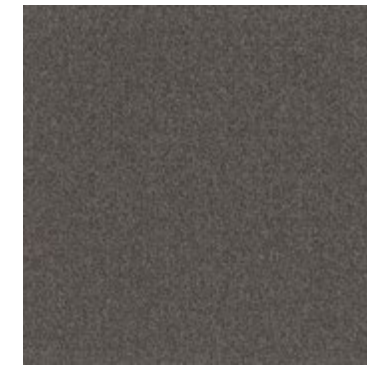
EDN230 Thyme



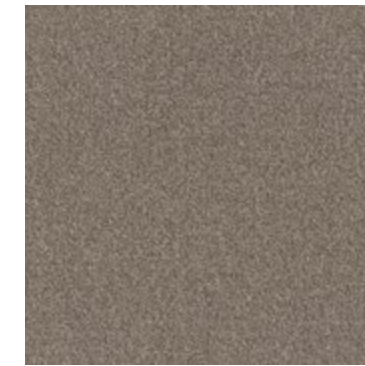
EDN196 Stardust



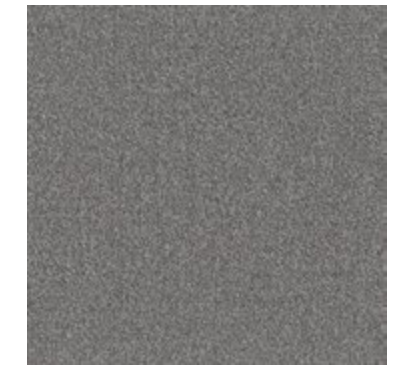
EDN174 Powder Steel



EDN67 Poppy Seed



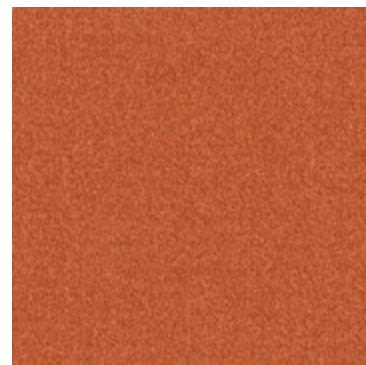
EDN235 Sanctuary



EDN25 Oasis



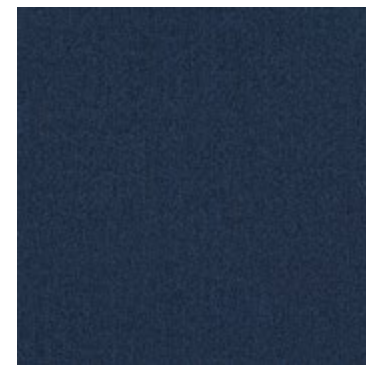
EDN232 Berry



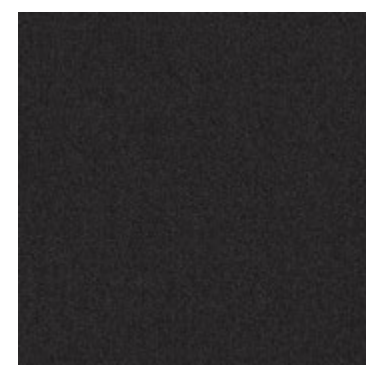
EDN128 Paradise



EDN274 Aventurine



EDN228 Deep Indigo



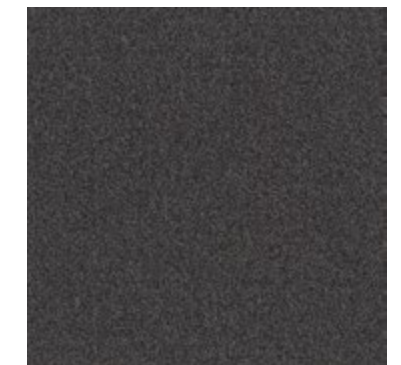
EDN27 Space



EDN133 Dark Bronze



EDN59 Trunk

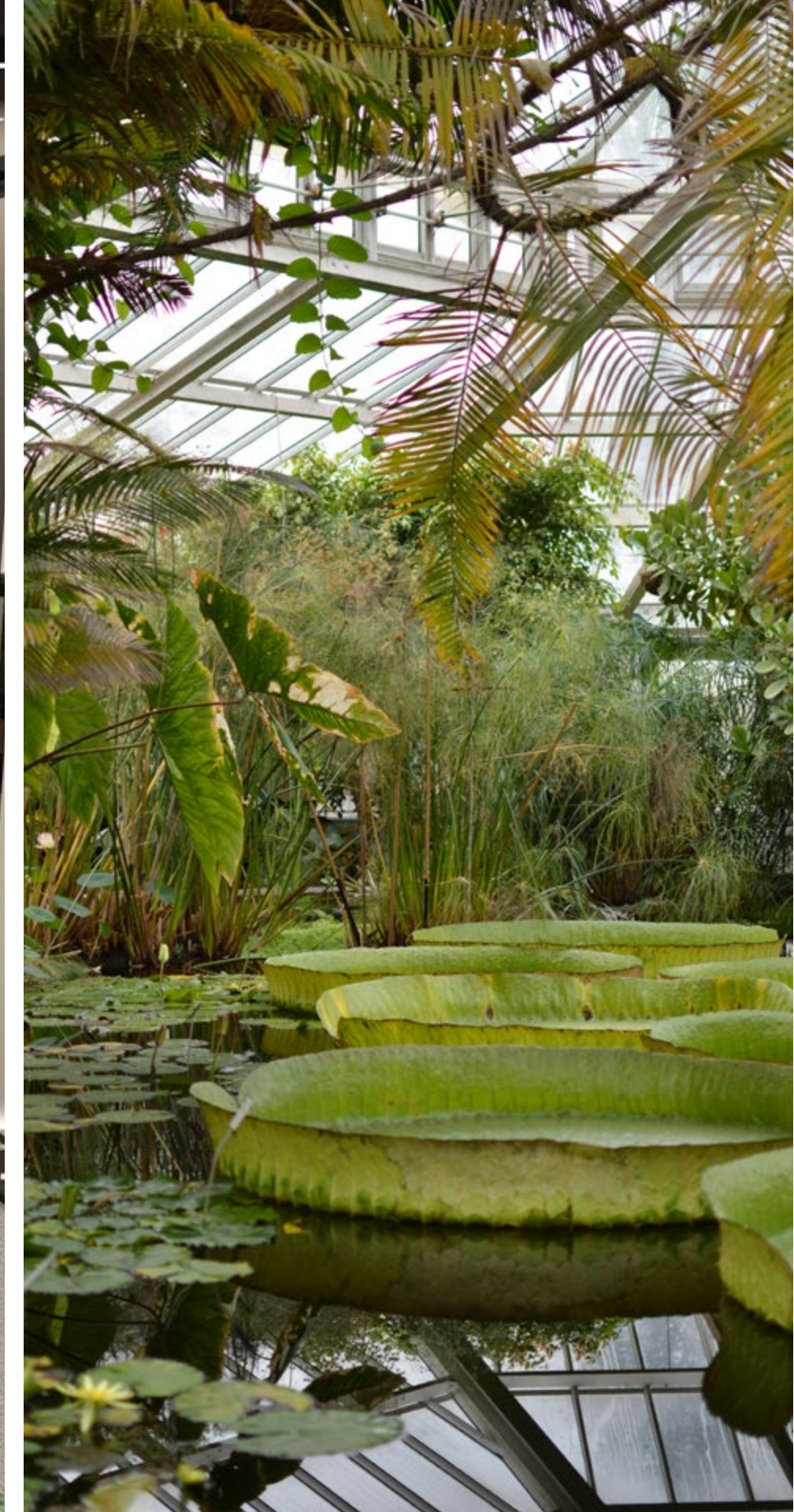


EDN79 Rescue



2026 MILLIKEN & COMPANY

(meeting room) Eden in Clay Pot,
(corridor) Threaded Layer in Baked Beige with Brick, Warp & Weft Collection, monolithic installation.
(coordination area) Raw Wood in Earthy, Repurposed Materials Collection, ashlar installation.



Eden in Exotic, (corridor) Woven Color in Undertone with Sage, Warp & Weft Collection, monolithic installation.

GLASSHOUSE | 4056 MILLIKEN & COMPANY



GLASSHOUSE | © 2026 MILLIKEN & COMPANY

(from left to right) Eden in Grow, Network in Chrome, Screenplay Collection, Eden in Thyme, monolithic installation.



© 2026 MILLER LITTON COMPANY

(field) Eden in Aventurine, Space and Moonshine; Frames in Deep Teal, Screenplay Collection.
(workstation and corridor) Eden in Moonshine, monolithic installation



GLASSHOUSE | © 2026 MULLEN + COMPANY

(field) Eden in Exotic, Sanctuary and Amethyst, monolithic installation.
(border) Woven Stone in Fossil, Repurposed Materials Collection, ashlar installation.





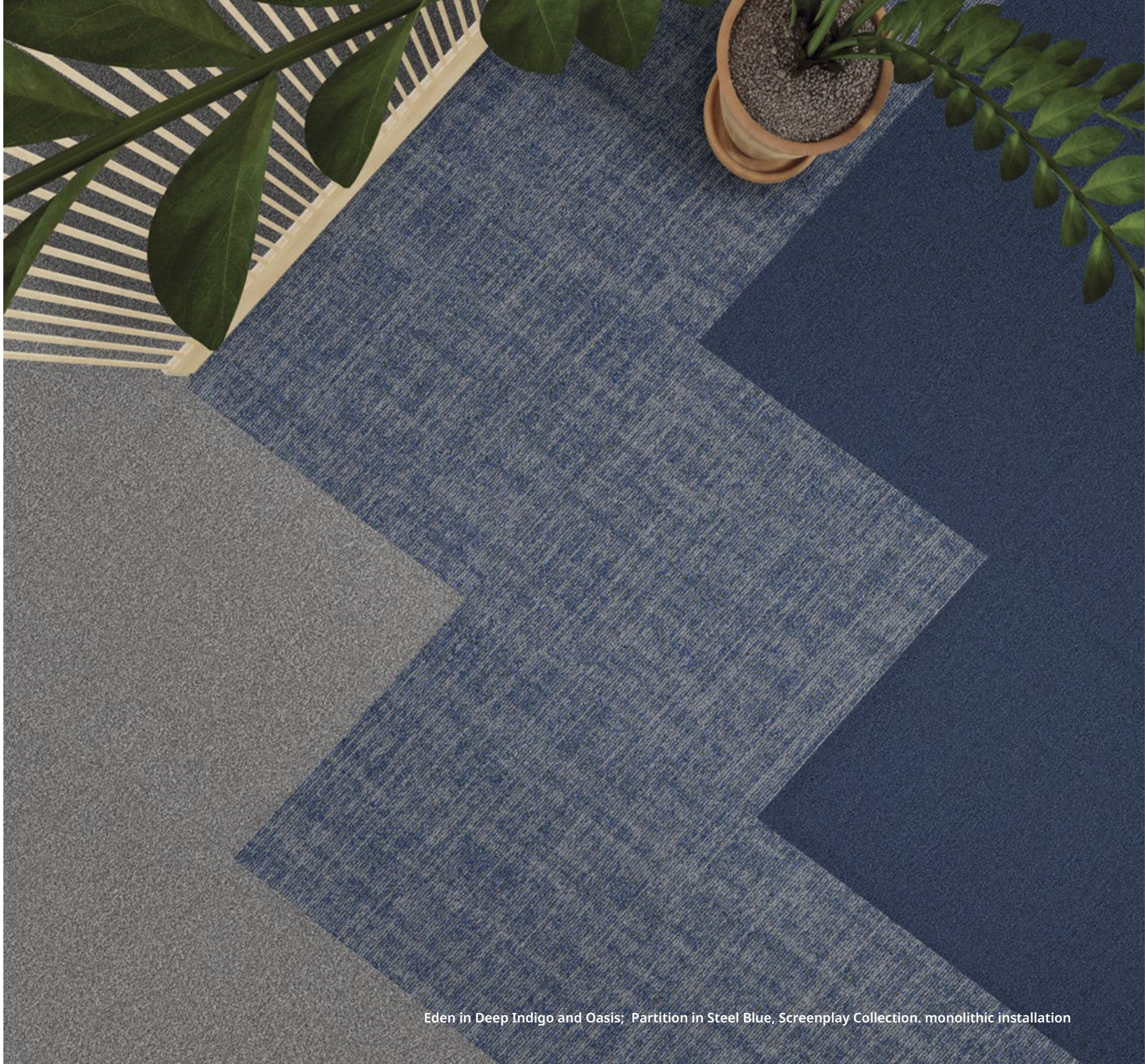
GLASSHOUSE | © 2026 MILLIKEN & COMPANY

Eden in Stardust, Terracotta, Grow and Manor Blue, monolithic installation



GLASSHOUSE | © SCOTT MILLER & COMPANY

Eden in Paradise and Island Blue, monolithic installation



Eden in Deep Indigo and Oasis; Partition in Steel Blue, Screenplay Collection. monolithic installation

M/PACT™

CARBON OFFSET PROGRAM

气候变化是人类面临的最大威胁之一。

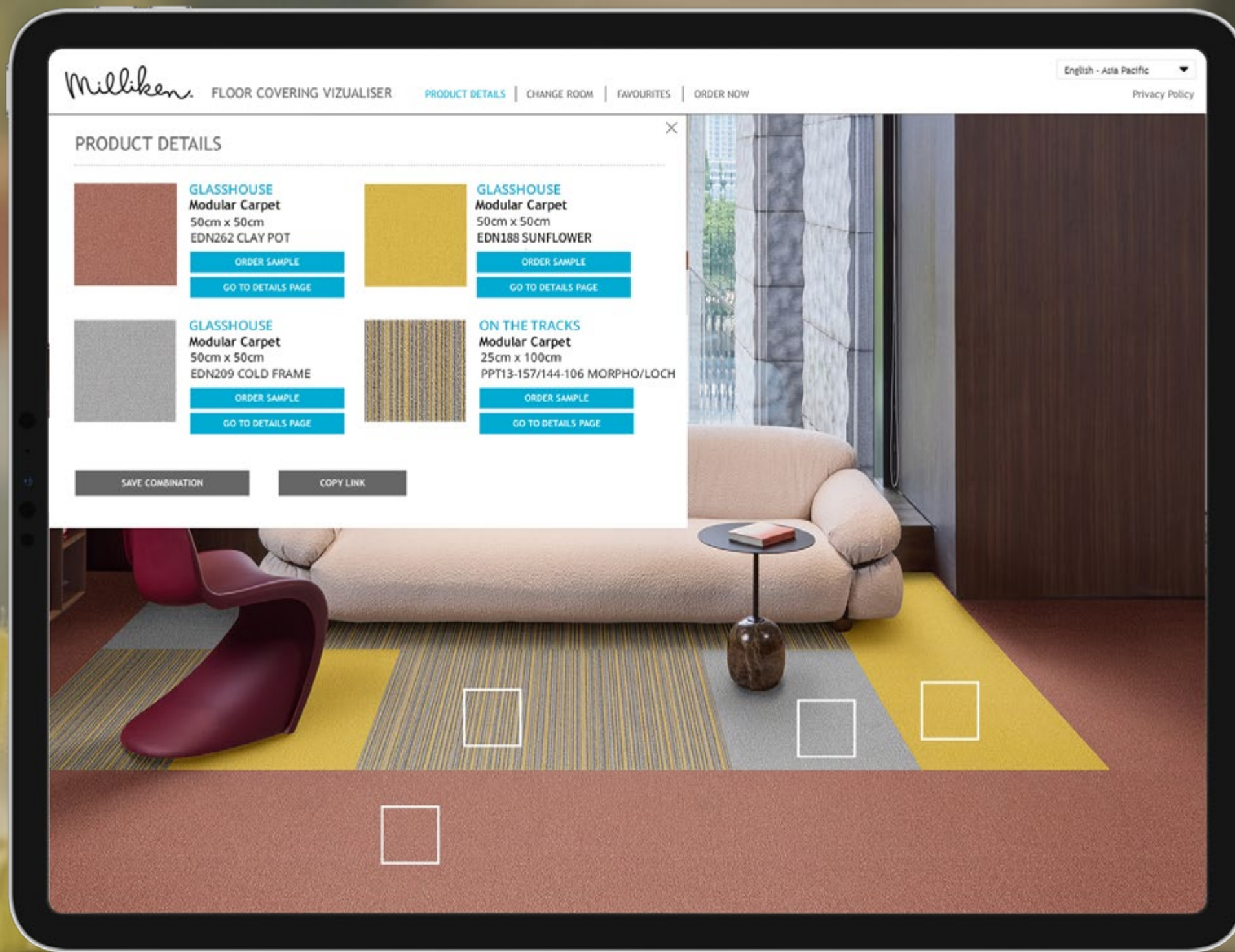
今天, 我们所有的地毯、LVT和地材产品在全球各地都是碳中和的产品。我们邀请您了解我们已经做出的重大改变, 然后让我们一起规划一个更美好的未来。



Eden in Deep Indigo and Stardust, Partition in Steel Blue, Screenplay Collection.
(corridor) Eden in Oasis, monolithic installation

使用 原色空间系列 在您的空间里

使用在线渲染工具查看质感系列的不同布局。
只需上传一张你的空间的图片，
让在线渲染工具来做剩下的事情。





原色空间 GLASSHOUSE

Eden

SPECIFICATION

Construction - Tufted, Textured Loop

Tile Size - 50cm X 50cm

Face Fiber - 100% Milliken Certified Nylon

Dye Method - Millitron®

Standard Backing - PVC-Free WellBAC® Function
Available with TractionBack®

Nominal Total Thickness - 6.5 mm ±10%

Flammability - ≥ 0.45 (Class I)

Texture Appearance Retention Rating (TARR) - Heavy

Indoor Air Quality - CRI Green Label Plus™ - Pass

技术指标

结构 - 簇绒织造圈绒结构

产品尺寸 - 50厘米 X 50厘米

表层纤维 - 100% 美利肯认证尼龙

染色技术 - Millitron® 数码针染技术

标准底垫 - 不含PVC之 WellBAC® Function (不含PVC)
可选装TractionBack® 免胶

额定总厚度 - 6.5 毫米±10%

阻燃性 - ≥ 0.45 (一级)

外观保持等级 (TARR) - 频繁商业使用

室内空气质量 CRI Green Label Plus™ - 通过

Installation Method

安装方式：



Monolithic Quarter Trun Ashlar V.Ashlar Random

TractionBack®

Simplify your modular installation with Milliken's patented TractionBack®, an innovative backing system that is faster, more cost efficient, and environmentally superior to wet adhesives and peel-and-stick carpet tile.



Follow us on social media:

WeChat

Instagram

Website