



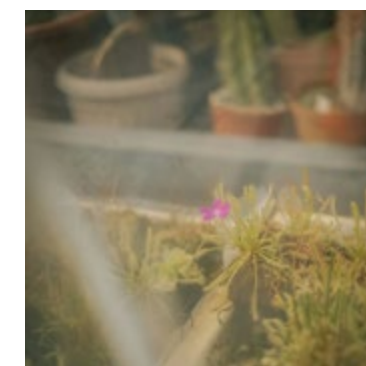
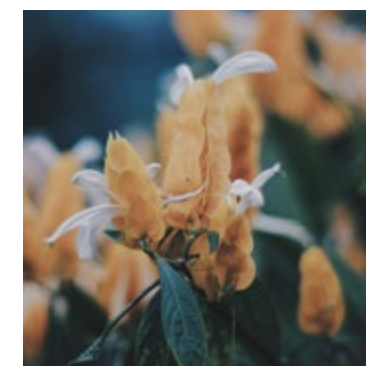
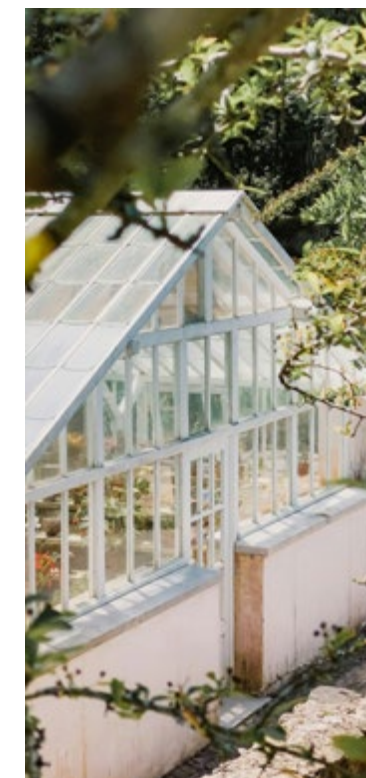
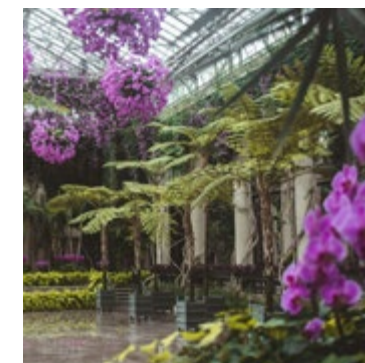
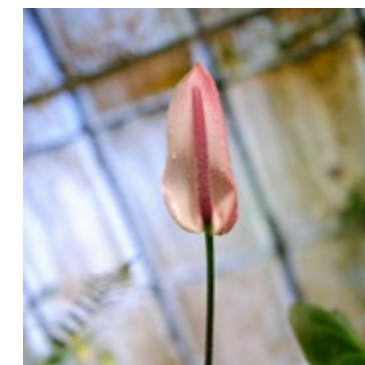
GLASSHOUSE
EDEN

Milliken

Introducing the *Glasshouse Collection*

Inspired by the vibrant life inside a greenhouse, Glasshouse draws from the rich colors of sunlit foliage and blooming plants. Layers of greens, florals, and warm light tones create a dynamic yet balanced palette that brings energy and depth to interior spaces.

Designed with functionality at its core, this modular collection offers flexible solutions—working as a bold full-field statement, defining circulation, or creating seamless transitions between areas. Glasshouse combines expressive color with practical performance, delivering a versatile and contemporary system for spaces that value both creativity and purpose.



GLASHOUSE | © 2026 MILLIKEN & COMPANY



(border) Eden in Exotic, (field) Eden in Trunk, Poppy Seed, Sandstone and Sunflower;
Fast Lane in Sandstone with Gold, On the Tracks Collection, monolithic installation.



(meeting room) Woven Color in Undertone with Sage, Warp & Weft Collection,
(workstation) Eden in Exotic, monolithic installation.



GLAS HOUSE | 2016 MILLIKEN & COMPANY

Eden in Hearts, Clay Pot, Terracotta and Sandstone, monolithic installation.

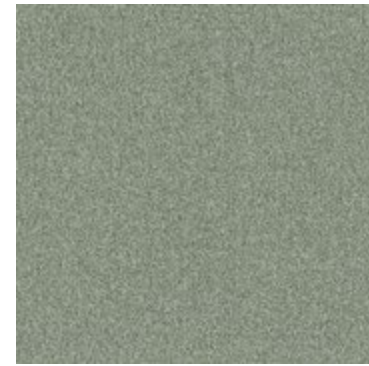
COLORLINE | EDEN



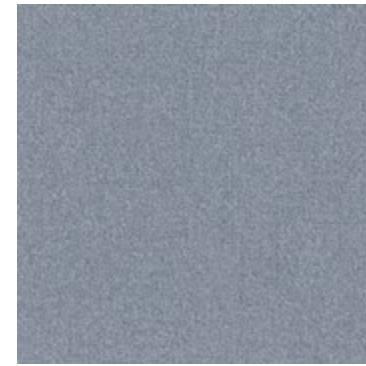
EDN261 Blush



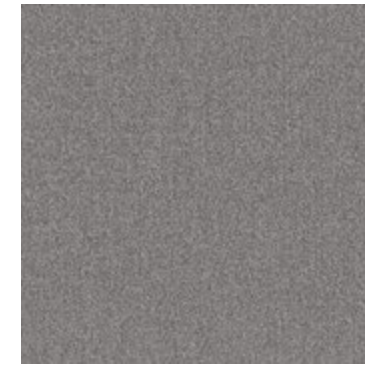
EDN236 Terracotta



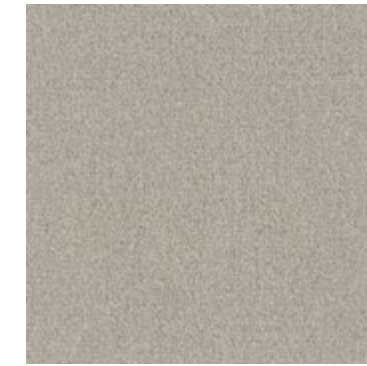
EDN241 Bud



EDN248 Manor Blue



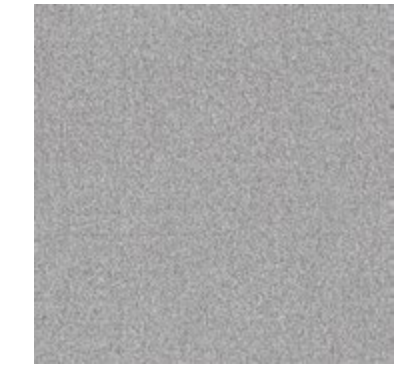
EDN6 Moonshine



EDN208 Sandstone



EDN251 Sunroom



EDN209 Cold Frame



EDN60 Hearts



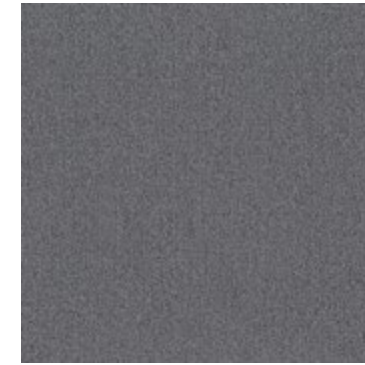
EDN262 Clay Pot



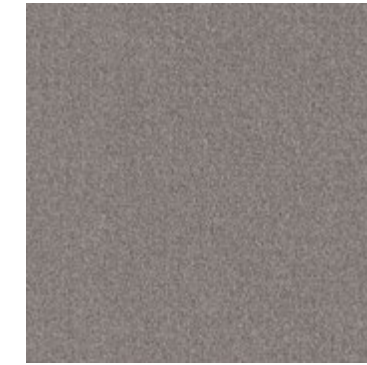
EDN203 Grow



EDN197 Island Blue



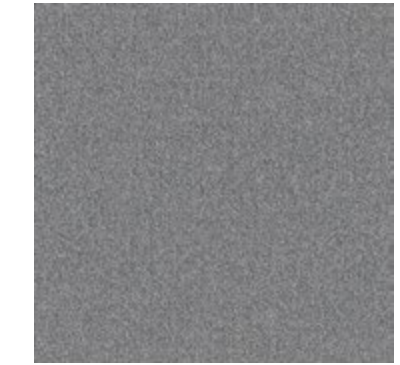
EDN13 Gateway



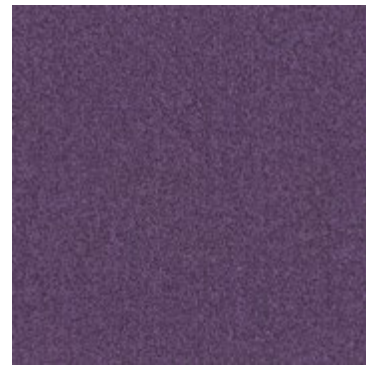
EDN234 Frame



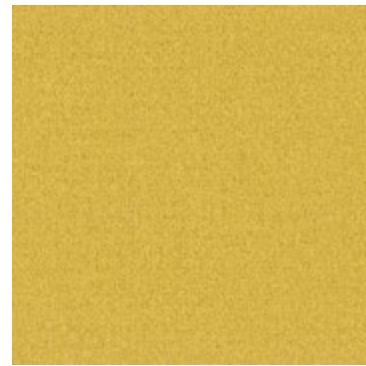
EDN48 Exotic



EDN180 Haven



EDN195 Amethyst



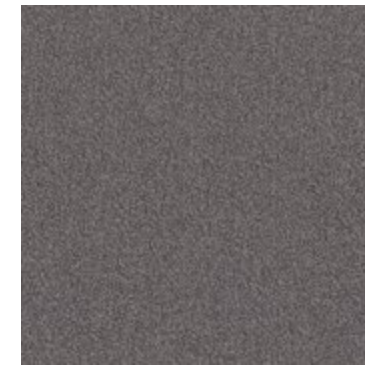
EDN188 Sunflower



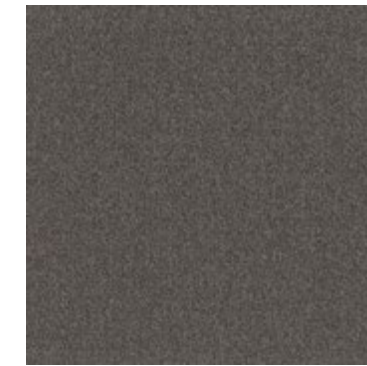
EDN230 Thyme



EDN196 Stardust



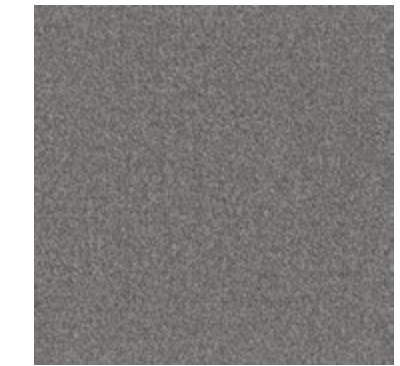
EDN174 Powder Steel



EDN67 Poppy Seed



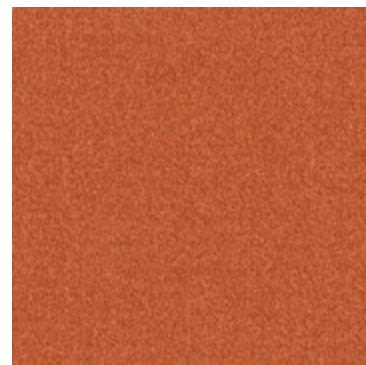
EDN235 Sanctuary



EDN25 Oasis



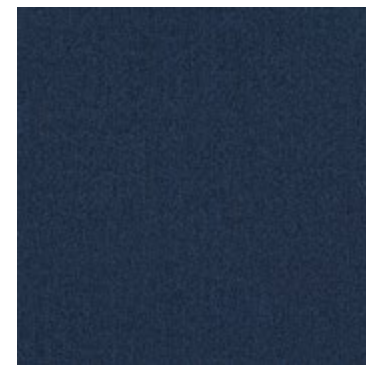
EDN232 Berry



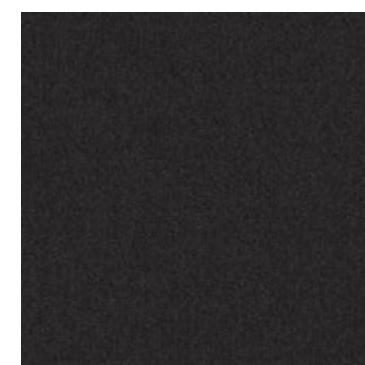
EDN128 Paradise



EDN274 Aventurine



EDN228 Deep Indigo



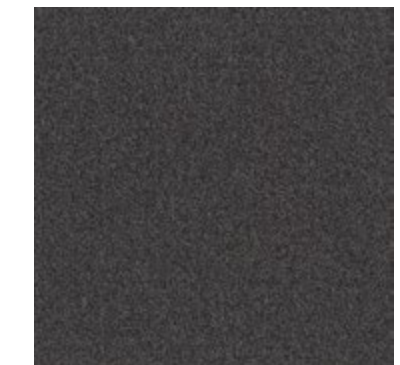
EDN27 Space



EDN133 Dark Bronze



EDN59 Trunk

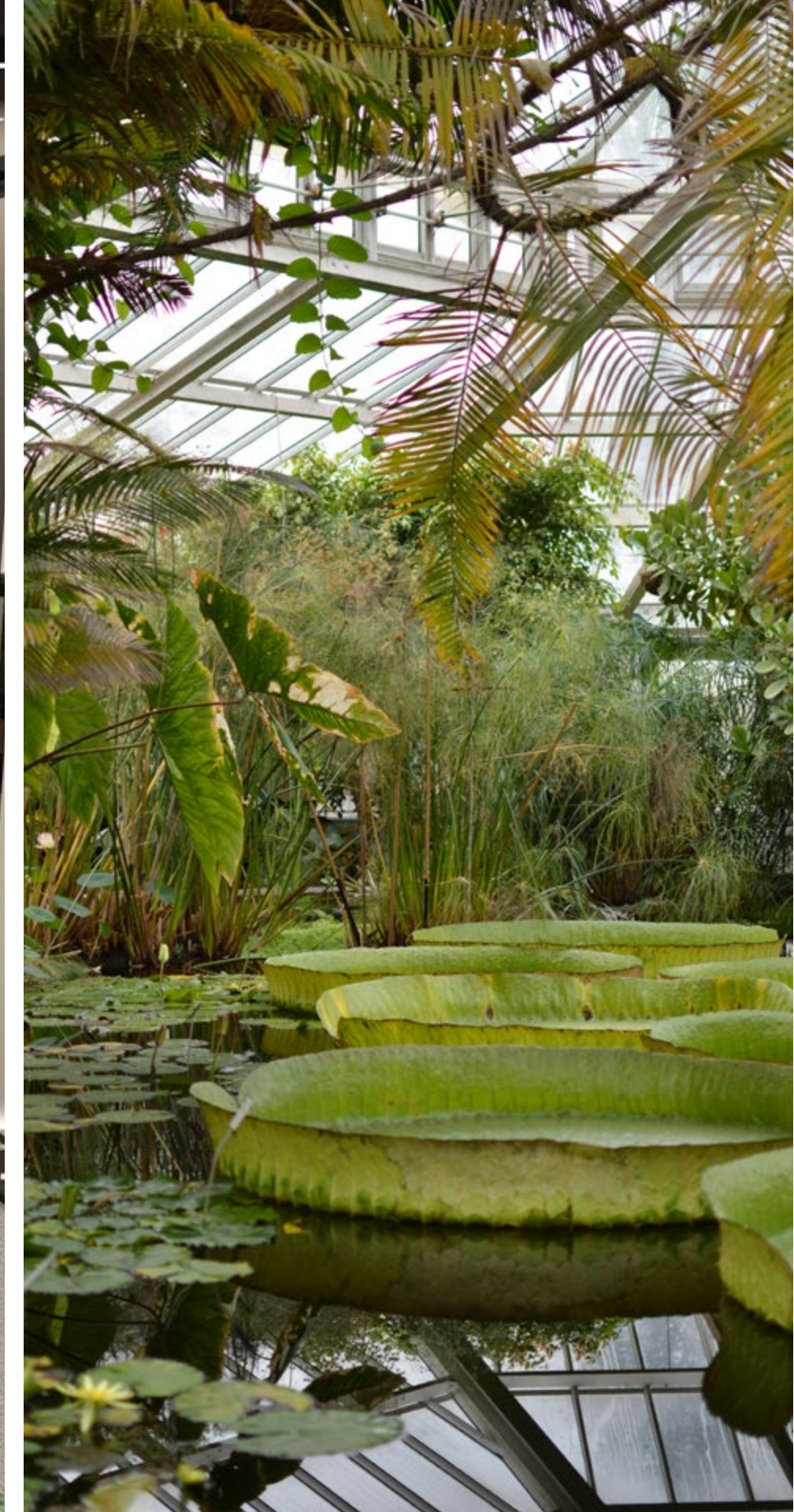


EDN79 Rescue



2026 MILLIKEN & COMPANY

(meeting room) Eden in Clay Pot,
(corridor) Threaded Layer in Baked Beige with Brick, Warp & Weft Collection, monolithic installation.
(coordination area) Raw Wood in Earthy, Repurposed Materials Collection, ashlar installation.



Eden in Exotic, (corridor) Woven Color in Undertone with Sage, Warp & Weft Collection, monolithic installation.

GLASSHOUSE | 4056 MILLIKEN & COMPANY



GLASSHOUSE | © 2026 MILLIKEN & COMPANY

(from left to right) Eden in Grow, Network in Chrome, Screenplay Collection, Eden in Thyme, monolithic installation.



(field) Eden in Aventurine, Space and Moonshine; Frames in Deep Teal, Screenplay Collection.
(workstation and corridor) Eden in Moonshine, monolithic installation



GLASSHOUSE | © 2026 MULLEN + COMPANY

(field) Eden in Exotic, Sanctuary and Amethyst, monolithic installation.
(border) Woven Stone in Fossil, Repurposed Materials Collection, ashlar installation.



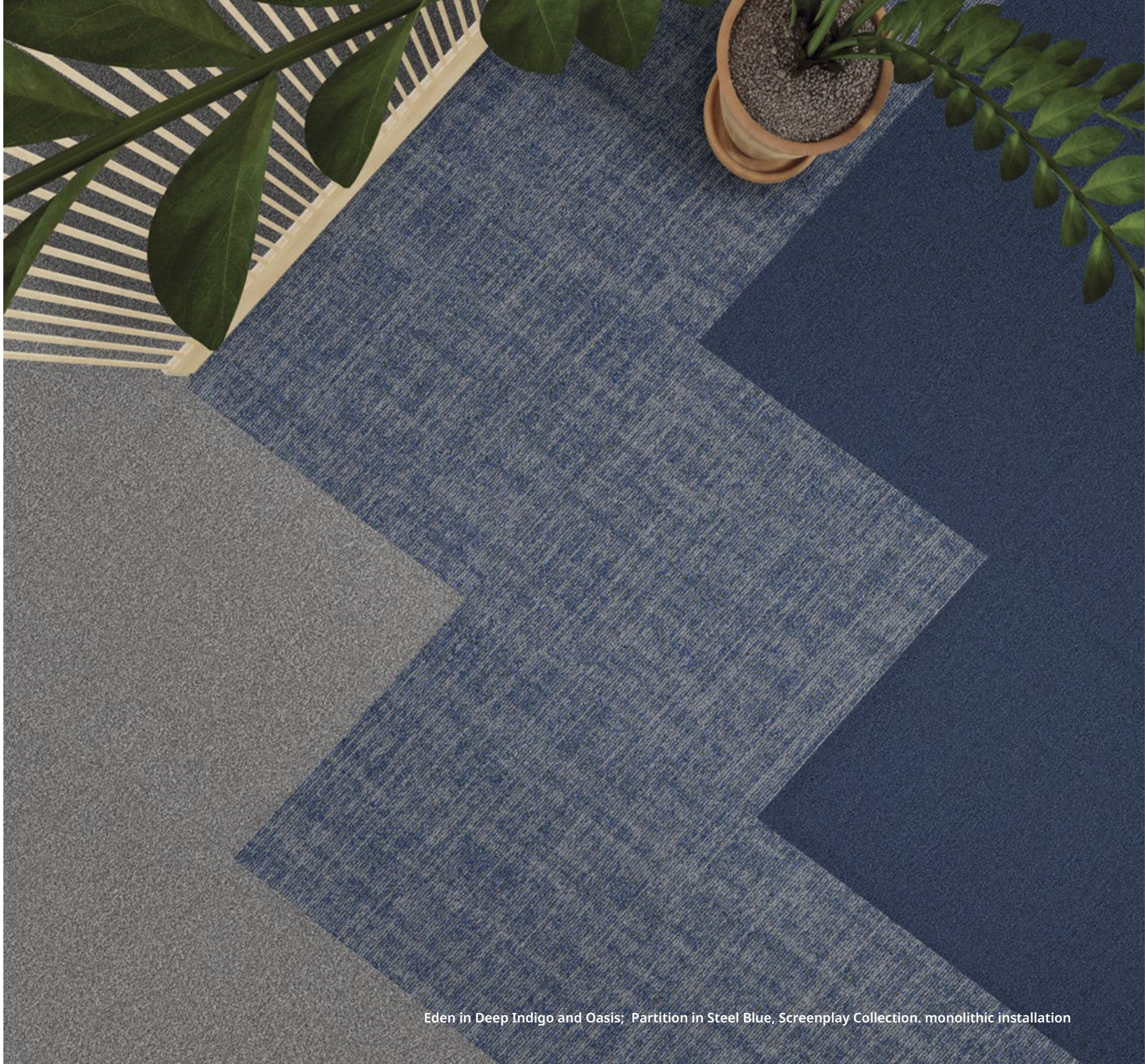


Eden in Stardust, Terracotta, Grow and Manor Blue, monolithic installation



GLASSHOUSE | © SCOTT MILLER & COMPANY

Eden in Paradise and Island Blue, monolithic installation



Eden in Deep Indigo and Oasis; Partition in Steel Blue, Screenplay Collection. monolithic installation

M/PACT™

CARBON OFFSET PROGRAM

Climate change is one of the greatest threats facing humanity.

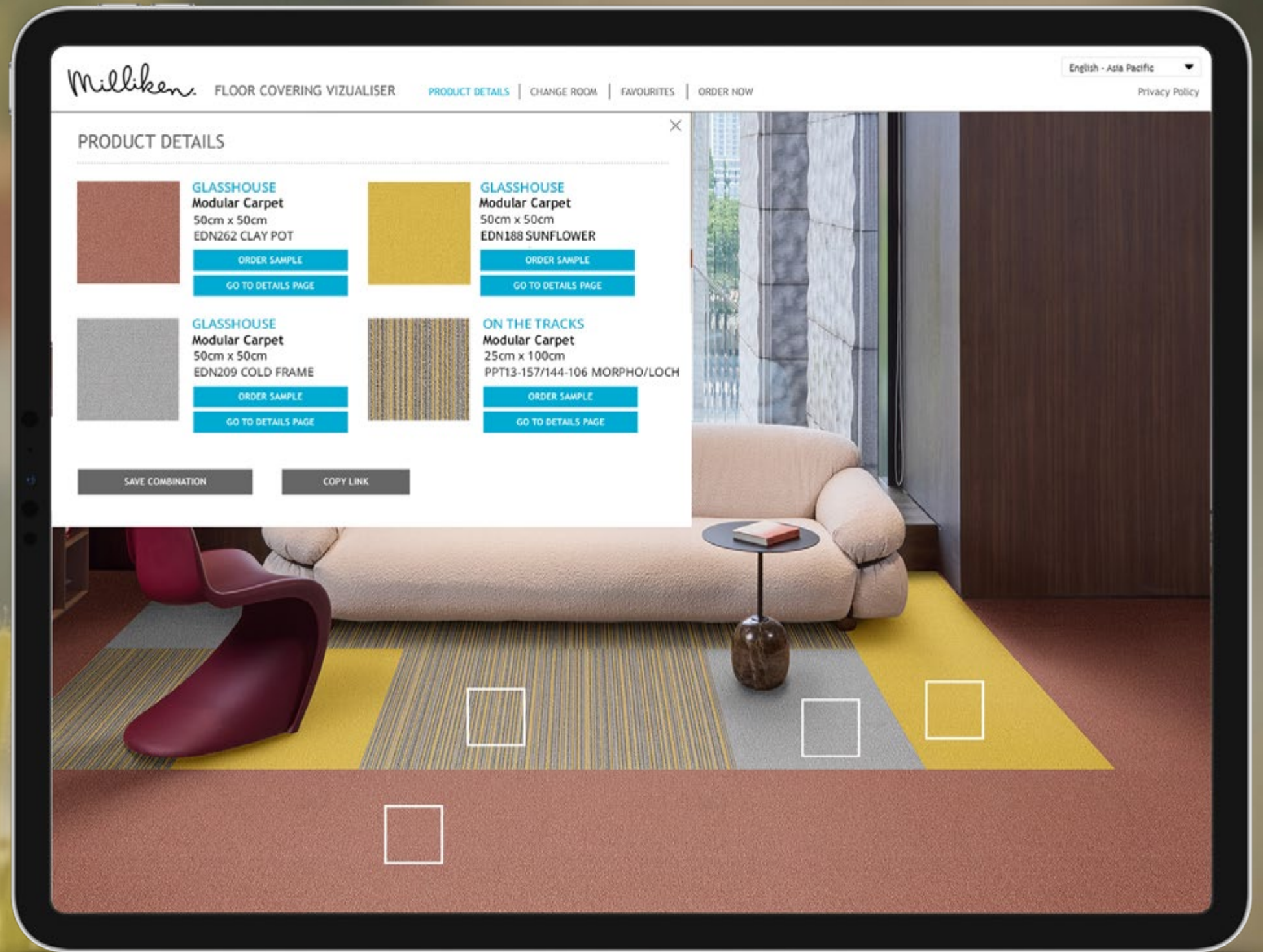
Today, our carpet, LVT and entryway tiles are carbon offset everywhere in the world. We invite you to learn more about the significant changes we've made, then let's work together to design a better future.



Eden in Deep Indigo and Stardust, Partition in Steel Blue, Screenplay Collection.
(corridor) Eden in Oasis, monolithic installation

VIEW GLASSHOUSE IN YOUR SPACE

Use the online visualiser to view different layouts of Glasshouse. Simply upload a photograph of your space and let the visualiser do the rest.





GLASSHOUSE

Eden

SPECIFICATION

Construction - Tufted, Textured Loop

Tile Size - 50cm X 50cm

Face Fiber - 100% Milliken Certified Nylon

Dye Method - Millitron®

Standard Backing - PVC-Free WellBAC® Function
Available with TractionBack®

Nominal Total Thickness - 6.5 mm ±10%

Flammability - ≥ 0.45 (Class I)

Texture Appearance Retention Rating (TARR) - Heavy

Indoor Air Quality - CRI Green Label Plus™ - Pass

技术指标

结构 - 簇绒织造圈绒结构

产品尺寸 - 50厘米 X 50厘米

表层纤维 - 100% 美利肯认证尼龙

染色技术 - Millitron® 数码针染技术

标准底垫 - 不含PVC之 WellBAC® Function (不含PVC)
可选装TractionBack® 免胶

额定总厚度 - 6.5 毫米±10%

阻燃性 - ≥ 0.45 (一级)

外观保持等级 (TARR) - 频繁商业使用

室内空气质量 CRI Green Label Plus™ - 通过

Installation Method

安装方式：



Monolithic Quarter Trun Ashlar V.Ashlar Random

TractionBack®

Simplify your modular installation with Milliken's patented TractionBack®, an innovative backing system that is faster, more cost efficient, and environmentally superior to wet adhesives and peel-and-stick carpet tile.



Follow us on social media:

WeChat Instagram Website