



ECHO FIELD

Milliken™



A BIRD'S EYE VIEW



Inspired by the rhythmic flow of landscapes seen from an airplane window, the Echo Field collection invites you to step into a world where vast landscapes filled with the serenity of nature and organic patterns unfold beneath your feet. With its 2 patterns and 13 colors, Echo Field mirrors the patchwork of colors and textures found in cultivated landscapes filled with the serenity of nature and organic patterns - rows of wheat, rolling pastures, and winding rivers - all blended into a harmonious design.



RESONATE

ACCELERATE YOUR INTERIORS

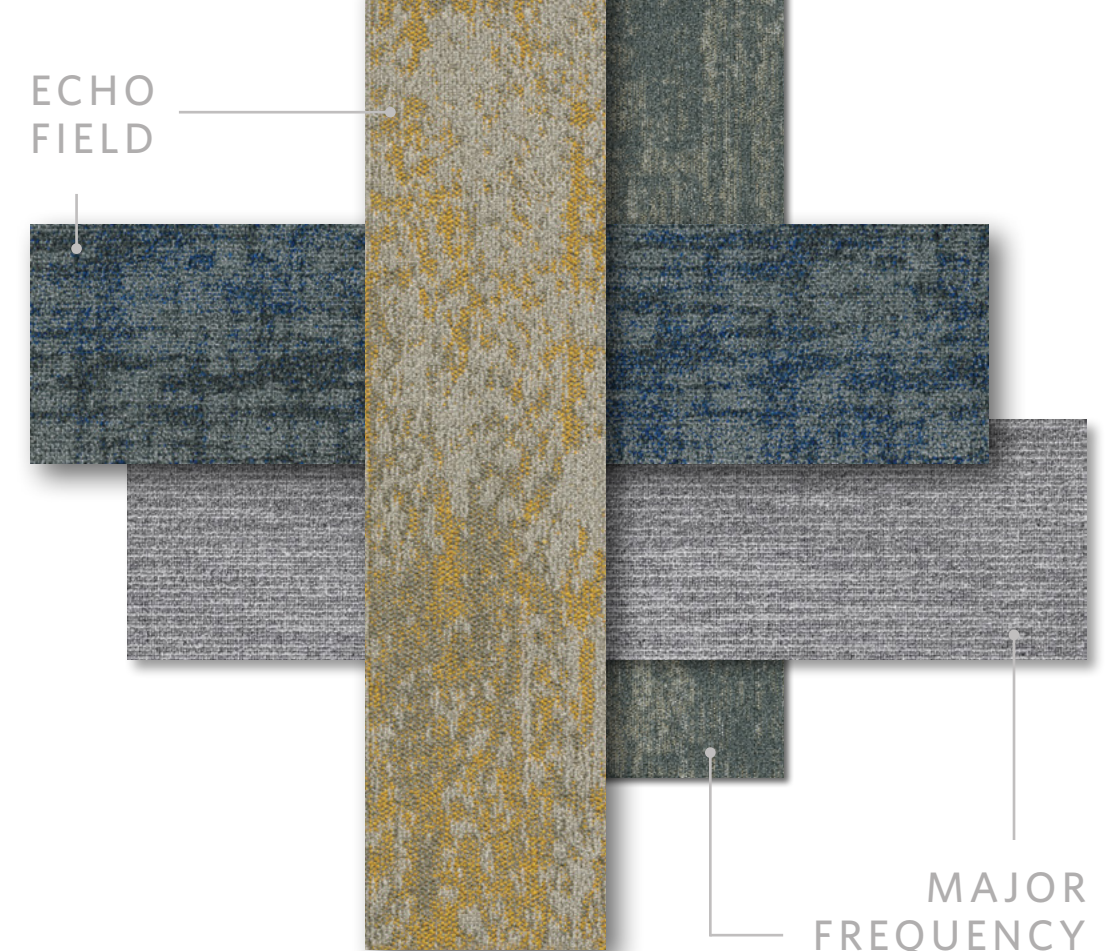
Taking inspiration from sound wave patterns and the rolling hills of America's heartland, two new patterns emerge. Building on the runs from existing collections, these new designs provide on-trend options and design freedom.

RHYTHMIC

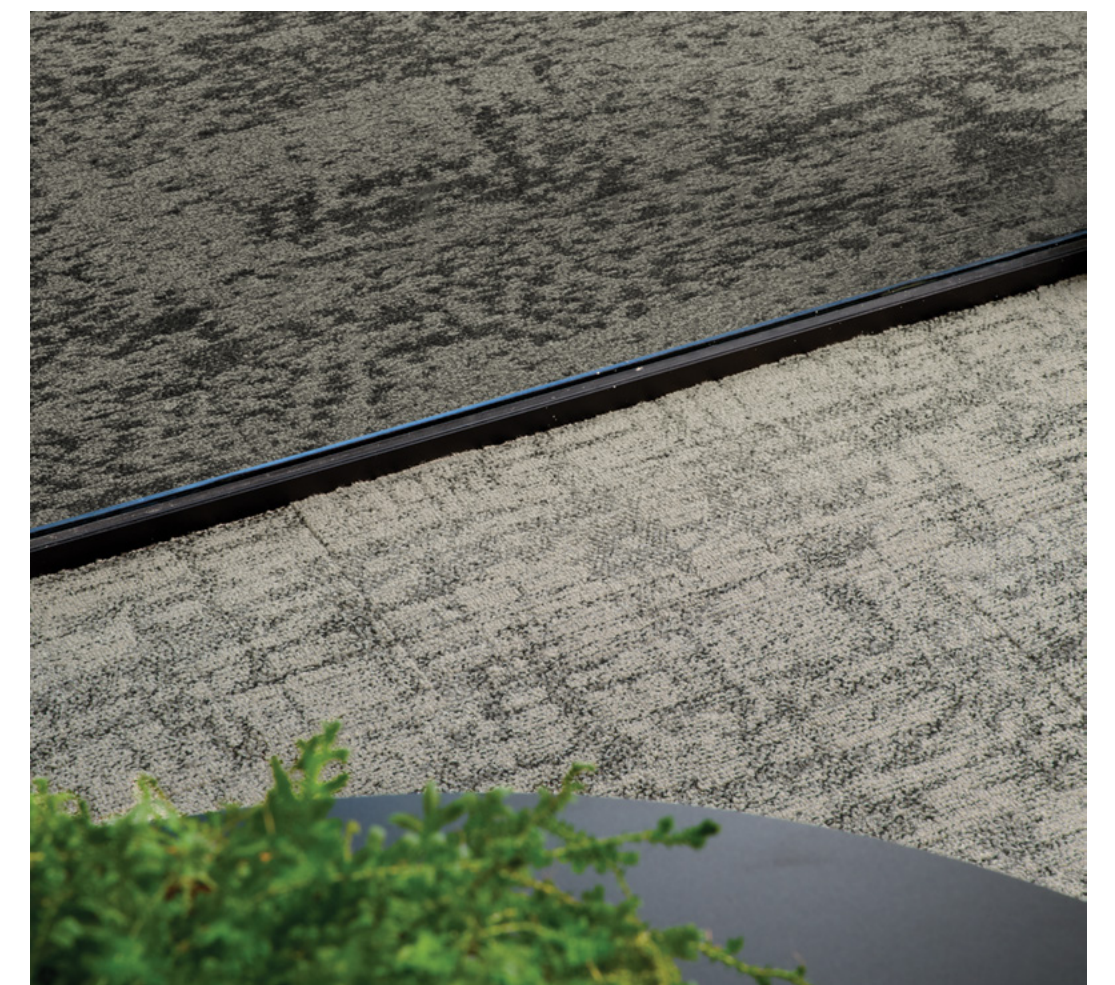


Resonate in Tawny RSN94-48 and Rhythmic in Beige RHY208-217. Ashlar.

ECHO
FIELD



MAJOR
FREQUENCY



HARMONIOUS FOUNDATIONS

Through shared organic textures and soothing neutral tones, Echo Field seamlessly coordinates with our Major Frequency collections, creating a harmonious foundation for any space. Both collections are inspired by naturally-occurring patterns, like soundwaves and landscapes, and their designs blend effortlessly, offering versatile layers of depth and warmth.



Rhythmic in Graphite RHY79-152, Herringbone. Resonate in Beige RSN208-217, Ashlar.

SERENE SPACES

Just as the land tells a story of time and care, the Echo Field collection brings a sense of tranquility and connection into your space. Constructed with our WellBAC® comfort cushion backing, this collection offers superior noise absorption helping create a quieter, more comfortable environment.



Rhythmic in Graphite RHY79-152, Herringbone. Resonate in Beige RSN208-217, Ashlar.

With Milliken, moisture management is seamless. Our innovative open-cell carpet backing allows floors to breathe, helping moisture to evaporate naturally. This cost-effective solution eliminates the need for surface primers during installation, reducing both time and material costs while providing long-term protection against moisture buildup.



Rhythmic in Ash RHY27-52. Vertical Ashlar.

Milliken's carpet and resilient flooring solutions are engineered for high-traffic areas, maintaining their beauty and resilience where others fall short. Our carpets lead the industry with a Lifetime Warranty, while our resilient advanced 22mil wear layer ensures best-in-class protection against scuffs, stains, and scratches. Our flooring delivers the lasting durability you can trust.

COLOR LINE IN RESONATE



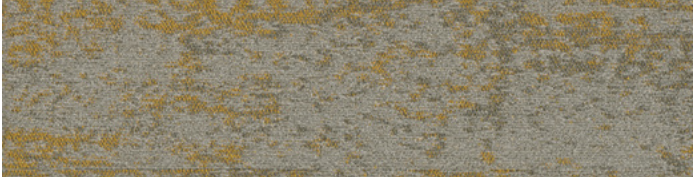
Tan RSN120-144



Warn Stone RSN27-217



Camel RSN145-212



Wheat RSN105-144



Smoke RSN218-106



Ash RSN27-152



Slate RSN118-152



Beige RSN208-217



Tawny RSN94-48



Umber RSN94-27



Fog RSN209-118



Graphite RSN79-152



Charcoal RSN27-118

COLOR LINE IN RHYTHMIC



Beige RHY208-217



Camel RHY145-212



Wheat RHY105-144



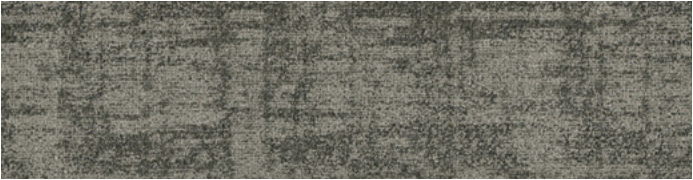
Smoke RHY218-106



Ash RHY27-152



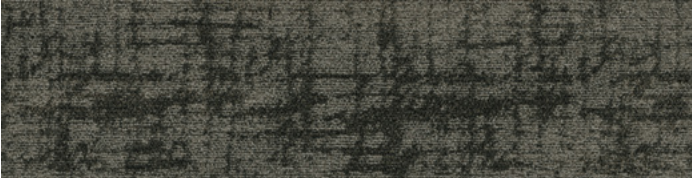
Slate RHY118-152



Tan RHY120-144



Warn Stone RHY27-217



Tawny RHY94-48



Umber RHY94-27



Fog RHY209-118



Graphite RHY79-152



Charcoal RHY27-118



Milliken™ FOR HUMANKIND.



Scan to learn more about our
commitment to sustainability.

RED LIST FREE

Healthy materials are the foundation for effective circularity, reducing community pollution and cleaner living for all.

- The Living Building Challenge Red List contains the “worst in class” materials, chemicals and elements known to pose serious risks to human health and the greater ecosystem.
- Red List Free certification is the absence of Red List chemicals in building and home furnishings.
- Our products have been completely vetted and verified to contain no Red List Chemicals at levels at or above 100 ppm or 0.01 percent.
- Affords superior recycling potential of clean-based products.

Achieving LBC Red List Free is a commitment to significantly cut down on the output and use of harmful chemicals. It reflects our company’s prioritization on human health and ensuring a brighter future for generations to come.

M/PACT™ Carbon Neutral Product

Climate change is one of the greatest threats facing humanity. That’s why our modular flooring products are carbon neutral everywhere in the world. Let’s work together for a better tomorrow.

Sustainable features

Echo Field is manufactured with PVC-Free WellBAC® Comfort cushion backing, and is certified NSF-140 Gold. Made in the USA, **Echo Field** is also available with our NSF-140 Platinum backing option. All Milliken modular carpets carry Environmental Product Declarations and Health Product Declarations, which contribute to LEED certification. Additionally, Milliken modular carpets carry Declare® transparency labels and comply with the Red List Imperative of the Living Building Challenge.™



M/PACT™ CARBON NEUTRAL PROGRAM



ECHO FIELD

Resonate / Rhythmic

Construction

Tufted, Textured Loop

Tile Size

25 cm x 1 m
(9.84" x 39.4")

Yarn Type

Universal Fibers®
Solution-Dyed Nylon

Stain Resist / Soil Release

StainSmart®

Nominal Total Thickness

0.32" (8.12 mm)

Average Density (Finished)

Resonate: 6,200
Rhythmic: 6,400

Standard Backing

PVC-Free WellBAC®
Comfort Cushion

Texture Appearance

Retention Rating (TARR)
Severe

Recommended Installation Method(s)



ALL PLANK
METHODS

SUSTAINABLE FEATURES

Echo Field is manufactured with PVC-Free WellBAC® Comfort cushion backing, and is certified NSF-140 Gold. **Echo Field** is also available with our NSF-140 Platinum backing option.



Declare.

M/PACT™ CARBON NEUTRAL PROGRAM

M/PACT carbon neutral products offset the raw materials and manufacturing carbon footprint* by using 3rd party Verified Carbon Standard Credits that support renewable energy and carbon reduction technologies to help fight climate change. When you choose M/PACT products, you can be sure your choice is carbon neutral.

SHOWN ON THE COVER

(Front) Resonate in Beige RSN208-217. Vertical Ashlar.
(Back) Rhythmic in Tan RHY120-144. Vertical Ashlar.

*As calculated and verified scope A1-3 GWP through a ISO14025/ISO14040 compliant LCA and published in third party EPDs.

Images in this brochure and architect folder are approximate for color and pattern scale. Please use actual carpet samples to make your final selections.

Milliken™

Customer Concierge 800.824.2246 | millikenfloors.com
© 2025 Milliken & Company | Design © Milliken & Company | Made in the USA

Scan to explore the
collection story.



2710037534
CP 0325