



**RENASCI™**

Milliken™





Milliken™

# RENASCI™

**DAY ONE OF A TRULY CIRCULAR FUTURE.**

**CRAFTED FROM 80% CARPET WASTE  
AND 20% SOFT PLASTIC WASTE.**

**N/XT LIFE™**  
CIRCULARITY PROGRAM



# RENASCI™

*Latin: To be born again*

In a world overwhelmed by waste, a bold idea emerged to take what's discarded and turn it into something meaningful. Construction and demolition waste is the largest waste stream in Australia and New Zealand, making up over 39% of the total waste.

In 2024 alone, an estimated 36 million tonnes of this waste was generated. Carpet contributed a staggering 11% of the country's textile, leather, and rubber waste with approximately 90,000 tonnes annually ending up in landfill, where it stays for generations.

The problem is clear: synthetic carpets made from nylon, polyester, and polypropylene are built to last - but not to last well. Their durability in homes and commercial spaces comes with a cost to the planet. But what if lasting could also mean lasting impact?

Milliken took this challenge head-on.

Through our N/XT Life™ Circularity Program, we reimagined flooring from the ground up, considering every material, every process, every decision. The goal: to transform carpet waste and soft plastic waste into something new, useful, and truly sustainable. The result is Renasci™\*, a resilient flooring innovation born from intention and designed for circularity.

Made from 80% carpet waste and 20% soft plastic waste, Renasci™\* doesn't just reduce landfill, it redefines possibility. With low embodied carbon, high performance, and full recyclability, it's not just flooring. It's DAY ONE of a closed-loop future. A lighter footprint. A cleaner path forward. And a powerful reminder that from waste, something remarkable can be born again.

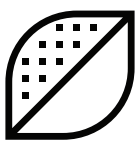
\*Renasci™ – Patent Pending

## What if ONE solution could close the loop and fix the carpet waste and soft plastic waste crisis?



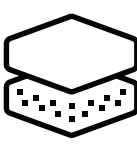
### WASTE. REINCARNATED.

Born of 80% carpet waste and 20% soft plastic waste, Renasci gives waste another life.



### LIGHTER FOOTPRINT.

Renasci closes the loop right here in Australia and New Zealand —resulting in low embodied carbon.



### BORN AGAIN. BY DESIGN.

Because of our N/XT Life™ Circularity Program, every Milliken carpet can live again as Renasci — completing the cycle for good.











Renasci™ In Nero | REN27 | Half-Drop Ashlar Installation

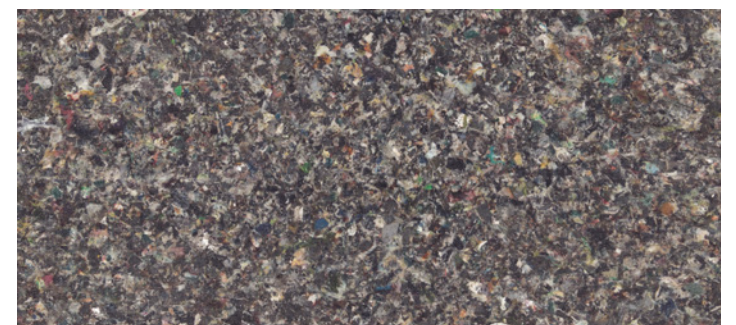


## “INNOVATION AT HEART. SUSTAINABILITY IN MIND. BEAUTY IN EVERY SPACE.”

Renasci™ is a resilient flooring innovation designed for circularity, where recycled materials meet refined aesthetics. Crafted with intention and purpose, Renasci™ transforms waste into a sophisticated Dark Grey finish, offering a flooring system that unites durability, sustainability, and elevated design. The result is a bold visual statement that speaks to both innovation and environmental responsibility.

### COLOURWAY

NERO | REN27 | PLANK SIZE 50cm x 1m





Milliken

# N/XT LIFE™

## CIRCULARITY PROGRAM

N/XT LIFE™ CIRCULARITY PROGRAM SETS THE FOUNDATION FOR A TRULY CIRCULAR FUTURE.  
**FROM DAY ONE.**



### CLOSED-LOOP RECYCLING. FROM DAY ONE.

All our carpets are 100% recyclable locally in Australia and New Zealand.



### NOTHING LEFT BEHIND. FROM DAY ONE.

Zero carpet waste to landfill. Every off-cut, every scrap — recycled and reborn, through N/XT Life™ Circularity Program.



### DESIGNED TO RETURN. FROM DAY ONE.

All our carpets are free of any chemicals of concern and certified Declare Red List Free - designed to live again and again.



Renasci™ in Nero | REN27 | Half-Drop Ashlar Installation



# RENASCI™

## RESILIENT FLOORING

### SPECIFICATION

#### Milliken N/XT LIFE™ Flooring System (PVC-FREE)

**Construction**  
Mixed Polymers

**Finish**  
Integrated Polyurethane

**Wear Layer Thickness**  
0.50mm

**Tile Size**  
50 cm x 100 cm

**Overall Thickness (Nominal)**  
6.5 mm (±0.3 mm)

**Recyclable**  
100%

**Pieces Per Box**  
6 pieces

**Weight Per Box**  
26.5kg

**Quantity Per Box**  
3.00 m<sup>2</sup>

**Critical Radiant Flux (AS ISO 9239-1)**  
2.9 kW/m<sup>2</sup>

**Smoke Rate (AS ISO 9239-1)**  
597%.min

**Slip Resistance Classification**  
P3 & R10

**Scratch Resistance (0.6Kg mass) (ISO 1518.1 – Part A)**  
No Scratch

**Determination of Dimensional Stability & Curling after Exposure to Heat (ISO 23999)**  
≤0.25%;  
Curl ≤ 2mm

**Castor Chair Resistance (ISO 4918, 5000 cycles)**  
PASS

**Total VOC Emissions (ISO 10580)**  
≤0.30 (mg/m<sup>2</sup>/h)

**Recommended Installation Method(s):**  
Glue Down Only —  
Half-Drop Ashlar  
Random Ashlar  
Herringbone

**Recommended Area of Use:**  
Commercial | Residential

**Warranties:**  
10-year Limited  
Commercial Wear  
Warranty

## RENASCI™

Made from 80% carpet waste and 20% soft plastic waste, Renasci\* doesn't just reduce landfill, it redefines possibility. With low embodied carbon, high performance, and full recyclability, it's not just flooring. It's **DAY ONE** of a closed-loop future. A lighter footprint. A cleaner path forward. And a powerful reminder that from waste, something remarkable can be born again.

Renasci\* - patent pending

## N/XT LIFE™

### CIRCULARITY PROGRAM

N/XT Life™ Circularity Program emphasizes material circularity and environmental responsibility in flooring design. By focusing on reducing, reusing, and recycling through strategic partnerships, the N/XT Life™ Circularity Program gives flooring a second life. With the use of Red List Free materials, prioritisation of recycled yarn, and the innovative ways Milliken looks to extend carpet life - we hope to create a positive impact on the world around us.

### CUSTOMER SERVICE

Australia:  
Toll Free: 1800 668 372

New Zealand:  
Toll Free: 0800 668 372

[www.millikenfloors.com.au](http://www.millikenfloors.com.au)  
(Australia & New Zealand)

Images in this brochure are approximate for colour and pattern scale. Please use actual samples to make your final selections.

**Cover Image:** Renasci™ in Nero  
NER27 | Half-Drop Ashlar Installation

© 2025 Milliken & Company | Design © Milliken & Company

Milliken

Renasci™ in Nero | REN27  
Half-Drop Ashlar Installation