



**LUMENOLOGY**  
FLEXFORM LVT™

Milliken™



# LUMENOLOGY

PART OF THE **CRAFTED IN AMERICA** SERIES

---

We believe institutional spaces can be bright, welcoming environments with the simple introduction of color, texture and pattern to the flooring design. Lumenology resilient flooring allows you bring light and energy into any space with its diverse color palette. Part of the Crafted in America series, Lumenology resilient products are also domestically made to ensure reliable, timely delivery.







Light Wash in Lustering LWE257. Ashlar.

## A COLLECTION OF **LIGHT, COLOR & TEXTURE**

With anchoring neutrals, harmonizing textures, and inspiring color, Lumenology resilient allows you to reimagine how spaces are defined. Create endless expressions of color coordination with our Reflective, Light Wash, and Light Stitch pattern options.







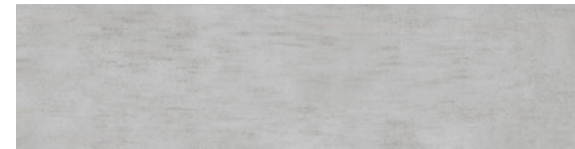


# DESIGNED TO COORDINATE

Designed to work as a kit, the Lumenology Collection offers a wide spectrum of pre-built color sets. From education to healthcare and beyond, explore endless variations with a flexibility that can go anywhere your imagination takes you.

## LIGHT STITCH

25 cm x 1 m planks



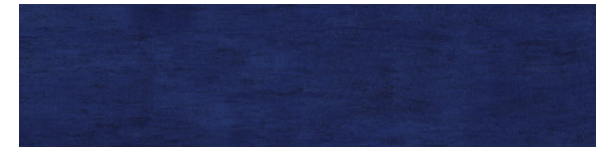
**Translucent** LSE257



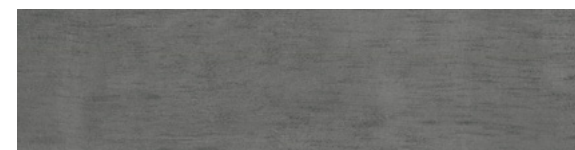
**Lambda** LSE199



**Reveal** LSE144



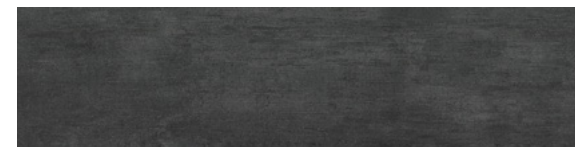
**Frequency** LSE123



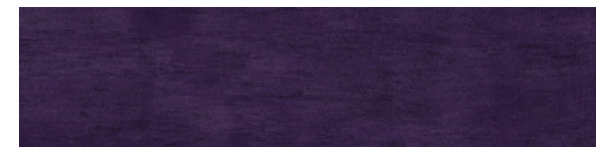
**Dim** LSE13



**Transmit** LSE258



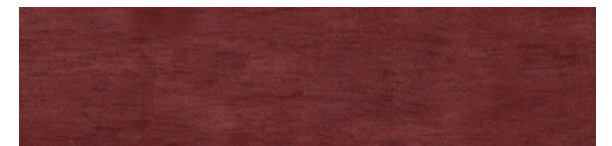
**Aspect** LSE154



**Ultra Violet** LSE232



**Infrared** LSE191



**Photon** LSE109



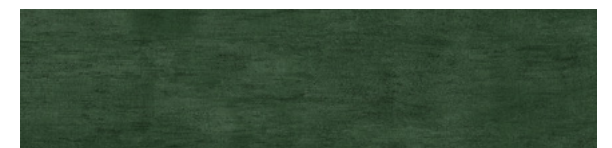
**Sunlit** LSE289



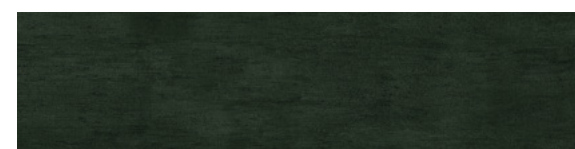
**Array** LSE231



**Vector** LSE266



**Linear** LSE202



**Momentum** LSE230



LIGHT WASH \_\_\_\_\_ 25 cm x 1 m planks



Lustering LWE257



Spotlight LWE265



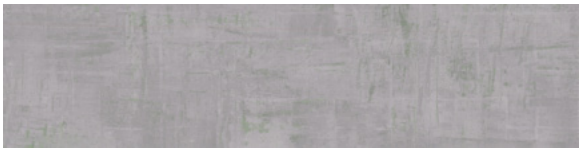
Candent LWE190



Lucent LWE265-189



Vision LWE203



Opaque LWE265-203



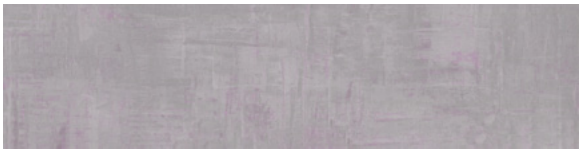
Flicker LWE126



Light LWE265-126



Shade LWE154



Opalescent LWE265-195



Light Wash in Lustering LWE257. Ashlar.

REFLECTIVE \_\_\_\_\_ 25 cm x 1 m planks



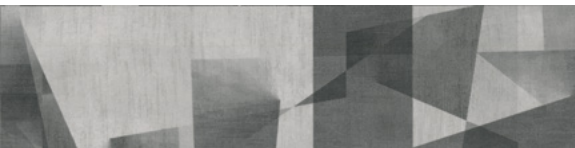
Refract RFE144



Shaft RFE13-12



Iridescent RFE6-126



Deflect RFE6



Light Wash in Opaque LWE265-203 and Light Stitch in Momentum LSE230.



# LUMENOLOGY



# FLEXFORM™

VALUE-ENGINEERED  
HARD FLOORING

## Art, backed by science.

Milliken's resilient flooring collections create new options for commercial, hospitality, education and retail interiors. Easily coordinate between LVT and Milliken's extensive carpet offerings – designed to work together.

### PROGUARD™ REINFORCED POLYURETHANE COATING

Integrated surface technology provides best in class scratch and stain resistance, eliminates the need for additional finishes or harsh chemical treatments.

### WEAR LAYER

Heavy commercial grade transparent wear layer protects the print visuals and ensures product performs in heavy foot traffic.

### PRINTED LAYER

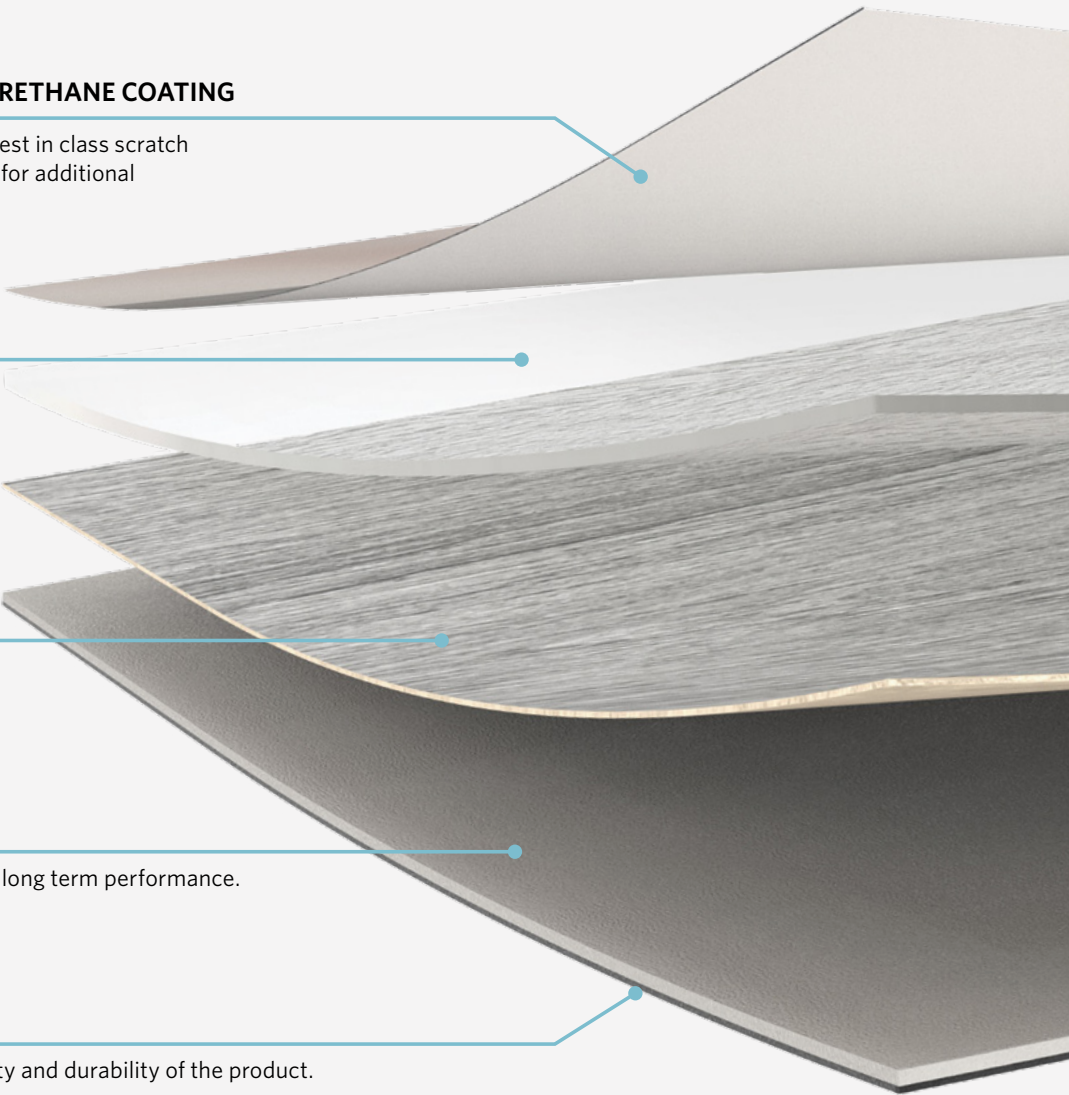
State of the art printing technology providing authentic visuals and designs.

### HIGH PERFORMANCE CORE LAYER

Ensures excellent durability, stability and long term performance.

### BACKING LAYER

Engineered balance layer provides stability and durability of the product.





# Milliken™ FOR HUMANKIND.



Scan to learn more about our  
commitment to sustainability.

## M/PACT™ Carbon Neutral Product

Climate change is one of the greatest threats facing humanity. That's why our modular flooring products are carbon neutral everywhere in the world. Let's work together for a better tomorrow.

## Sustainable features

Milliken LVT is durable resilient flooring engineered with the highest quality raw materials to provide unsurpassed performance and enduring aesthetics.



**Declare.**

**M/PACT™**  
CARBON NEUTRAL PROGRAM



# LUMENOLOGY

FLEXFORM™ LVT

## Light Stitch / Light Wash / Reflective

Available in 2.5 mm and 5.0 mm planks.

### Construction

High Performance  
Luxury Vinyl Tile

### Finish

2.5 mm: ProGuard™  
5.0 mm: ProGuard MAX™

### Wear Layer Thickness

22 mil (0.55 mm)

### Overall Thickness

2.5 mm: (0.098")  
5.0 mm: (0.197")

### Edge Profile

Square

### Installation

Glue Down

### Nominal Size

9.84" x 39.37"  
(25 cm x 100 cm)

### Pieces Per Box

2.5 mm: 16  
5.0 mm: 8

### Weight Per Box

2.5 mm: 37.6 lb (17.06 kg)  
5.0 mm: 37.21 lb (16.88 kg)

### Quantity Per Box

2.5 mm: 42.9 ft² (3.99 m²)  
5.0 mm: 21.5 ft² (2.0 m²)

### Warranties

22 Year Limited  
Commercial Wear

1 Year Manufacturing  
Defect Warranty

### Recommended

Installation Method(s)



ASHLAR



RANDOM



HERRINGBONE

### SUSTAINABLE FEATURES

Milliken LVT is durable resilient flooring engineered with the highest quality raw materials to provide unsurpassed performance and enduring aesthetics.



**Declare.**

**M/PACT™**  
CARBON NEUTRAL PROGRAM

### SHOWN ON THE COVER

(Front) Light Stitch in Frequency LSE123 and Dim LSE13. Random Ashlar. (Back) Light Stitch in Dim LSE13 and Reflective in Deflect RFE6. Ashlar.

Scan to explore  
the collection story.



Images in this brochure are approximate for color and pattern scale. Please use actual samples to make your final selections.

Milliken™

Customer Concierge 800.824.2246 | millikenfloors.com  
© 2025 Milliken & Company | Design © Milliken & Company | Made in the USA

2710037050  
CP 1124